

HD IP CAMERA

Quick Start Guide



This manual may contain some incorrect places, even though it was published with our carefully proofreading. The news updates will be added to the next release without notice. Your valuable advice is really appreciated.

Table of Contents

Chapter1 System Requirement.....	- 3 -
Chapter 2 Network Connection.....	- 4 -
2.1 Setting the Network Camera over the LAN.....	- 4 -
2.2 Wiring over the LAN.....	- 4 -
Connecting via a Router or a Switch.....	- 5 -
Chapter 3 Access to the Network Camera.....	- 6 -
3.1 Accessing by Web Browsers.....	- 6 -
3.2 Web login.....	- 9 -
Chapter 4 Camera General Configurations.....	- 11 -
4.1 Configuring Image Settings.....	- 11 -
4.2 Modify the camera “Title name”.....	- 12 -
4.3 Privacy Mask function settings.....	- 12 -
4.4 Video parameter settings.....	- 13 -
4.5 Audio settings.....	- 13 -
4.6 TCP/IP settings.....	- 14 -
4.7 Service Ports function settings.....	- 14 -
4.8 P2P function settings.....	- 15 -
4.9 SMTP (Email) function settings.....	- 18 -
4.10 FTP function settings.....	- 19 -
4.11 Enable Motion Detection Alarm.....	- 20 -
4.12 Enable Intelligent Detect Alarm.....	- 21 -
4.13 Storage Setting.....	- 22 -
4.14 Users Manage Modify Password.....	- 23 -
4.15 Device Language.....	- 23 -
4.16 Modify the camera “Time & Date”.....	- 24 -
4.17 Factory Reset.....	- 24 -
4.18 Version firmware upgrade.....	- 25 -
4.19 Camera Connection to NVR.....	- 25 -
Chapter 5 Frequently Asked Questions.....	- 26 -
5.1 Why can’t I open the default IP address 192.168.1.110 via web browser ?- 26 -	- 26 -
5.2 How to reset the password ?.....	- 26 -
5.3 How to upgrade the IP camera ?.....	- 27 -
5.4 How to fetch the RTSP video stream and http snapshot ?.....	- 27 -
5.5 Why does the NVR not show image after adding your IP camera ?.....	- 27 -
5.6 How to make the NVR record in motion detection mode ?.....	- 28 -

Chapter1 System Requirement

Operating System

Microsoft Windows XP SP1/7/8/10

CPU

3.0 GHz or higher

RAM

4G or higher

Display

1024×768 resolution or higher

Web Browser

For camera that supports plug-in free live view

Internet Explorer 8 – 11, Mozilla Firefox 30.0 and above version and Google Chrome 41.0 and above version.

Note:

For Google Chrome 45 and its above version or Mozilla Firefox 52 and its above version which are plug-in free, **Picture** and **Playback** functions are hidden.

To use mentioned functions via web browser, change to their lower version, or change to Internet Explorer 8.0 and above version.

Chapter 2 Network Connection

2.1 Setting the Network Camera over the LAN

Purpose:

To view and configure the camera via a LAN, you need to connect the network camera in the same subnet with your computer, and install the **AjDevTools** or **SADP** software to search and change the IP of the network camera.

Tools: <http://ourdownload.store/>

AjDevTools: [Download](#)

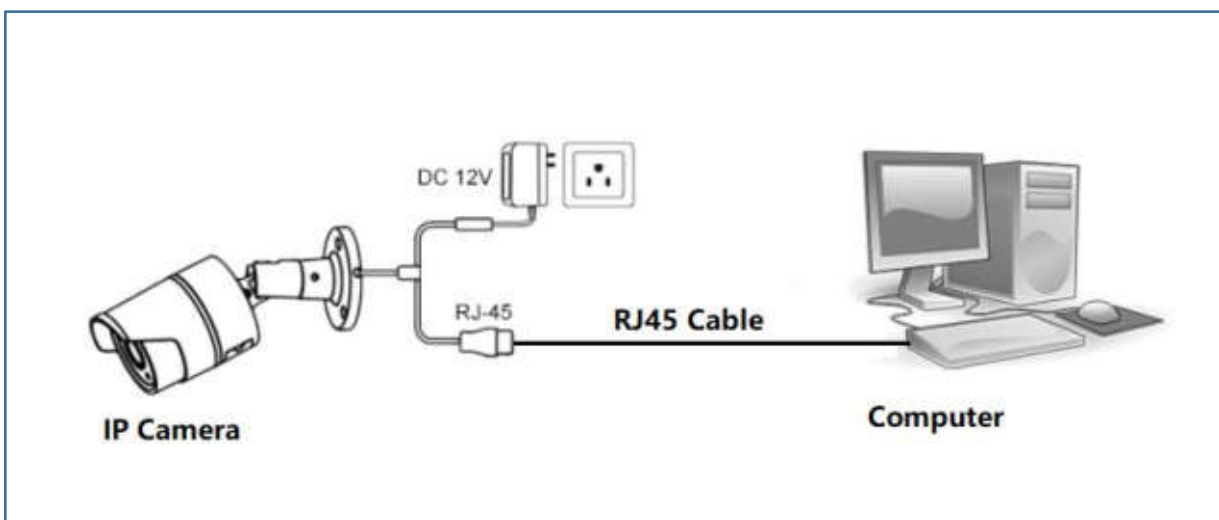
SADP: [Download](#)

2.2 Wiring over the LAN

The following figures show the two ways of cable connection of a network camera and a computer:

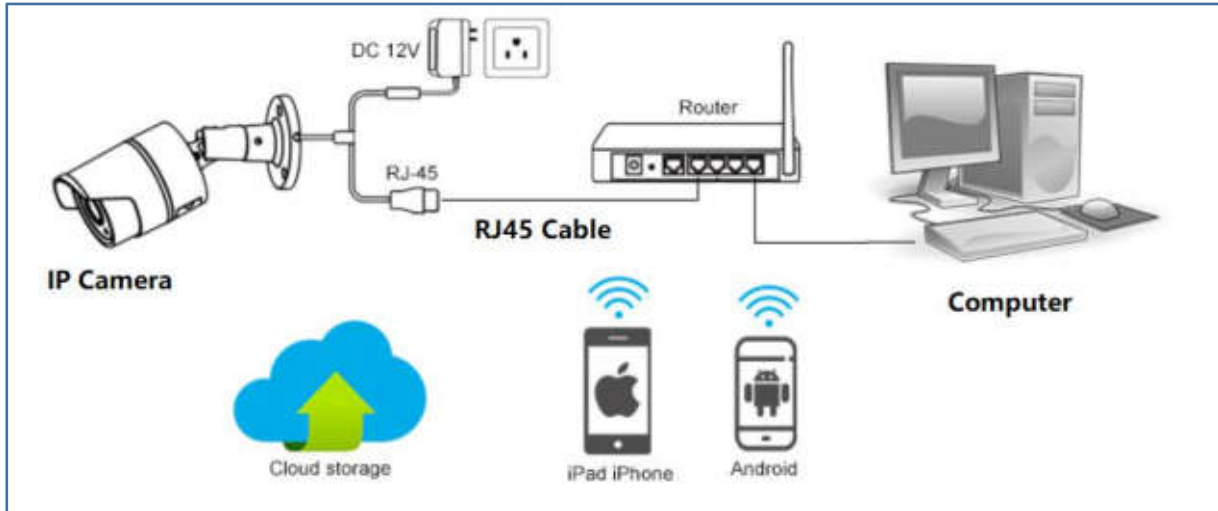
Purpose:

- ① To test the network camera, you can directly connect the network camera to the computer with a network cable. (Connecting directly must supply the camera with DC 12V power supply)



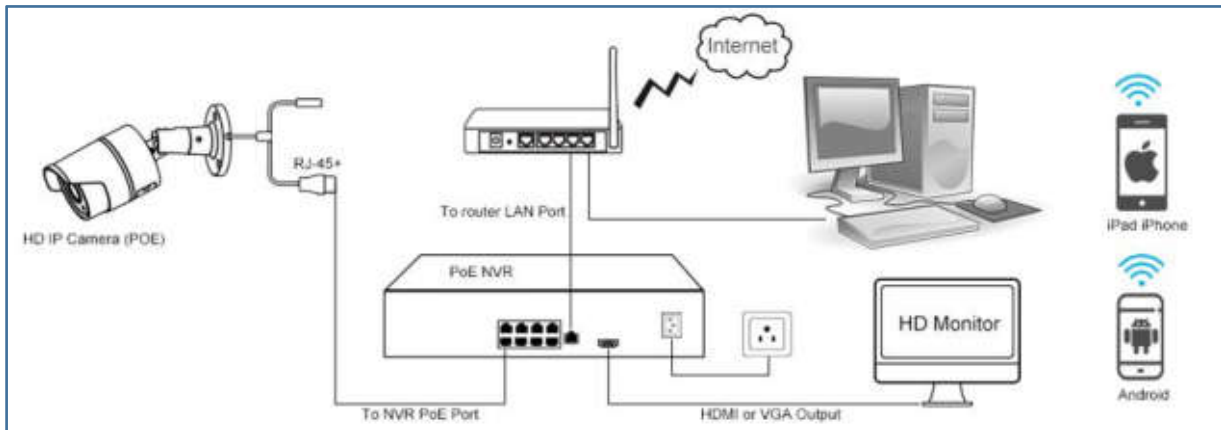
Connecting Directly

- ② Set network camera over the LAN via a switch or a router. (If it is a POE switch, you do not need to power the camera).

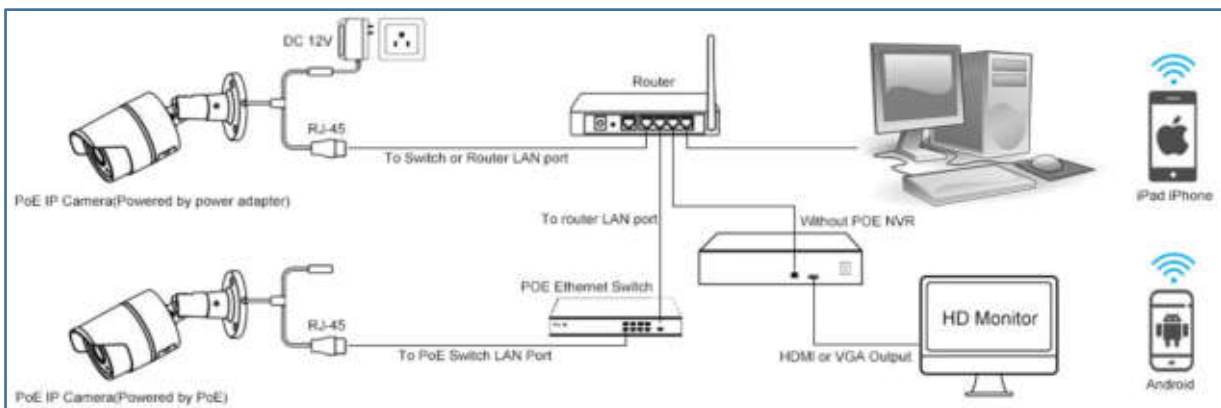


Connecting via a Router or a Switch

- ③ Connect cameras to NVR.



NVR with POE



NVR without POE

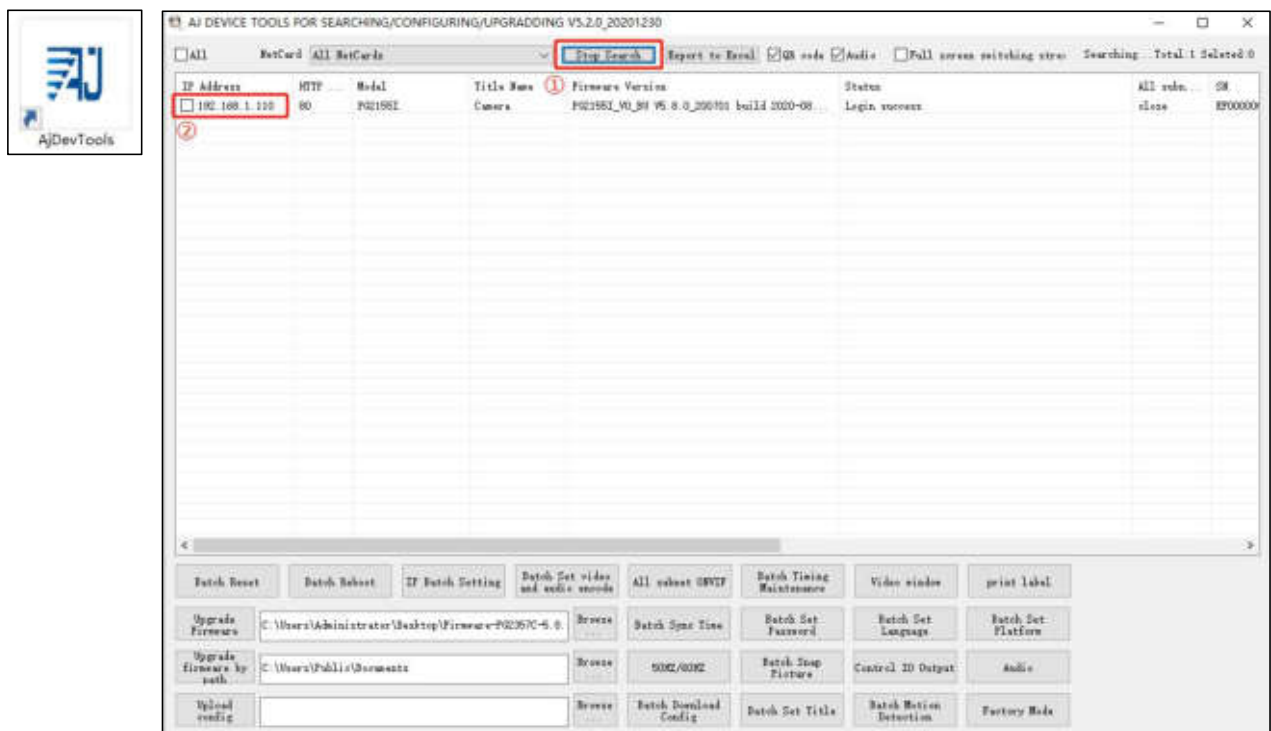
Chapter 3 Access to the Network Camera

3.1 Accessing by Web Browsers

Steps:

- 1.Computer download and install the AjDevTools or SADP software tool.
- 2.After installation,open the software and click the Start Search.

- ① Search for the IP address of the camera;
- ② Query the IP address of the Camera;

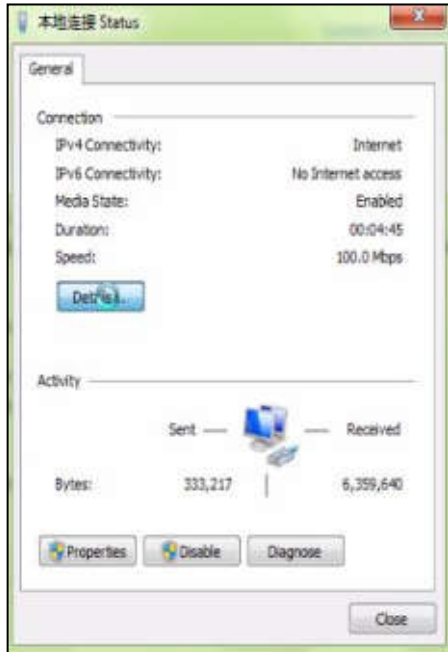


3.Query your computer IP address

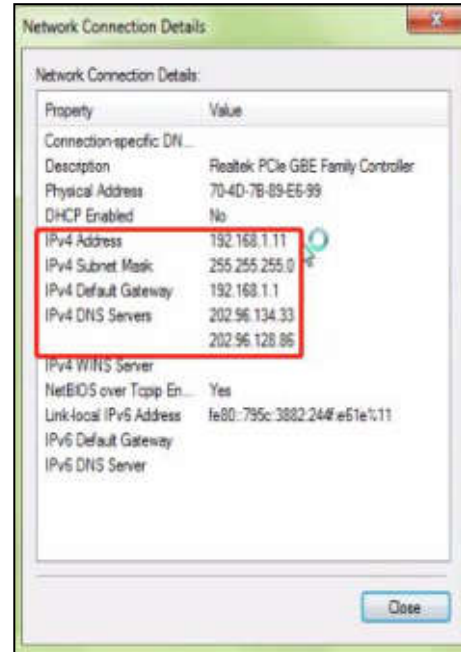
- ① Open Network and Sharing Center--- ② Detils;
- ③ View your computer's IPv4 Address、 Subnet Mask and Gateway;



①



②

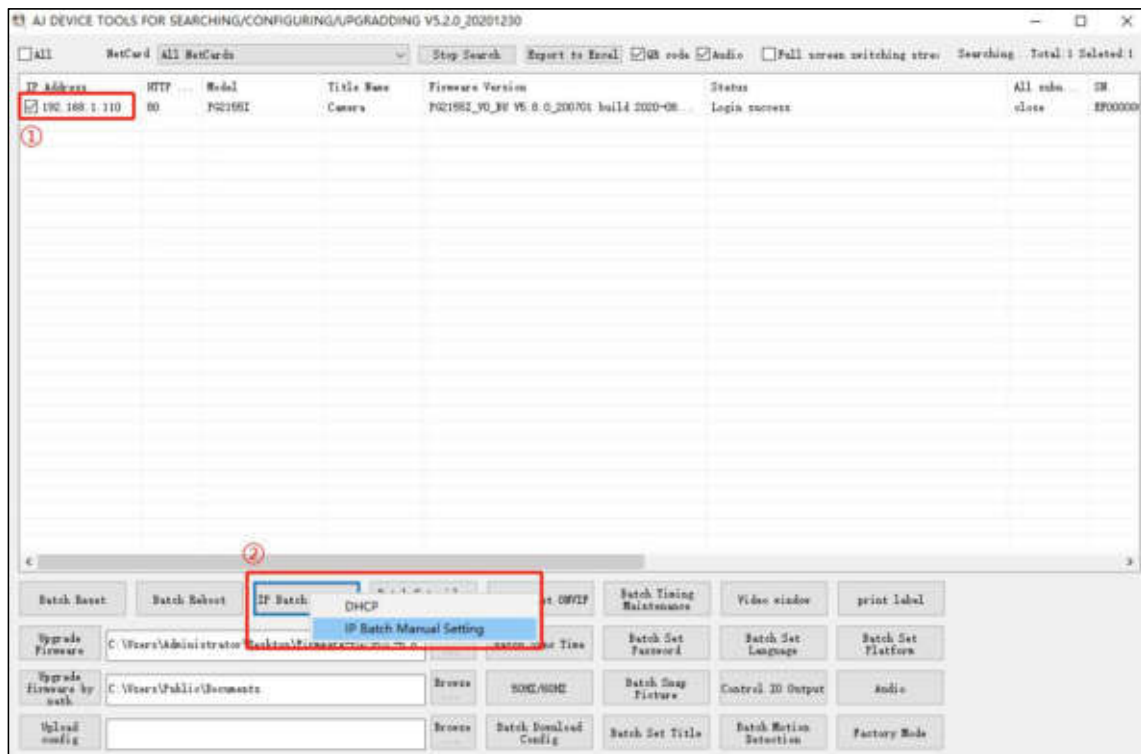


③

4. Modify the IP address of the camera and computer in the same network segment

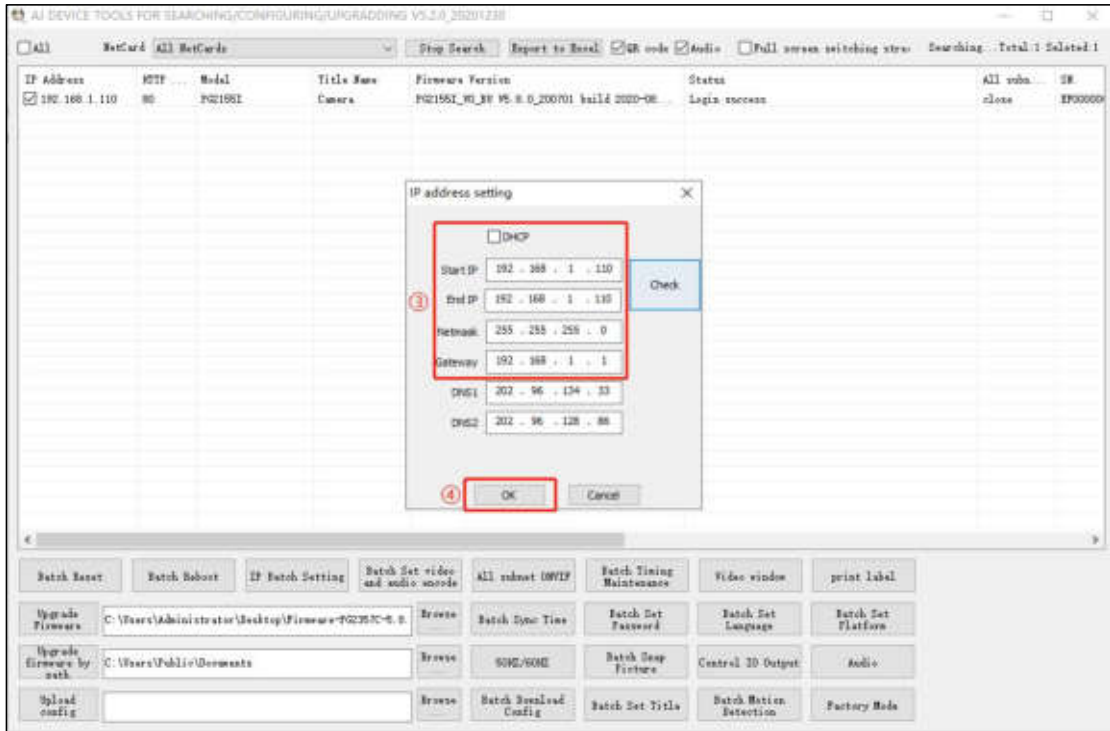
Setting method: ① Select the IP address of the camera;

② Click IP Batch Manual Setting IP address;

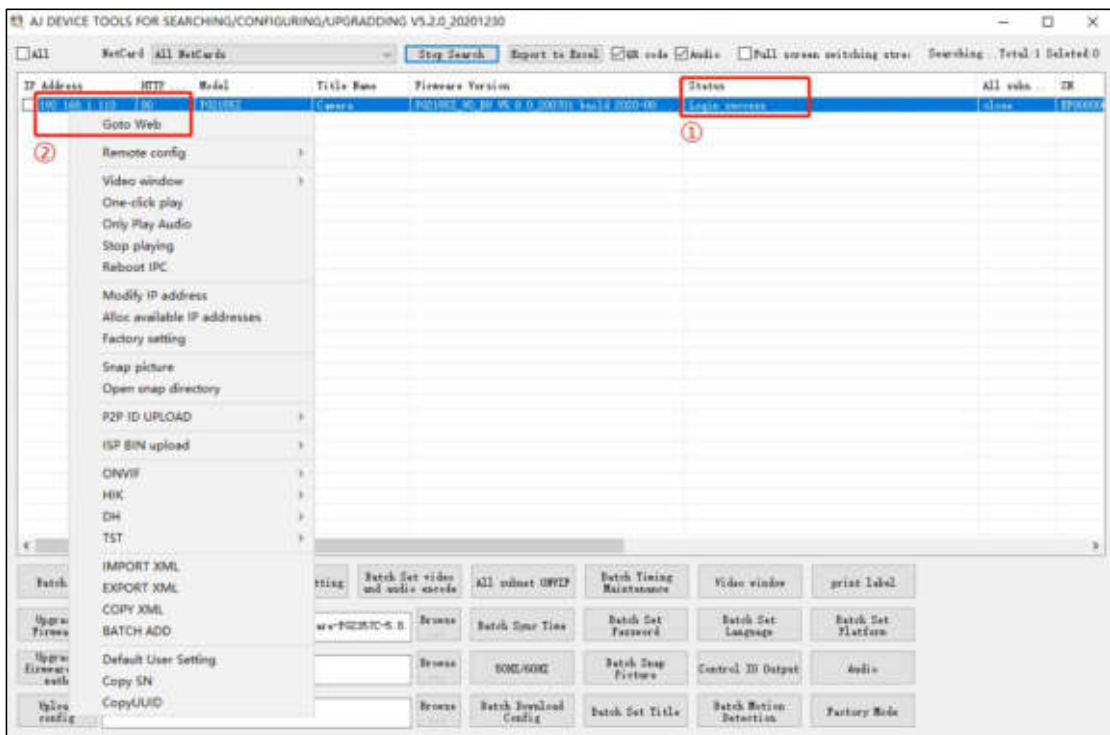


③ Modify the IP address of the camera to be in the same network segment as the IP address of the computer or choose DHCP to obtain an IP address automatically;

④ Select OK--Successfully modified;



5.The status shows that the Login success, it can be accessed by the computer Web;

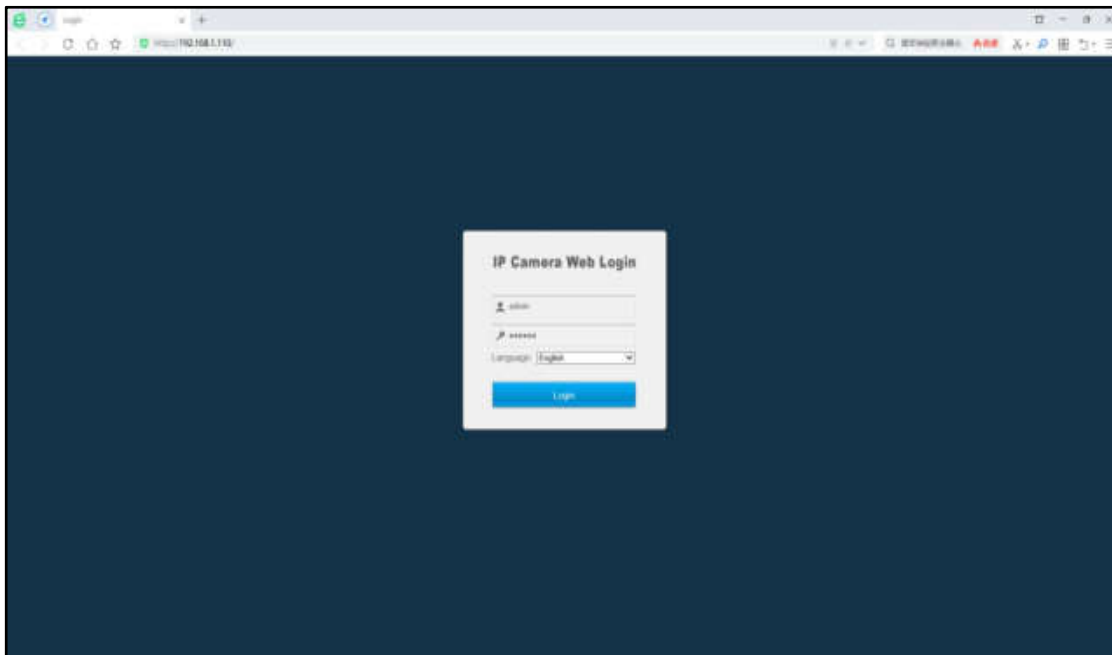


3.2 Web login

1. Open the web browser or click Go to web;
2. In the browser address bar, input the IP address of the network camera, and press the Enter key to enter the login interface;
3. Input the user name and password and click Login.

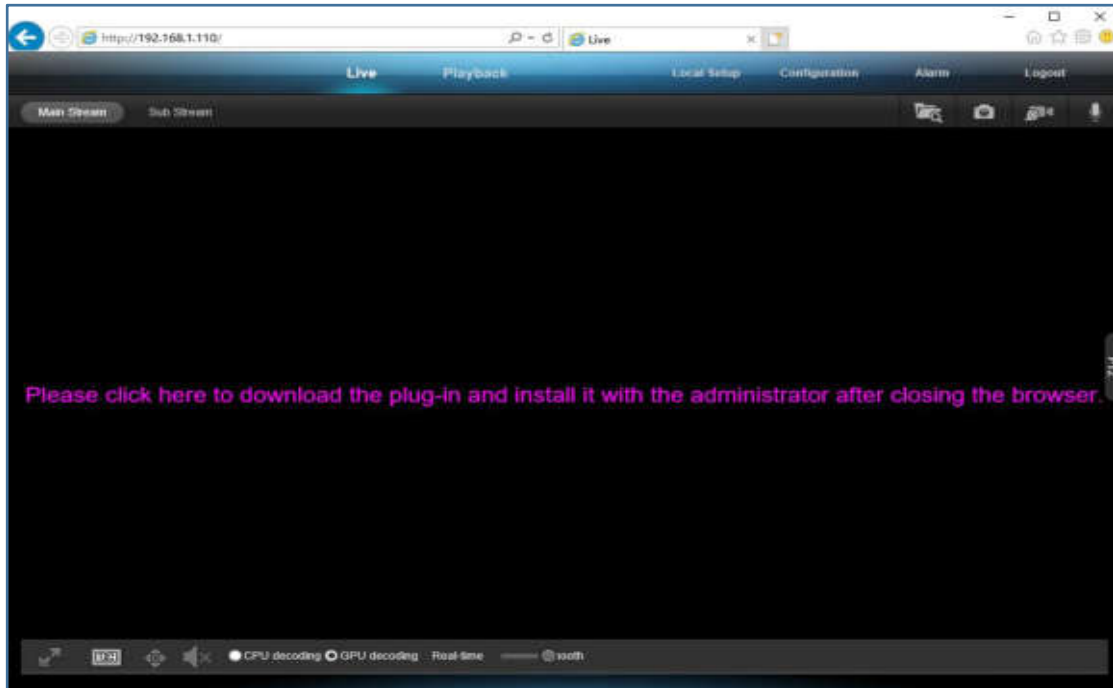
Note:

The default IP address is **192.168.1.110**. Username: **admin** Password: **123456**
First login Click **“install Web Plug-in”** when prompted.



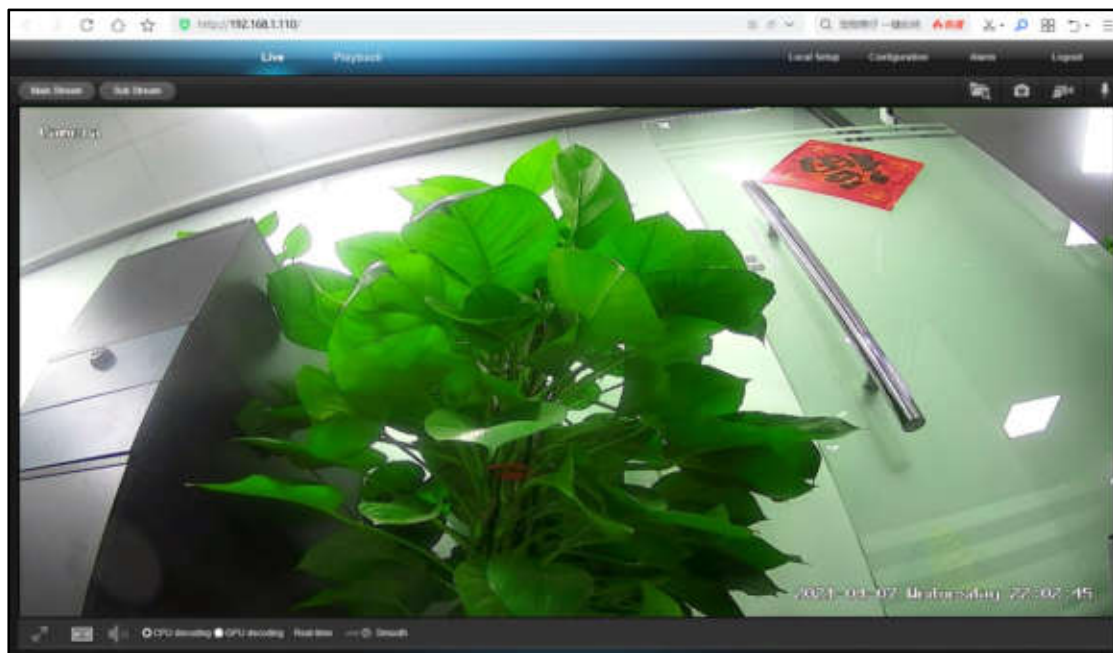
①

- ① You have to download and run the executable as administrator.



②

② If failed to install plug-in, download and save the WEBConfig.exe to computer, close all browsers then re-install it.



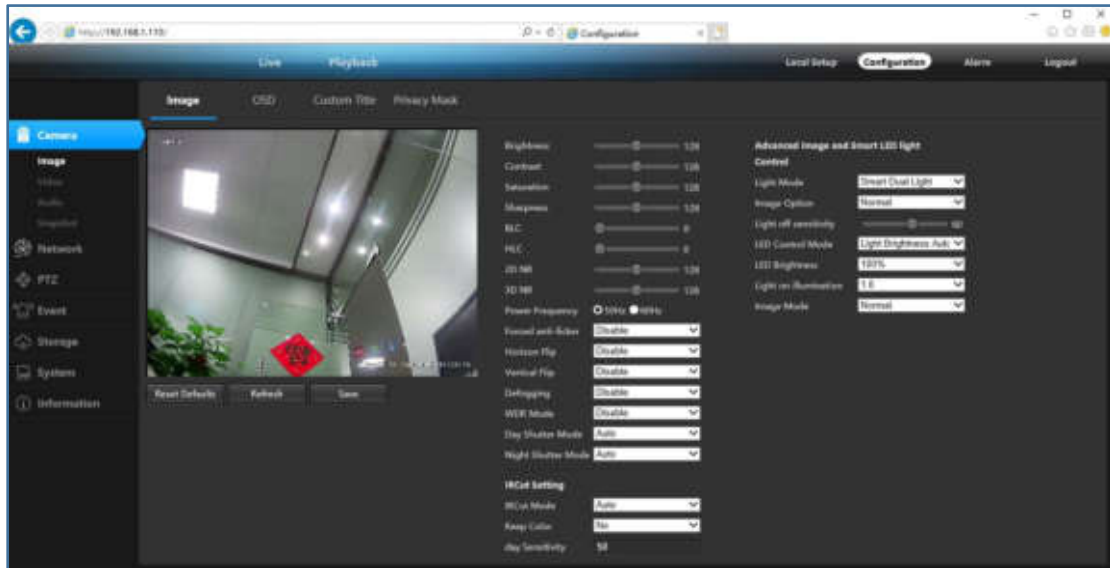
③

③ If there is a delay in video response when accessing remotely, please switch to Sub Stream instead. To learn the function of each button, just put the mouse on, it will show screen tips.

Chapter 4 Camera General Configurations

4.1 Configuring Image Settings

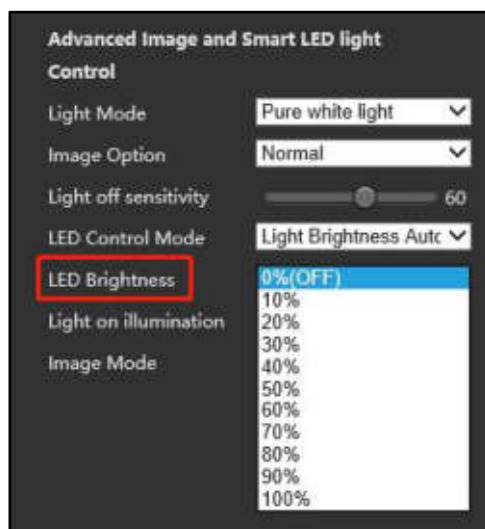
Steps: Configuration > Camera > Image > Image.



Purpose :

Configure the Brightness, Contrast, Saturation, Sharpness, BLC, HLC, 2D 3D NR, **Power Frequency (50Hz PAL/60Hz NTSC)**, WDR, IRCut Setting, Advanced Image and Smart LED light Control.

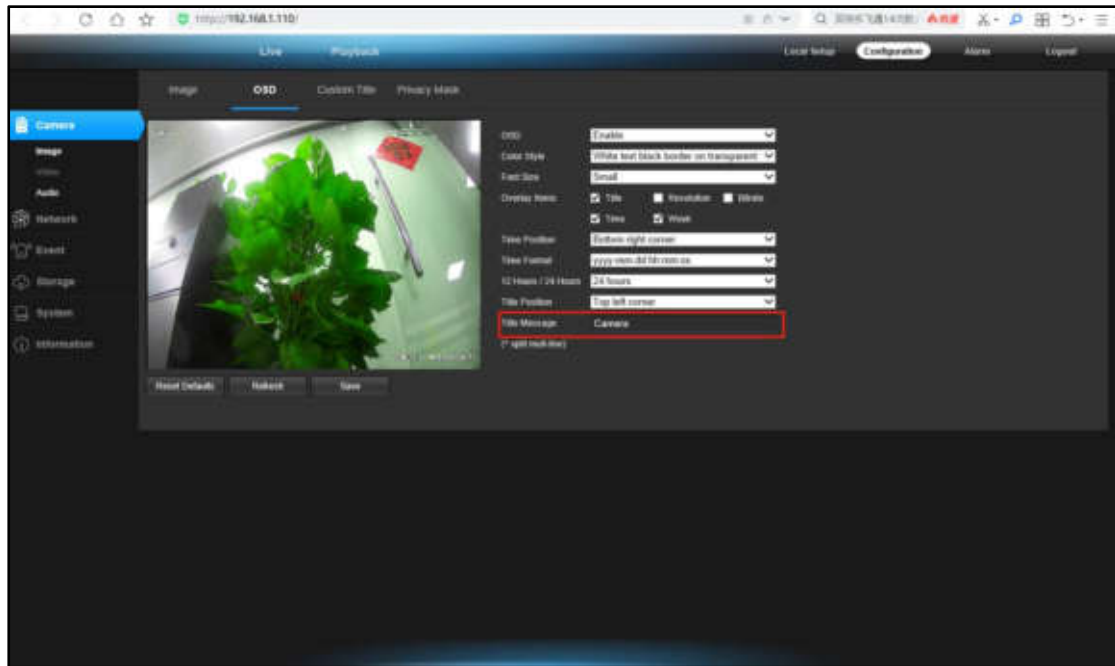
LED Brightness According to the application scenarios of different cameras, the brightness of the lamp can be adjusted, and the adjustment parameters are subject to the actual product.



Note: The display parameters vary according to the different camera models. Please refer to the actual interface for details.

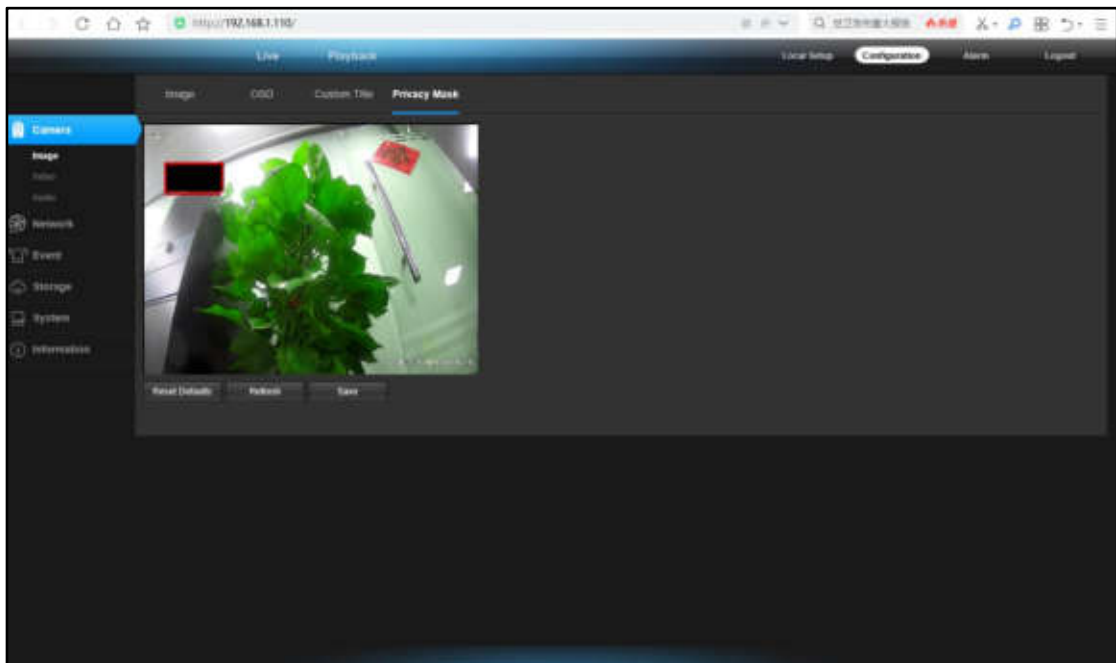
4.2 Modify the camera “Title name”

Steps: Configuration > Camera > Image > OSD > Title Message.



4.3 Privacy Mask function settings

Steps: Configuration > Camera > Image > Privacy Mask > Left mouse button > Select the privacy section > Save. (Can choose four Privacy Mask parts.)

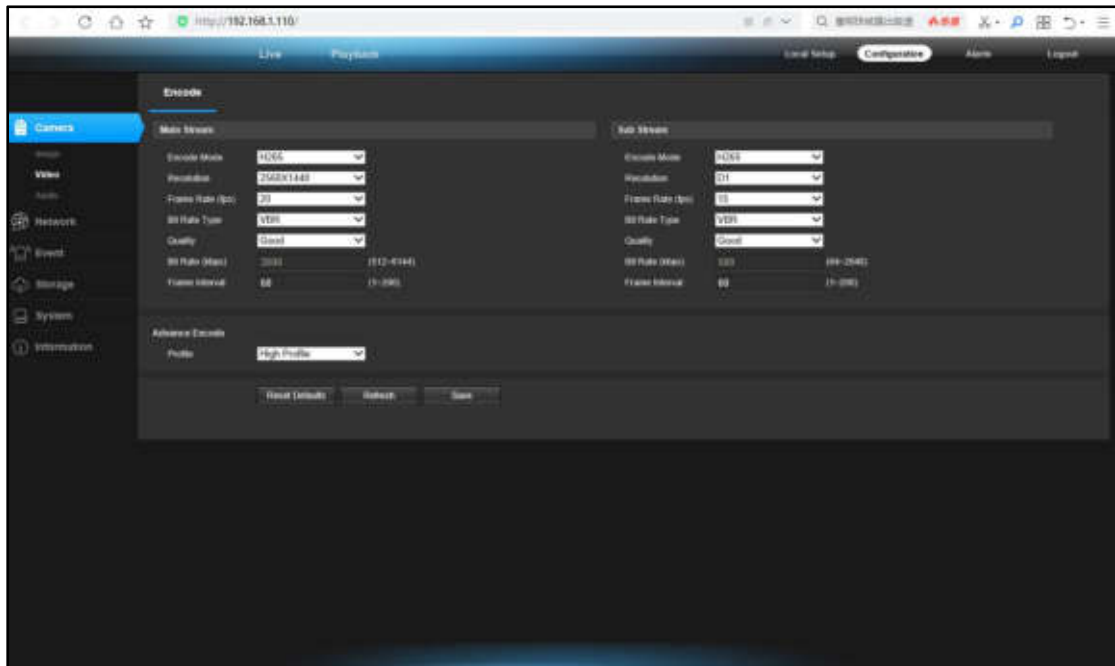


4.4 Video parameter settings

Steps: Configuration > Camera > Video > Encode > Main Stream >

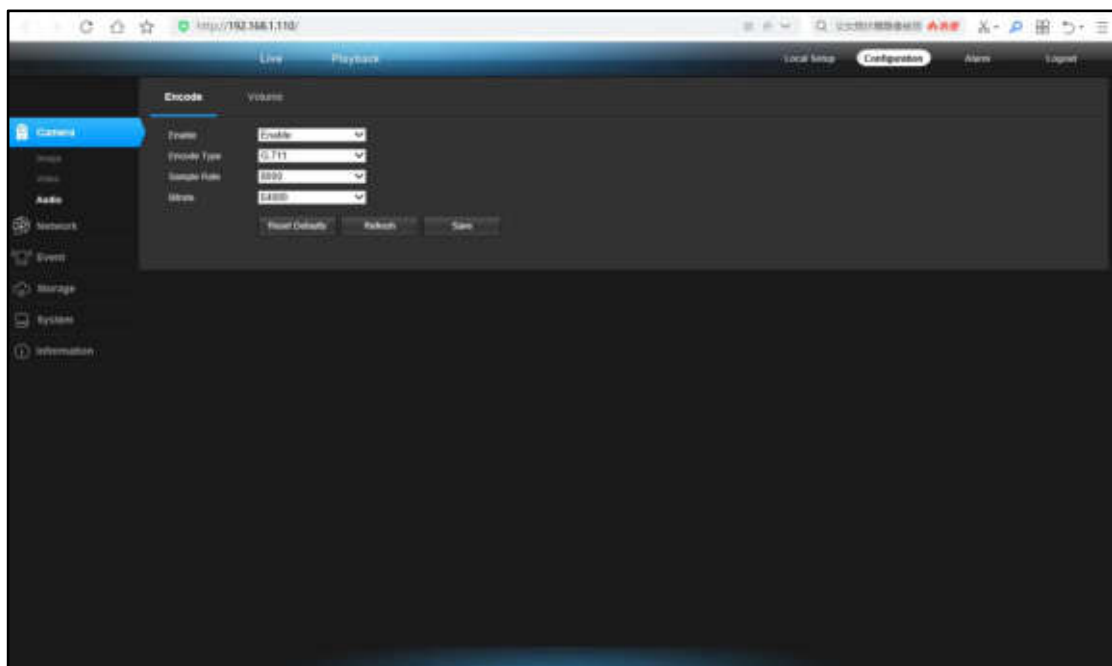
Sub Stream > Advance Encode > Save.

(Can Modify Encode Mode -Resolution-FPS-Video Quality-Bit Rate.)



4.5 Audio settings

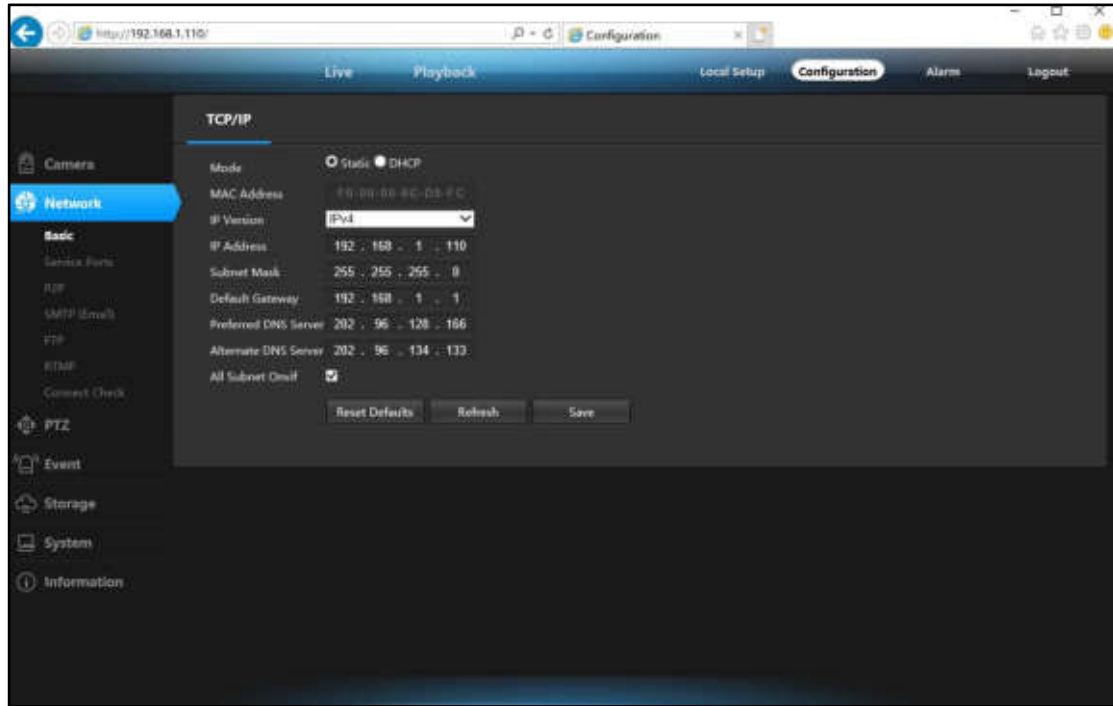
Steps: Configuration > Camera > Audio > Encode > Volume > Save.



4.6 TCP/IP settings

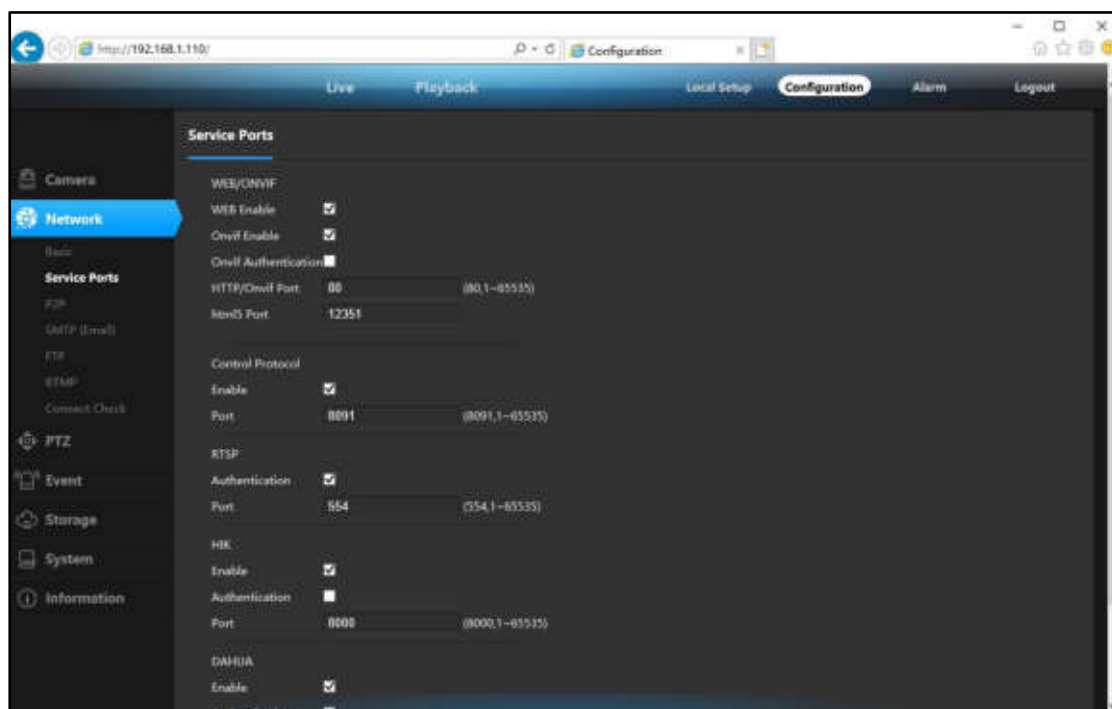
Steps: Configuration > Network > TCP/IP > Save.

(Can manually modify and DHCP IP address.)



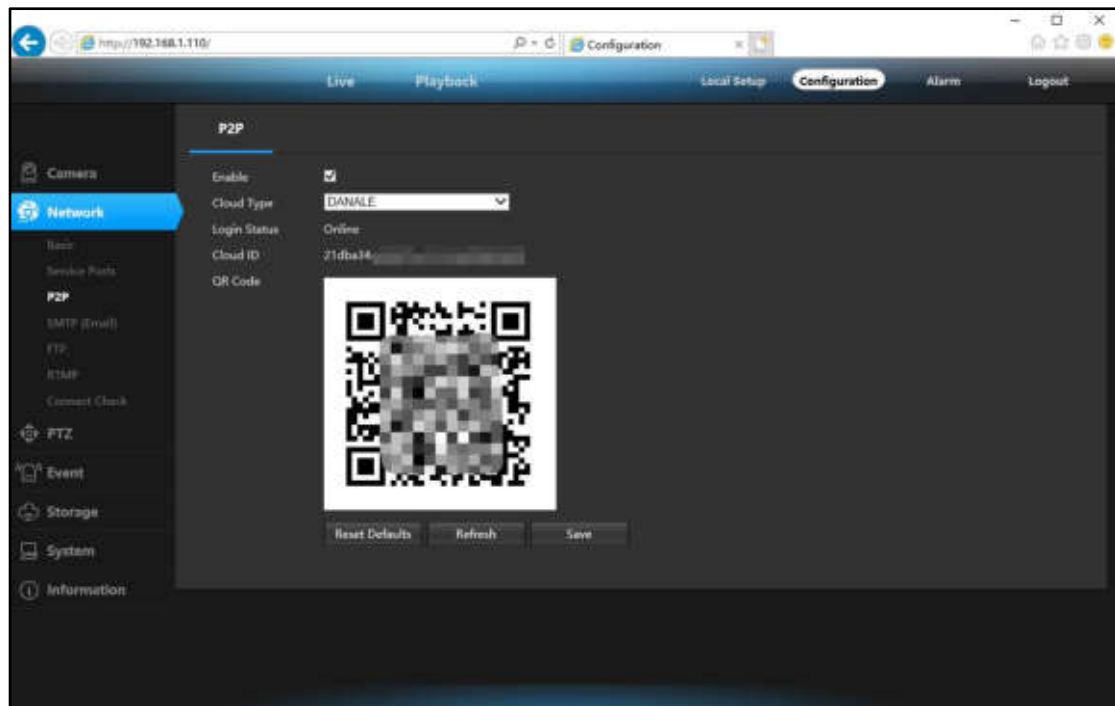
4.7 Service Ports function settings

Steps: Configuration > Network > Service ports > Enable > Save.



4.8 P2P function settings

Steps: Configuration > Network > P2P > Enable > Save.



Using the P2P ID and QR code, you can access the camera remotely anywhere via smart phone with Internet access.

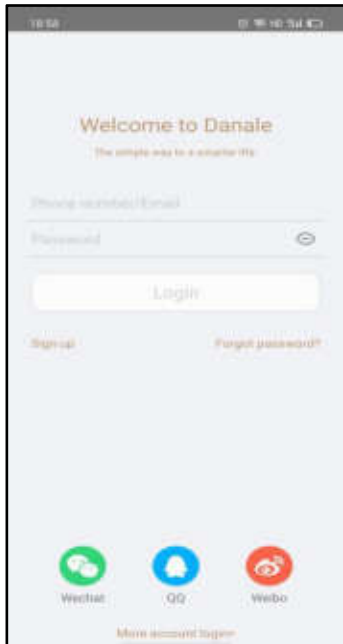
Please register an account via mobile phone after installing the **Danale** APP from APP Store or Google Play Market, then log in and add your camera to start previewing.

Or you can go to the website <http://www.danale.com/> to register if you need PC remote access. You can download APP from the website to find out more.

P2P function add steps:

Visit the Apple App Store or the Google Play Store to download the Danale app for iOS or Android devices.

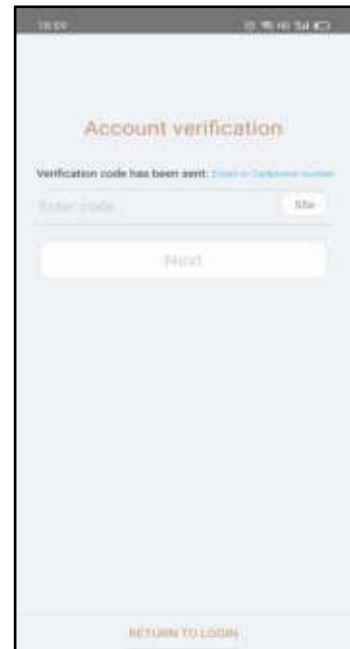
Scan QR code download



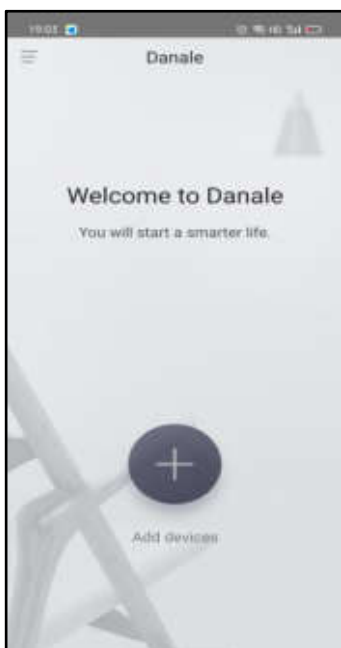
①



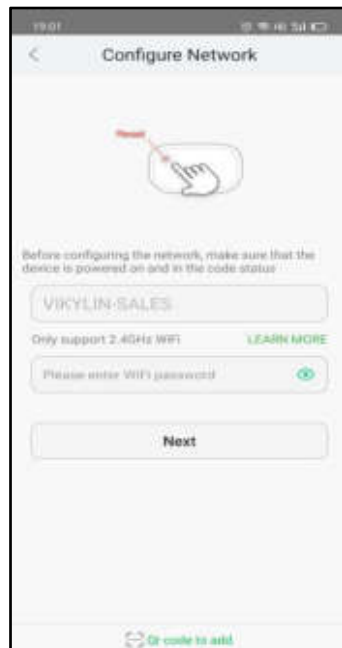
②



③



④

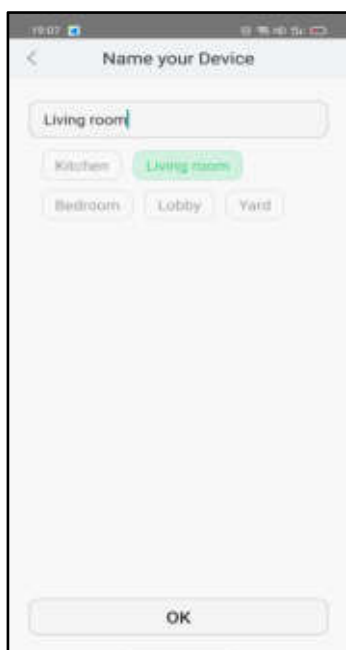


⑤



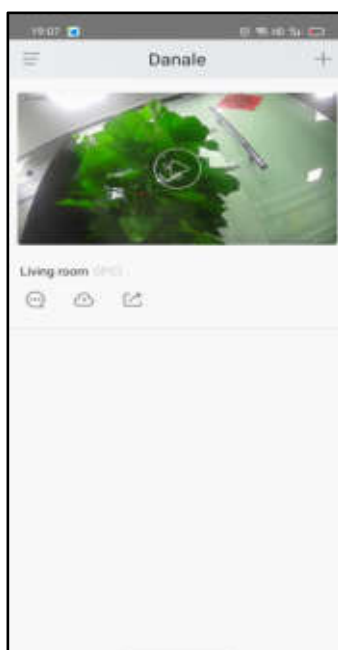
⑥

- ① For new users, please select “Sign UP” .
- ② Create Account ,Please enter your email or mobile number
- ③ Fill in the received verification code
- ④ Select to Add devices
- ⑤ Select “QR Code to add ” to get into the scan camera QR code page, or select “NEXT” to discover the connected local LAN IP camera.
- ⑥ Scan the QR code of the P2P interface displayed on the web side of the camera



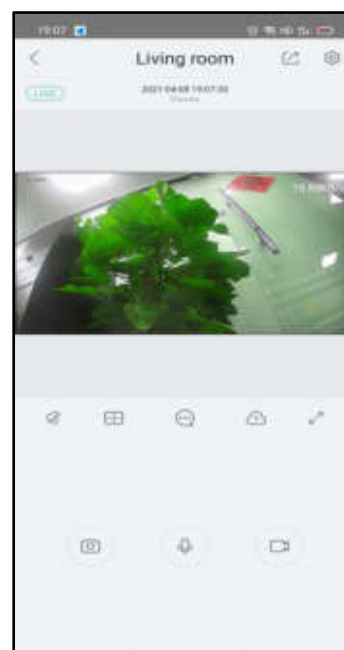
⑦

⑦ Choose Name you Device.



⑧



⑧ The camera has been successfully added to the phone.



⑨

⑨ Select the camera list to start viewing video.

Tips:

- ① Select  to check your account profile and configure settings
- ② To share your camera with your friends or another user, click “  ” icon and type in or scan his/her Danale account.

Note:

If you can not connect the camera, please check your Internet connection and verify the IP address, gateway, and DNS setting in the camera. The Cloud login status should be online, which means the camera has registered to the cloud server.

4.9 SMTP (Email) function settings

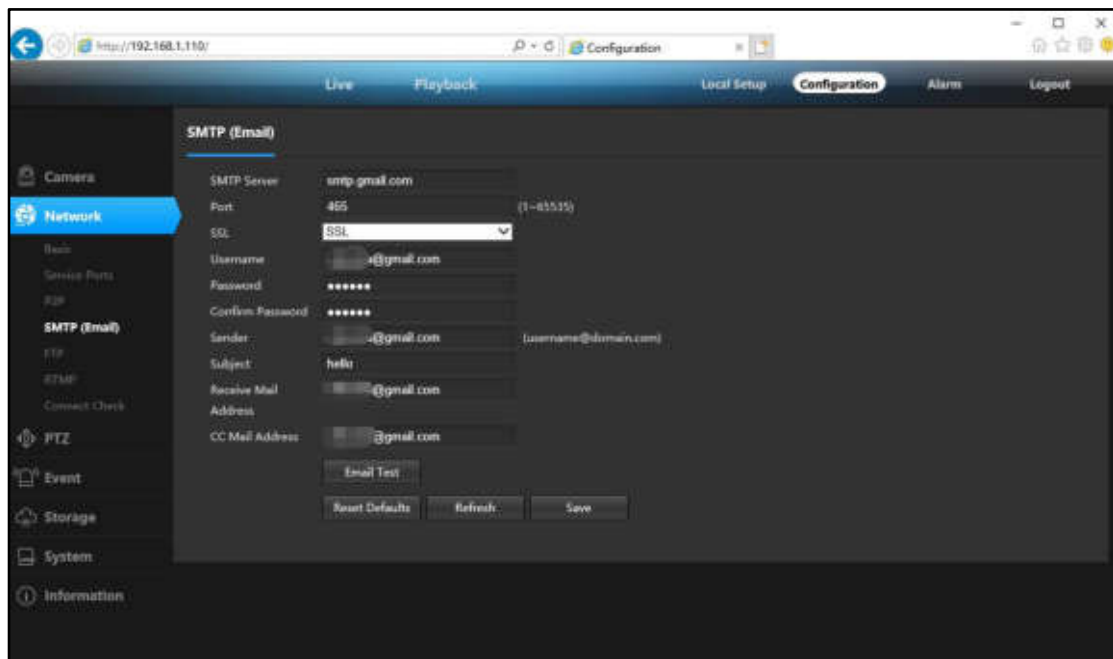
Steps: Configuration > Network > SMTP (Email) > Save.

Purpose:

The system can be configured to send an Email notification to all designated receivers if an alarm event is detected, e.g., motion detection event.

Before you start:

Please configure the DNS Server settings under Configuration > Network > Basic > TCP/IP before using the Email function.



SMTP Steps:

1. Enter the TCP/IP Settings (Configuration > Network > Basic > TCP/IP) to set the IPv4 Address, Subnet Mask, Default Gateway and the Preferred DNS Server.
2. Enter the SMTP (Email) interface: Configuration > Network > SMTP (Email).
3. Configure the following settings:

SMTP Server: IP address or host name (e.g., smtp.gmail.com) of the SMTP Server.

Port: The SMTP port. The default TCP/IP port for SMTP is 25 (not secured). And the SSL SMTP port is 465.

SSL:Disable, SSL, and StartTLS. When you select SSL or TLS , e-mails will be sent after encrypted by SSL or TLS. The SMTP port should be set as 465 for this encryption method.

Username:Enter the correct email address.

Password: Need a third party authorization password.

Sender:Sender email address.

Receive Mail:The email address of user to be notified.

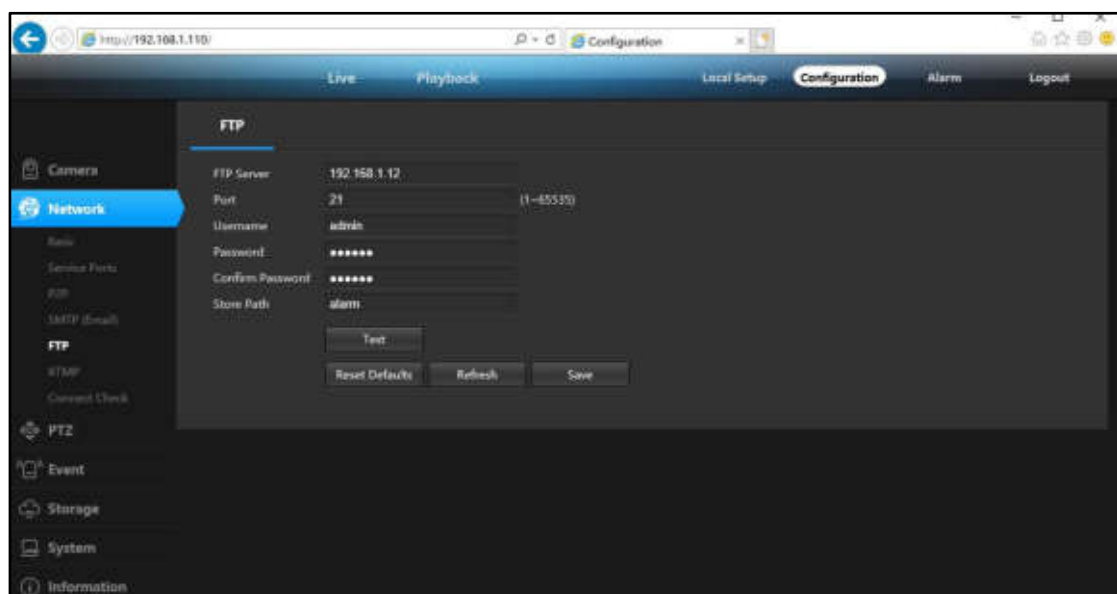
4. Click **Save** to Save the setting.

4.10 FTP function settings

Steps:Configuration > Network >FTP >Save.

Purpose:

You can configure the FTP server related information to enable the uploading of the captured pictures to the FTP server. The captured pictures can be triggered by events or a timing snapshot task.

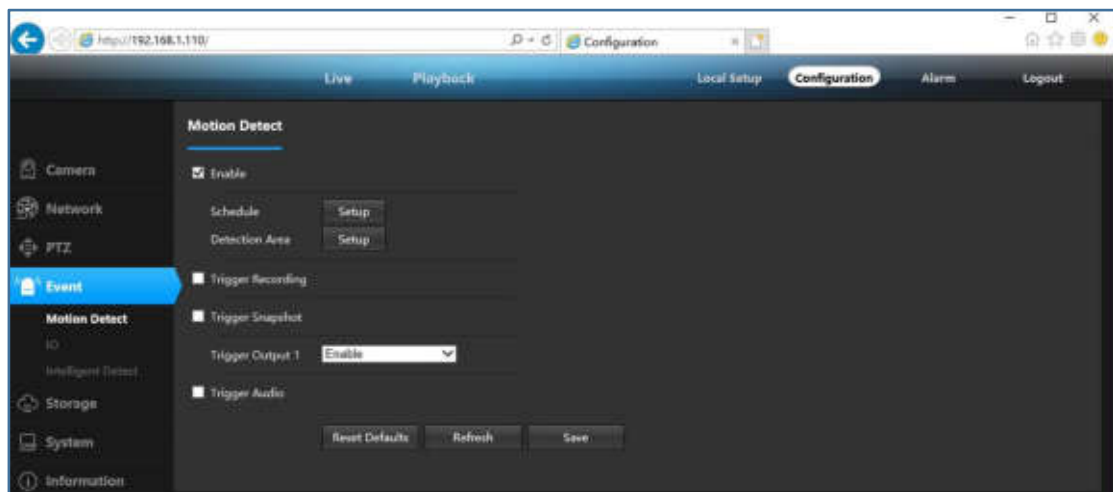


FTP Steps:

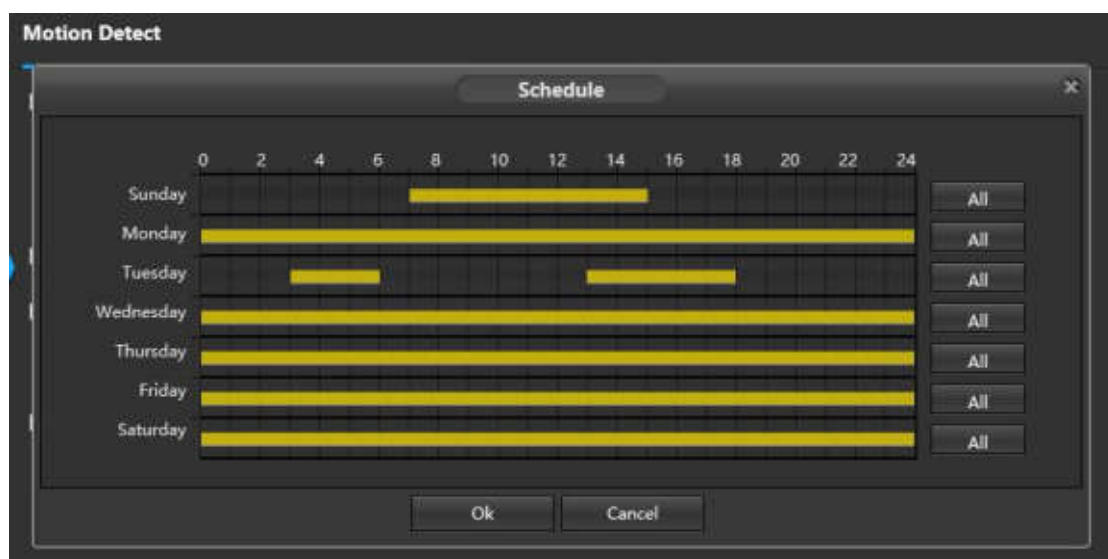
1. Input the server address and port.
2. Configure the FTP settings; and the user name and password are required for the server login.
3. FTP Store Path.
4. Click **Save** to Save the setting.

4.11 Enable Motion Detection Alarm

Steps: Configuration > Event > Video Detection > Enable > Setup Schedule > Setup Detection Area.



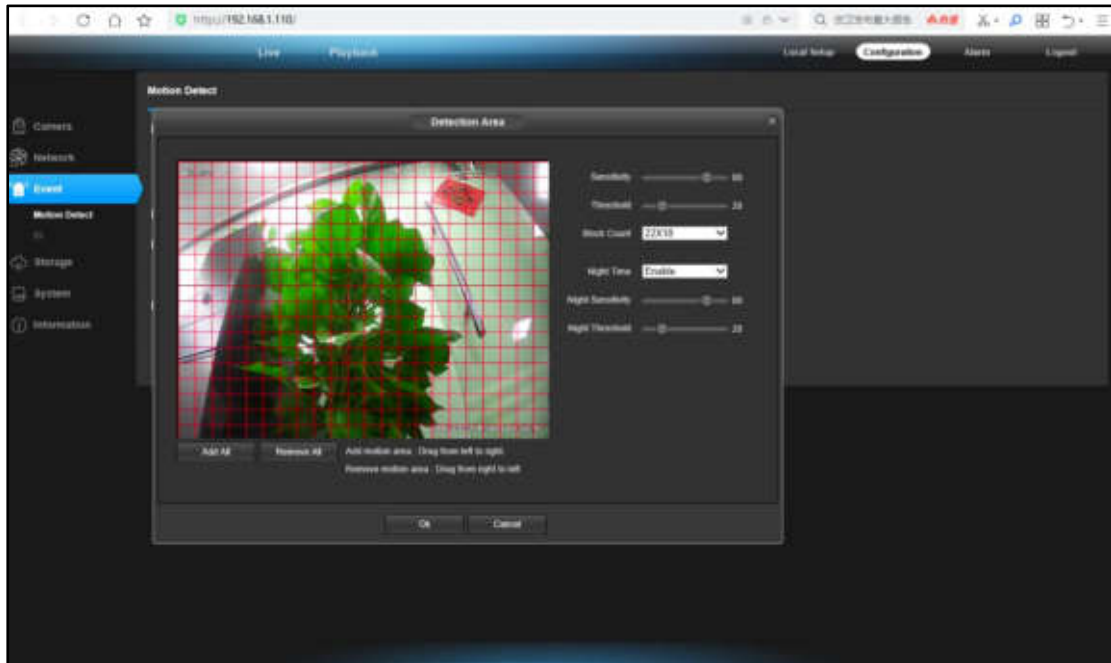
Schedule: Click Schedule “Setup” to set alarm period. It can enable alarm event only in the working period, then click “Ok” to complete schedule setting



It is to set working period accordingly to the following methods:

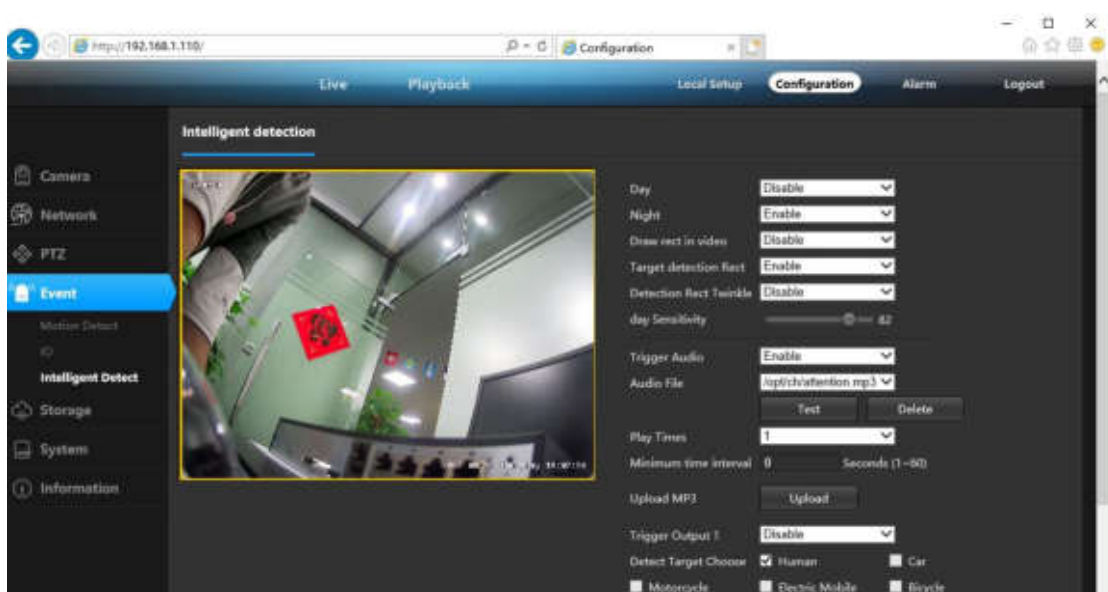
- Press the left mouse button to drag on the setup interface to set.
- Click All to select the whole day

Detection Area: Click Schedule “Setup”--Sensitivity--Threshold--Block Count--Night Time(Enable)--Night Sensitivity--Night Threshold.



4.12 Enable Intelligent Detect Alarm

Steps:Configuration > Event > Intelligent Detect> Save.

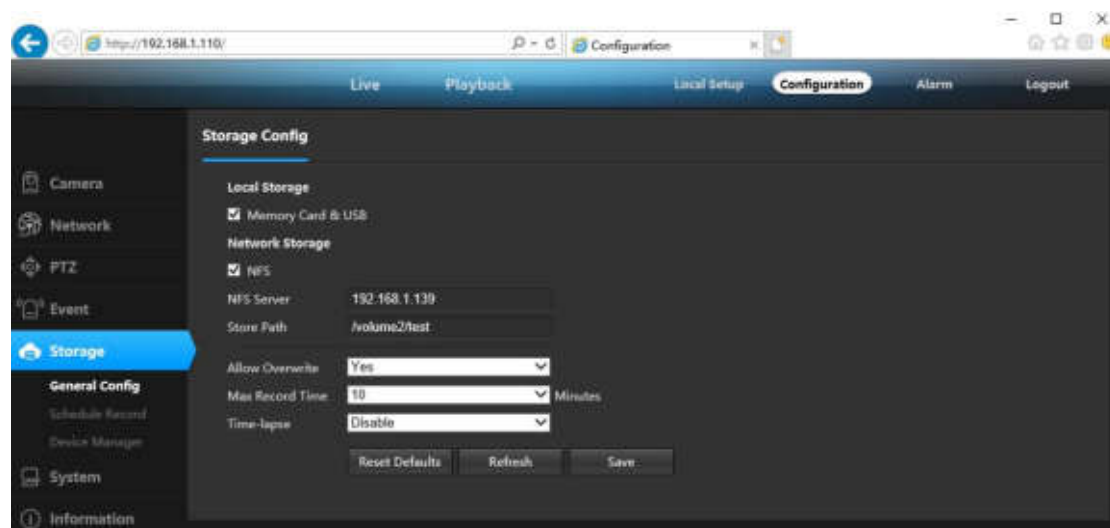


Intelligent detection Steps:

1. **Day and Night:** Intelligent detection opening time selection.
2. **Draw rect in video:** Set the size of the detection area.
3. **Target detection Rect:**Preview Display Detection Target Box.
4. **Sensitivity:** Range [1-100]. Sensitivity stands for the percentage of the body part of an acceptable target that enters the pre-defined region
5. **Trigger Audio:**Need to support speaker function can voice alarm prompt.
6. **Detec Target Choose:**Currently only supports Human detection.
7. Click **Save** to Save the setting.

4.13 Storage Setting

Steps:Configuration > Storage > General Config > Save.



NFS Steps:

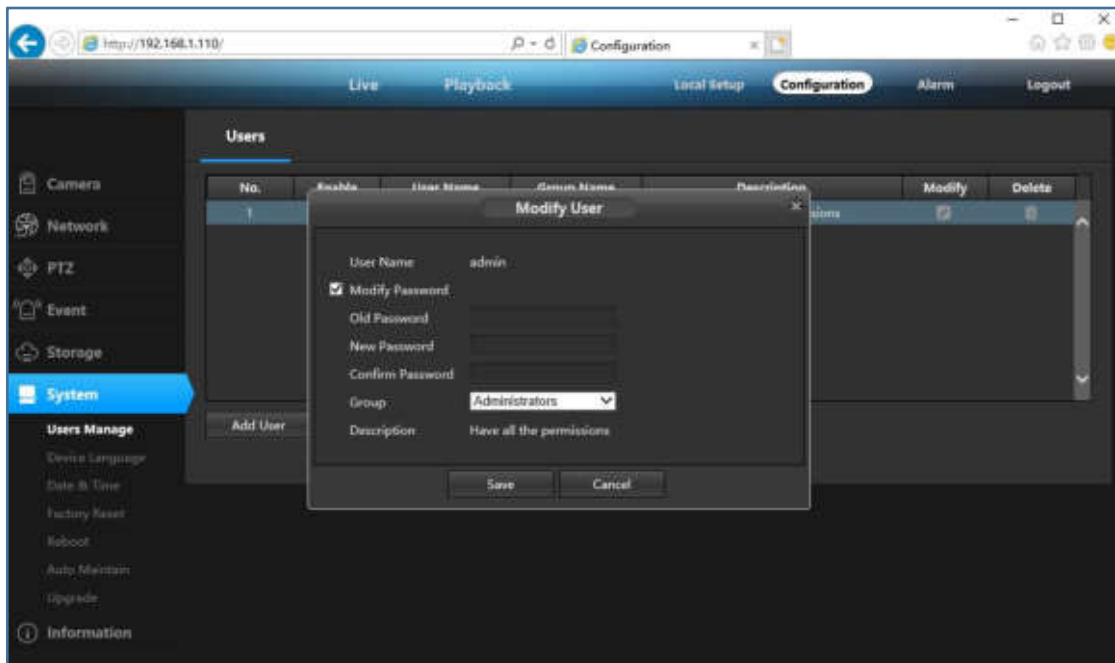
1. Select NFS , fill in the correct NFS server IP address and Store Path.
2. Click **Save** to Save the setting.
3. View Device Manager--Network Storage Device--State is mount

Tips:

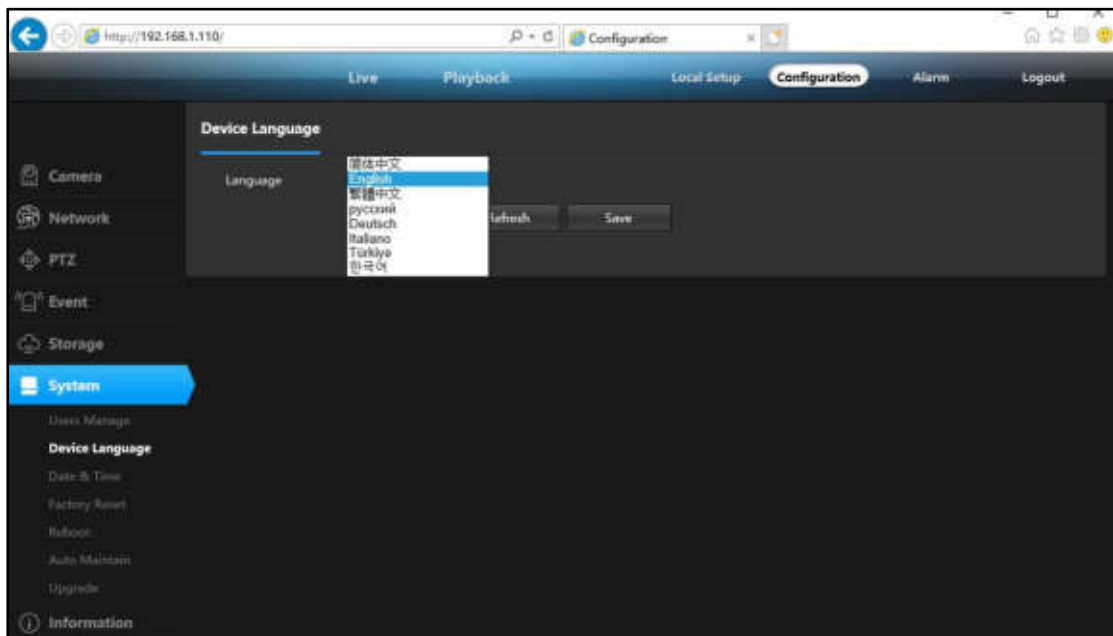
Before saving NFS, please confirm if the NFS server has been opened, and the read and write permissions have been turned on.

4.14 Users Manage Modify Password

Steps: Configuration > System > Users Manage > Users > Add User or Modify Password.



4.15 Device Language



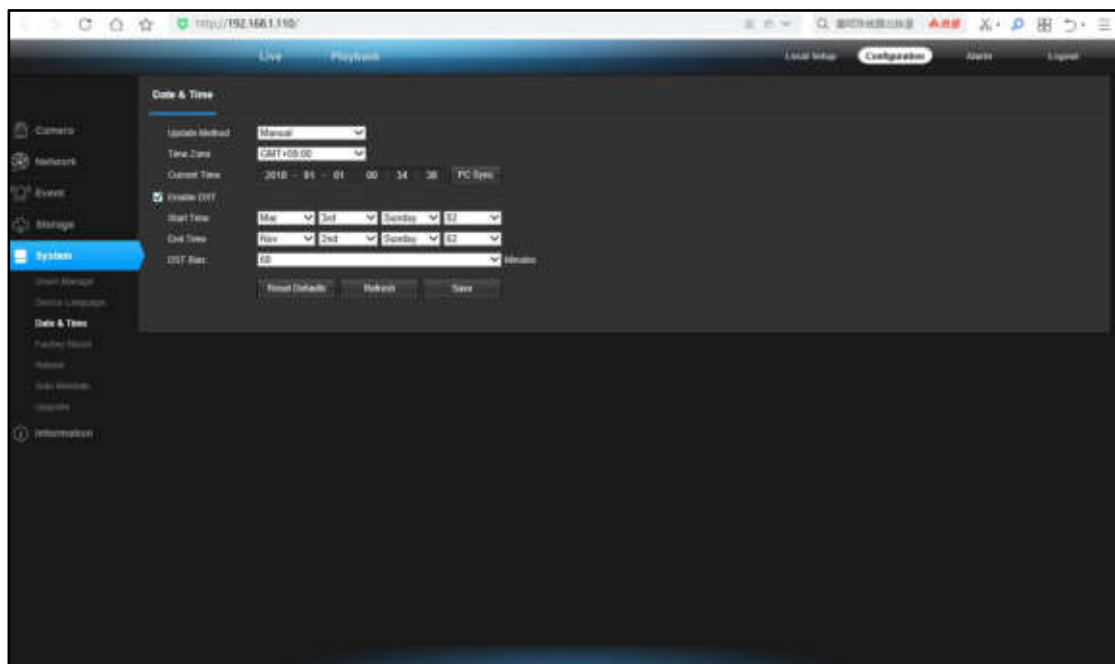
4.16 Modify the camera “Time & Date”

Steps: Configuration > System > Time setup.

There are two time update modes available: Manual and NTP.

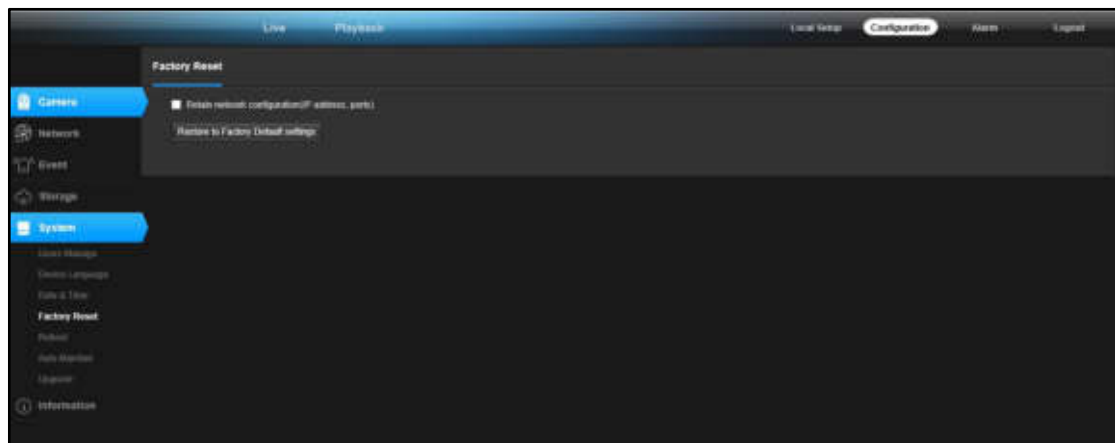
■ Select your **Time Zone**, and click **PC Sync**, click **Save**, You can also set up the DST (Daylight Savings Time) if necessary. (Time and date will reset to 2018-01-01 if camera was restarted)

■ If the camera is connected to the Internet, you can set up a **NTP server** for the camera to sync the time and date automatically.



4.17 Factory Reset

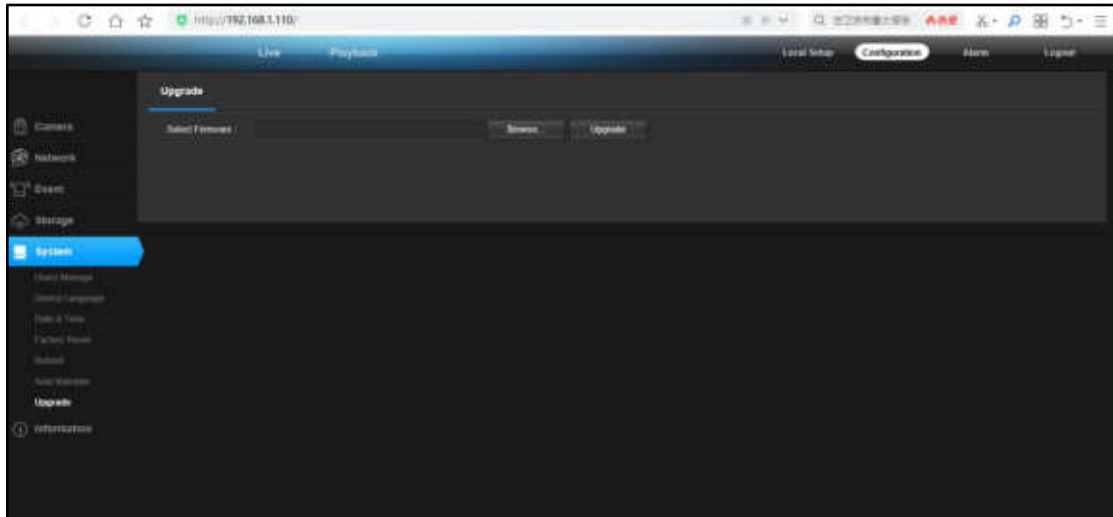
Steps: Configuration > System > Factory Reset.



4.18 Version firmware upgrade

Steps: Configuration > System > Upgrade > Select Firmware.

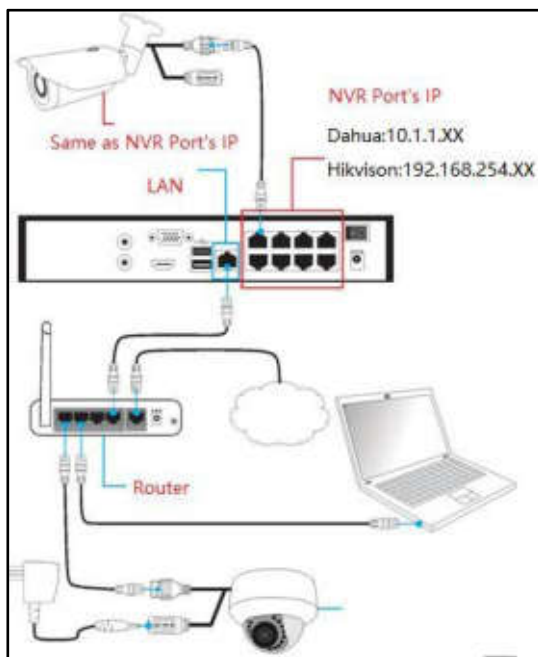
Normal state, it is not recommended to upgrade the firmware, please confirm the version with the technician before upgrading.



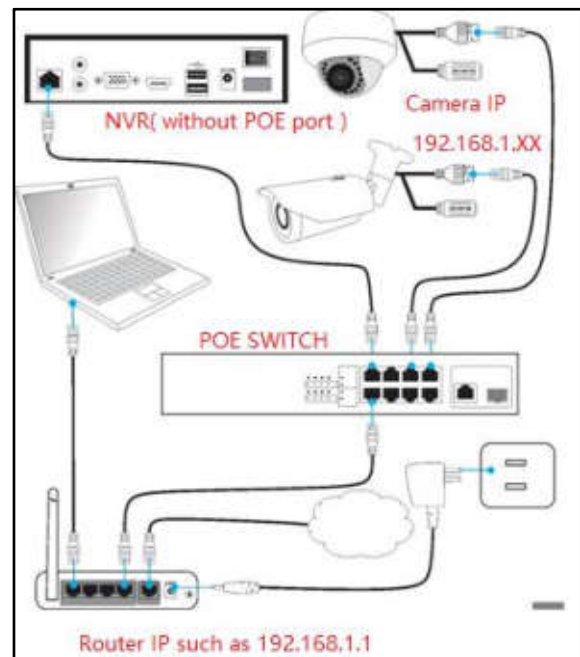
4.19 Camera Connection to NVR

There are two ways that connect to NVR (two types of NVR).

- Connect to POE port NVR.
- Connect to without POE port NVR.



POE port NVR



Without POE port NVR

The camera can work with Hikvision POE NVR, Plug and Play, besides, the IP camera also supports standard ONVIF protocol, which can be added to third-party video recorder easily with ONVIF.

Note:

① Before connecting cameras to NVR that has POE switch, make sure the NVR and cameras have valid IP scheme that matches each other. (e.g.: Dahua NVR POE Port's IP Network Segment is 10.1.1.XX, so the camera IP must be 10.1.1.XX)

② Before connecting cameras to NVR that has no POE switch, make sure the NVR, cameras and the POE switch router have valid IP scheme that matches each other. (e.g.: POE switch router's IP is 192.168.1.1, so the camera IP must be 192.168.1.XX)

③ Some POE NVR models support plug and play (such as Hikvision POE NVR), if the "Plug & Play" feature is not available or not applicable, please add camera manually.

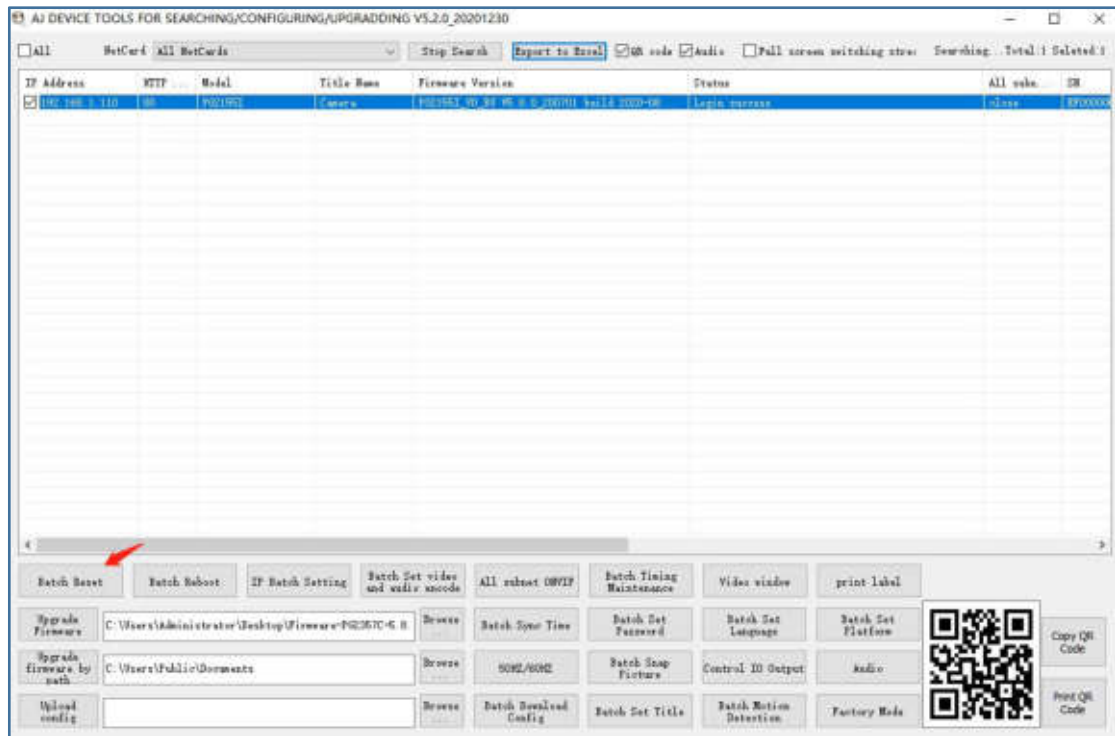
Chapter 5 Frequently Asked Questions

5.1 Why can't I open the default IP address 192.168.1.110 via web browser ?

The default IP address may not match your LAN's IP scheme. Check your computer's IP address before accessing the camera. If the IP address does not match the 192.168.1.x scheme, please install the IP search tool from the download website to modify the camera's IP address. Make sure the IP address of the camera matches the LAN IP scheme. For example, if your LAN is 192.168.0.xxx, then set the IP camera to 192.168.0.123 and so on.

5.2 How to reset the password ?

The default Username: admin, Password: 123456. If you lost the password or want to reset the camera's setting, please install the search tool to search the camera IP and click **Batch Reset** button.



5.3 How to upgrade the IP camera ?

①Ask the supplier for the suitable firmware. ②You can use the web browser, search tool, or PC client to upgrade the camera. ③Go to the **Configuration > System > update**, click **browse** and select the firmware, then click **Upgrade** button and wait for the operation to complete.

5.4 How to fetch the RTSP video stream and http snapshot ?

- ①Main Stream: rtsp://admin:123456@IP address/stream0
- ②Sub Stream: rtsp://admin:123456@IP address/stream1

5.5 Why does the NVR not show image after adding your IP camera ?

- ①Make sure you selected the right protocol and enter the correct username and password when adding the cameras.
- ②Make sure the NVR and IP camera are the same IP scheme.
(eg. NVR:192.168.1.x, and IP camera:192.168.1.y).
- ③Try changing the camera encode mode to H.264 if the NVR can't support H.265. (**Configuration -> Camera -> Video > Encode mode: H.264**)

5.6 How to make the NVR record in motion detection mode ?

- ① Enable the IP camera motion detection function via web browser.
- ② add the IP camera via ONVIF protocol.
- ③ change the NVR record mode to Motion Detection mode.
- ④ check the NVR screen motion detection icon and try playback (*Please refer to your NVR's manual for NVR's motion record option.*)

Dear Customer

Thank you for your recent purchase of our IP cameras. We hope you will be pleased with both the product and service you received. If not, please give our helpful customer service team an opportunity to improve your experience right away; our team members are more than happy to help.

Meanwhile, we also welcome you to post a Product Review so that others can benefit from your experience. As a growing business, we know how scarce time can be, so we especially appreciate your time and input.

We're always looking for ways to improve, so thanks again for your business, support ,and feedback.

Warm Regards

Customer Tech Support Team