

# PG Series POE Security Camera System

## Quick Start Guide



# Table of Contents

Chapter1 System Requirement.....	- 2 -
Chapter 2 Network Connection .....	- 3 -
2.1 Setting the Network Camera over the LAN .....	- 3 -
2.2 Wiring over the LAN .....	- 3 -
Chapter 3 Access to the Network Camera .....	- 5 -
3.1 Accessing by Web Browsers .....	- 5 -
3.2 Web login .....	- 7 -
Chapter 4 Camera Connection to NVR.....	- 11 -
Chapter5 Frequently Asked Questions.....	- 13 -
5.1 Why can't I open the default IP address 192.168.1.110 via web browser ?....	- 13 -
5.2 How to reset the password ? .....	- 13 -
5.3 How to upgrade the IP camera ? .....	- 13 -
5.4 How to fetch the RTSP video stream and http snapshot ? .....	- 13 -
5.5 Why does the NVR not show image after adding your IP camera ? .....	- 14 -

## Chapter1 System Requirement

### Operating System

Microsoft Windows XP SP1/7/8/10

### CPU

3.0 GHz or higher

### RAM

4G or higher

### Display

1024×768 resolution or higher

### Web Browser

**For camera that supports plug-in free live view**

Internet Explorer 8 – 11, Mozilla Firefox 30.0 and above version and GoogleChrome 41.0 and above version.

### *Note:*

If you want to use the full range of features, such as **Sound**, **Record**, **Sanpshot**, and **Talk**, please use Internet Explorer

## Chapter 2 Network Connection

### 2.1 Setting the Network Camera over the LAN

#### *Purpose:*

To view and configure the camera via a LAN, you need to connect the network camera in the same segment with your computer, and install the **AjDevTools** or **SADP** software to search and change the IP of the network camera.

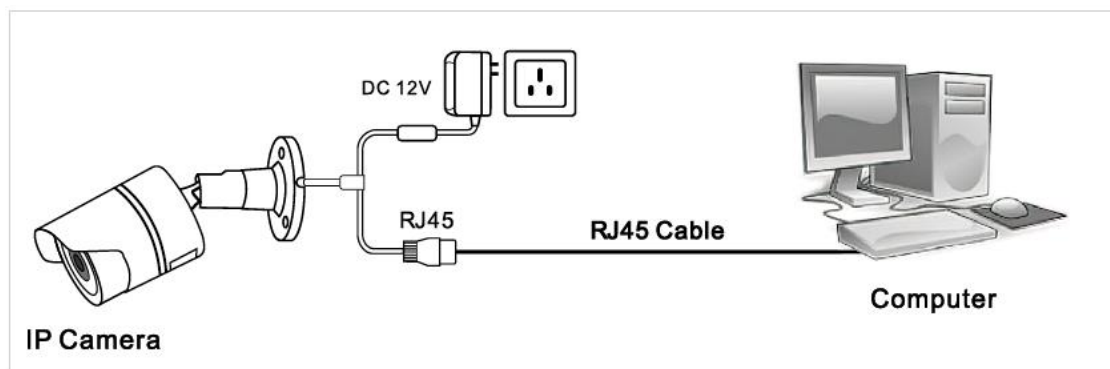
**Tools: <http://ourdownload.store/>**



### 2.2 Wiring over the LAN

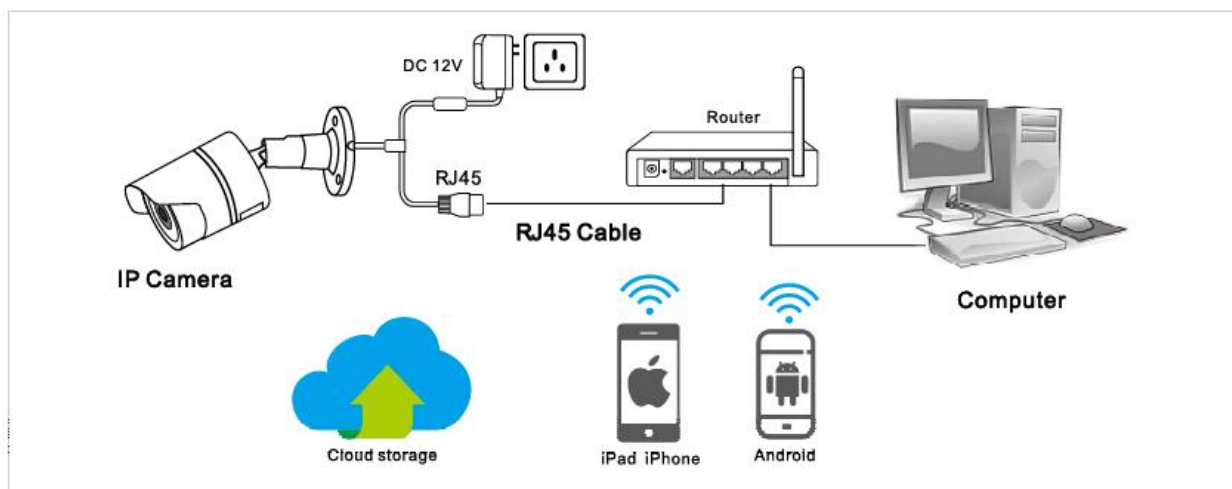
The following figures show the two ways of cable connection of a network camera and a computer:

#### 2.2.1 Connect directly

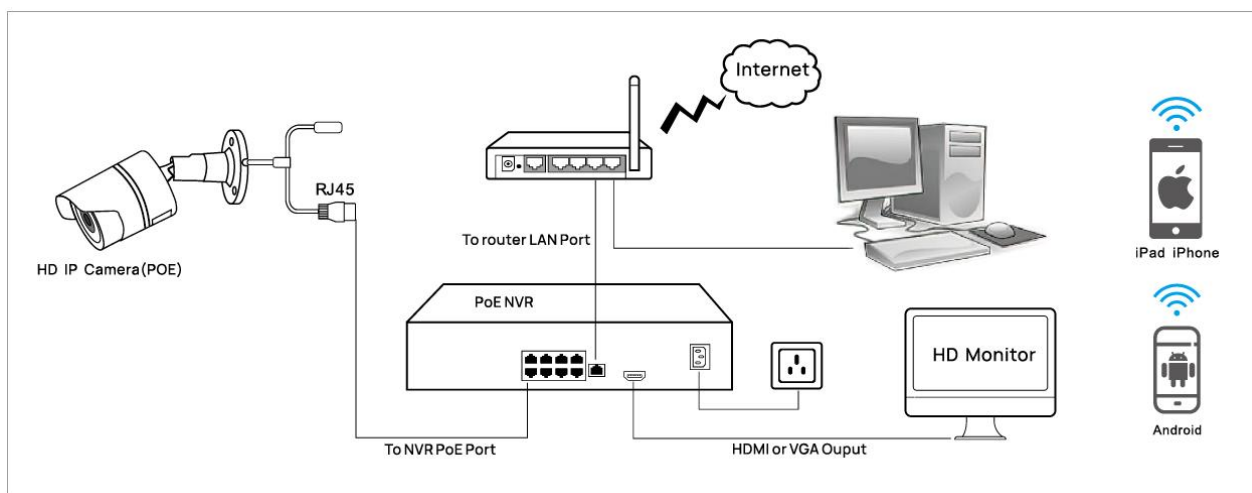


**Connecting Directly**

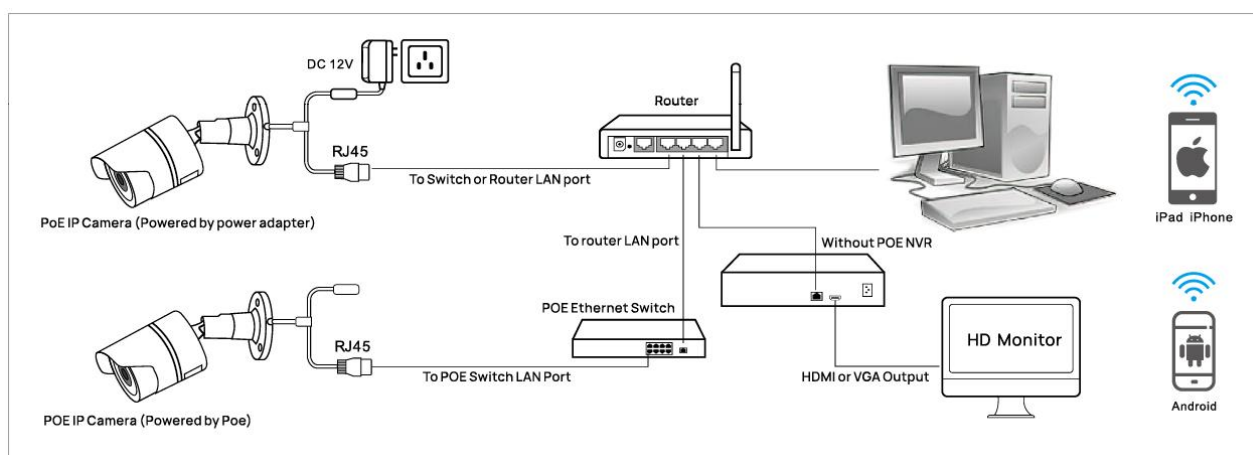
### 2.2.2 Connect via a switch or router. (If the switch is POE, no power is required for the camera)



### 2.2.3 Connect via network video recorder.



### NVR with POE



### NVR without POE

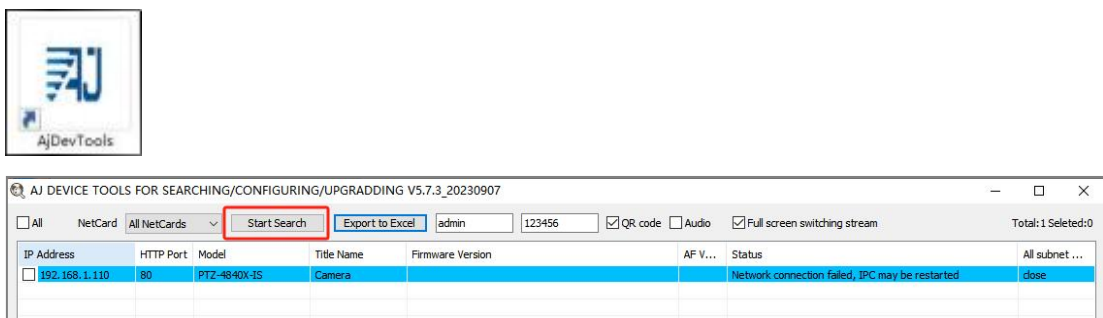
## Chapter 3 Access to the Network Camera

### 3.1 Accessing by Web Browsers

3.1.1 Computer download and install the **AjDevTools** or **SADP** software tool.

Please refer to 2.1

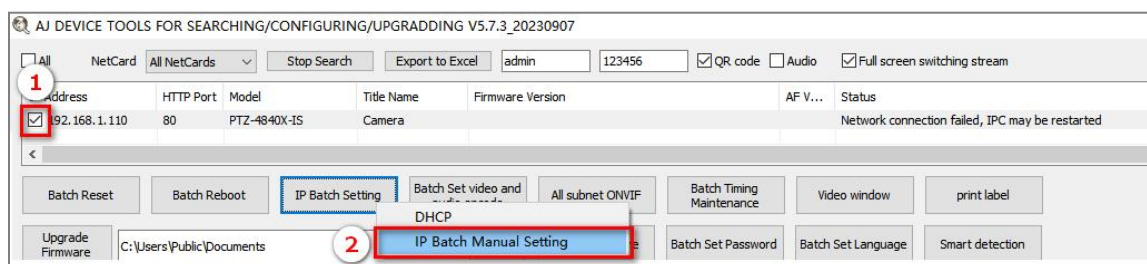
3.1.2 After installation, open the software and click the **Start Search**.



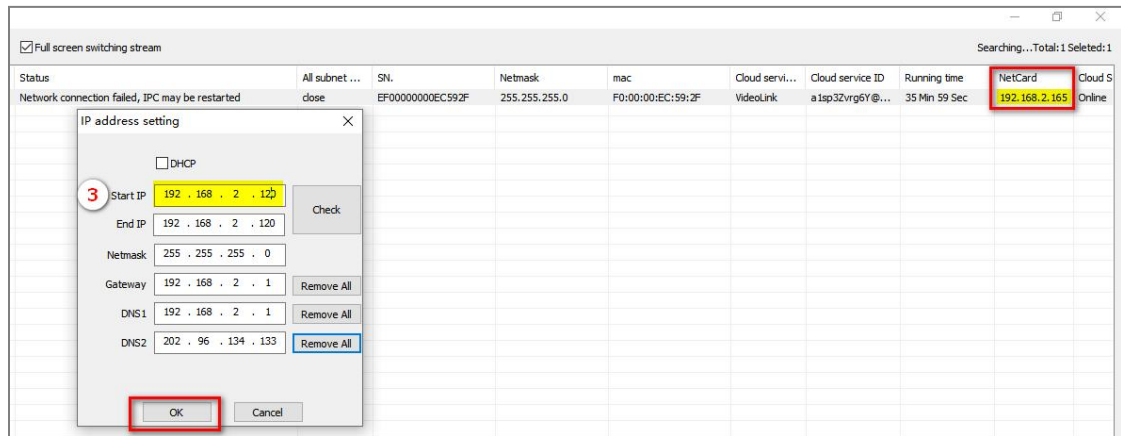
3.1.3 Modify the IP address of the camera to be consistent with the network segment of the PC

**Setting method:** ① Select the **IP address** of the camera;

② Click the **IP Batch Manual Setting** ;



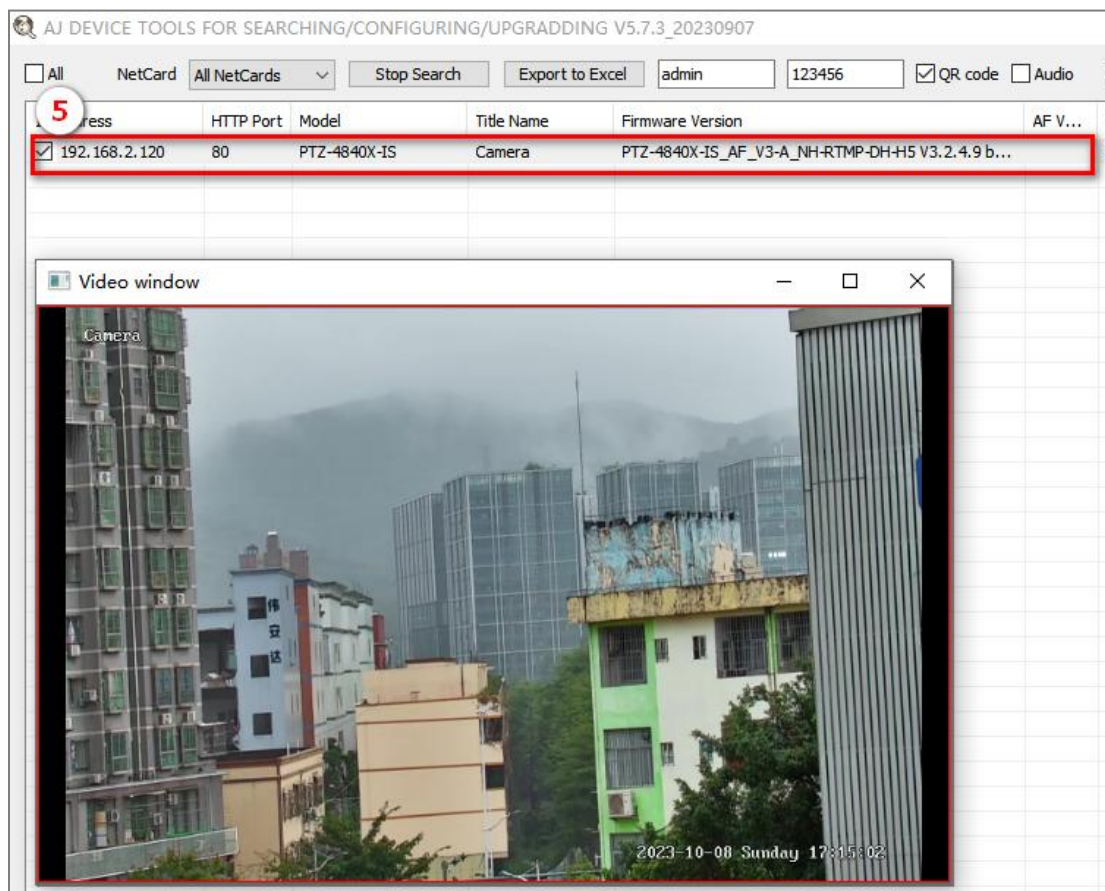
③ Modify the **IP address** of the camera to be in the same network segment as the **IP address** of NetCardr ;



④ the Firmware Version display--Successfully modified;

IP Address	HTTP Port	Model	Title Name	4 Firmware Version	AF V...	Status
<input checked="" type="checkbox"/> 192.168.2.120	80	PTZ-4840X-IS	Camera	PTZ-4840X-IS_AF_V3-A_NH-RTMP-DH-H5 V3.2.4.9 b...		17:08:58 HumanAlarm

⑤ Click the left mouse button continuously to see the image of the cam



⑥ If you want to configure the camera,select the device and click the right mouse button, click to Remote config or Open Web Page

IP Address	HTTP Port	Model	Title Name	Firmware Version	AF V...	Status
192.168.2.120	80	PTZ-4840X-1S	Camera	PTZ-4840X-1S_AF_V3-A_NH-RTMP-DH+	5.13.2.4.9.b	17:09:55 H:mardis@openr:video Human shape detected ..
<div> <div>6</div> <div> Open Web Page  Login  Remote config &gt;  Video window &gt;  One-click play  Only Play Audio  Stop playing  Restart </div> </div>						

## 3.2 Web login

3.2.1. Open the Internet Explorer or click the **Open Web Page** on the tool;

3.2.2. Enter the IP address of the camera into the address bar



3.2.3. Input the **user name** and **password** and click **Login**.

### IP Camera Web Login

admin

.....

Language: English

Login

### **Note:**

The default IP address is **192.168.1.110**. Username: **admin**

Password: **123456**

3.2.4 Enter the preview screen





### Note:

① First login Click “**install Web Plug-in**” when prompted.

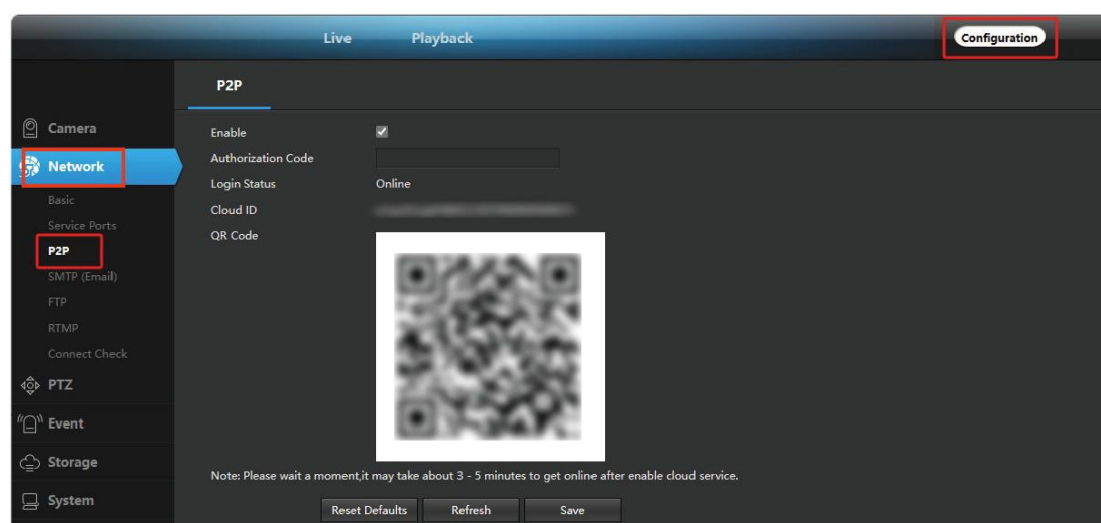


② If failed to install plug-in, download and save the **WEBConfig.exe** to computer, close all browsers then re-install it

③ If there is a delay in video response when accessing remotely, please switch to **Sub Stream** instead. To learn the function of each button, just put the mouse on, it will show screen tips.

### 3.2.5 Connect mobile APP (P2P)

**Steps:** Configuration > Network > P2P.



The mobile APP(Videolink) can access the camera remotely by entering the cloud ID or scanning the QR code

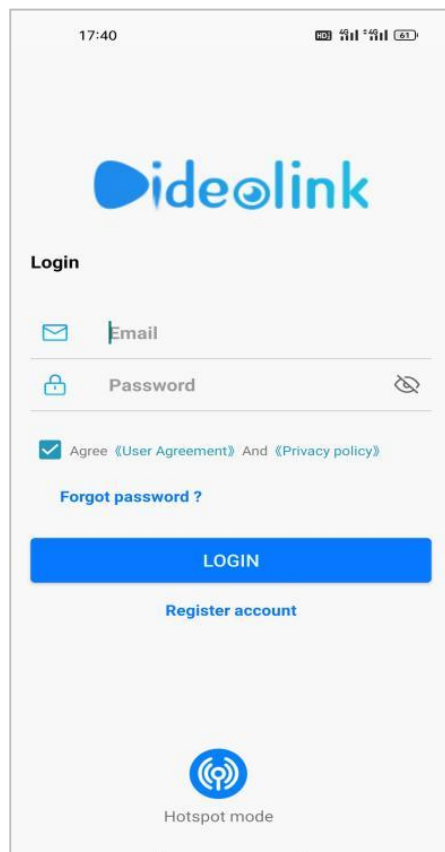
***Add steps:***

Visit the App Store or the Google Play Store to download the **Videolink** app

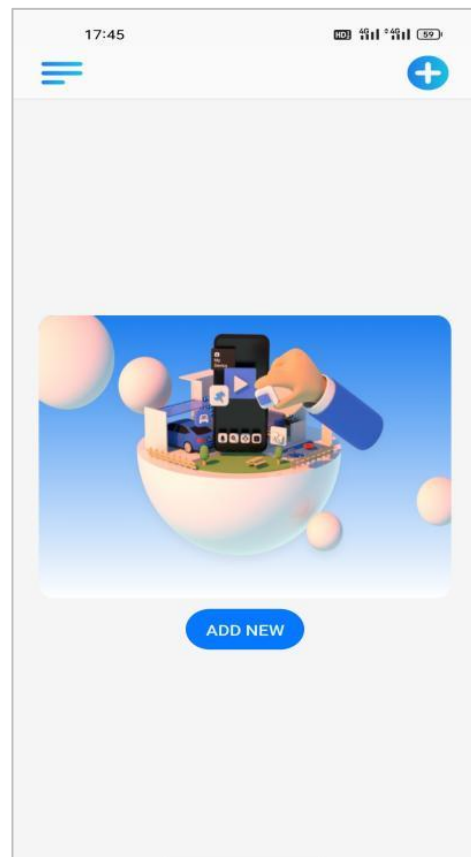
**Scan QR code download**



**Videolink**

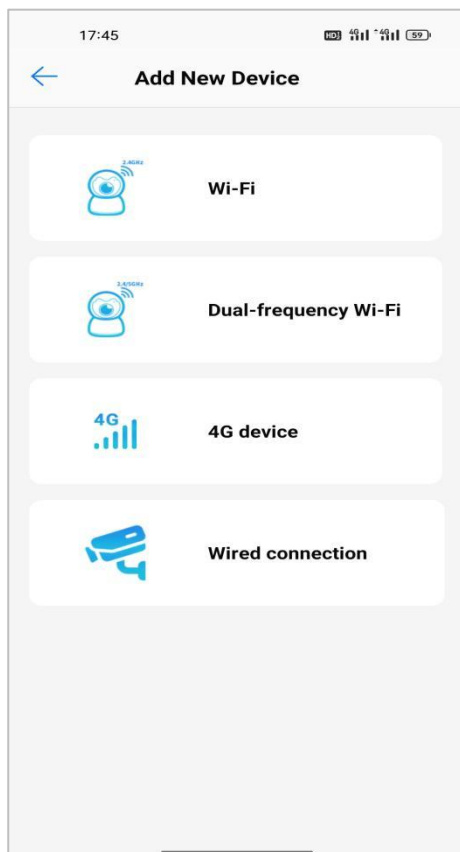


①

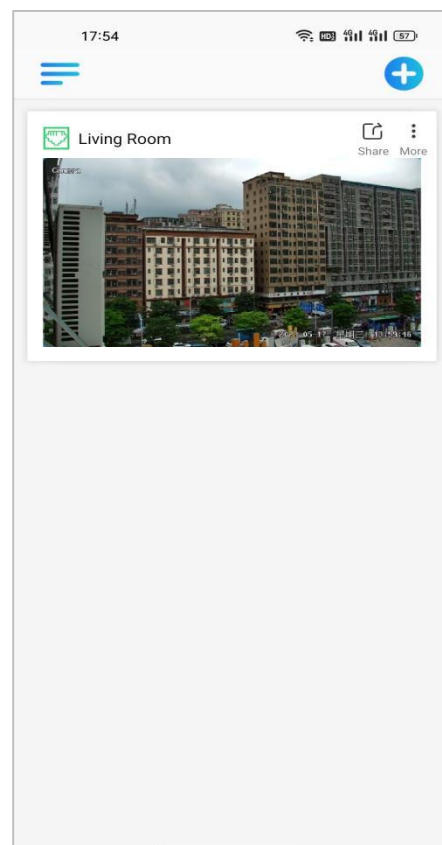


②

- ① For new users, please select “**registered account**”.In the following page, Create Account ,and enter your email or mobile number.Fill in the received verification code.
- ② Login with a registered account,Select to “**ADD NEW**”,Select “**Wired connection**” to get into the scan camera QR code page.




③




④

- ③ Scan the QR code of the **P2P** interface displayed on the web side of the camera-> Choose Name of you Device.The camera has been successfully added to the phone.(Please refer to 3.2.5)
- ④select the camera list to start viewing video.

### Tips:

- ① Select  to check your account profile and configure settings on .

② To share your camera with your friends or another user, click  icon and type in or scan his/her **Videolink** account.

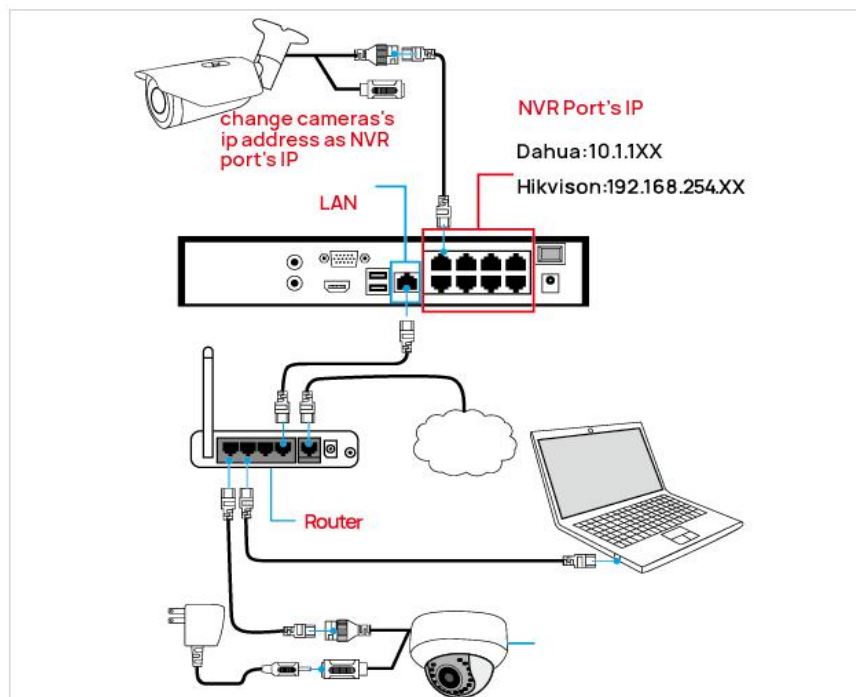
**Note:**

If you can not connect the camera, please check your **Internet connection and verify the IP address, gateway, and DNS setting** in the camera. The Cloud login status should be online, which means the camera has registered to the cloud server.

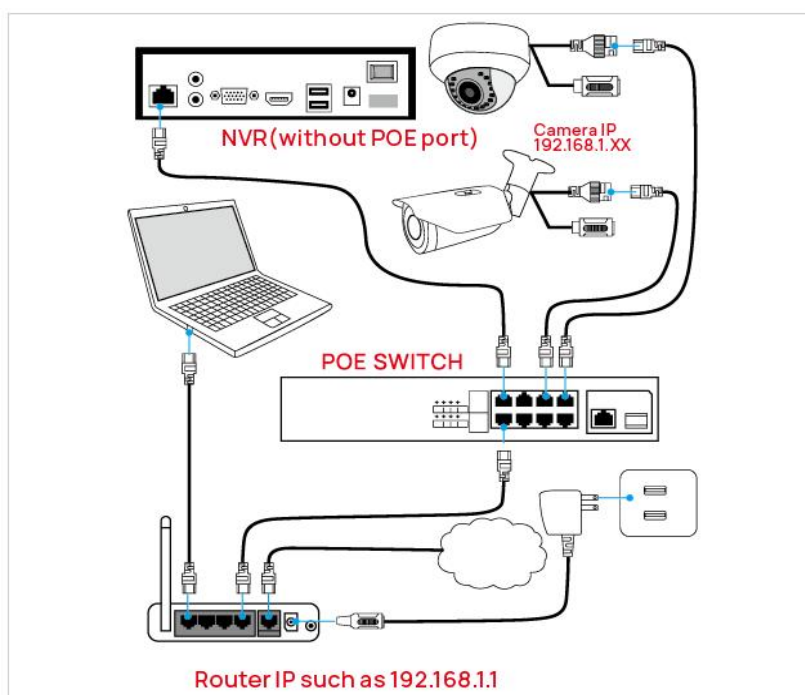
## Chapter 4 Camera Connection to NVR

There are two ways that connect to NVR (two types of NVR)

**① Connect to POE port NVR**



## ② Connect to Without POE port NVR



The camera can work with Hikvision **POE NVR**, Plug and Play, besides, the IP camera also supports standard **ONVIF** protocol, which can be added to third-party video recorder easily with **ONVIF**.

### **Note:**

- ① Before connecting cameras to **NVR** that has **POE switch**, make sure the **NVR** and cameras have valid IP scheme that matches each other. (e.g.: Dahua NVR POE Port's IP Network Segment is **10.1.1.XX**, so the camera IP must be **10.1.1.XX**)
- ② Before connecting cameras to **NVR** that has no **POE switch**, make sure the **NVR**, cameras and the **POE switch** router have valid IP scheme that matches each other. (e.g.: the IP address of router is **192.168.1.1**, so the camera IP must be **192.168.1.XX**)
- ③ Some **POE NVR** models support plug and play (such as Hikvision **POE NVR**), if the Plug-and-Play is not available or not applicable, please Change the adding method to **Manual**

## Chapter5 Frequently Asked Questions

### 5.1 Why can't I open the default IP address 192.168.1.110 via web browser ?

The default IP address may not match your LAN's IP scheme. Check your computer's IP address before accessing the camera. If the IP address does not match the 192. 168. 0.x scheme, please install the IP search tool from the download website to modify the camera's IP address. Make sure the IP address of the camera matches the LAN IP scheme. For example, if the your LAN is 192. 168.1.xxx (192. 168.2.xxx) ..., then set the IP camera to 192. 168.1. 123 (192. 168.2.123) ... and so on. For details about how to change the IP address, please refer to 3.1

### 5.2 How to reset the password ?

The default Username: **admin**, Password: **123456**. If you lost the password or want to reset the camera's setting, please install the search **tool Ajdev** to search the camera IP and click **Batch Reset** button.

### 5.3 How to upgrade the IP camera ?

- ① Ask the supplier for the suitable firmware.
- ② You can use the web browser, Ajdevtools, or PC client to upgrade the camera.
- ③ Go to the **Configuration > System > update**, click **browse** and select the firmware, then click **Upgrade** button and wait for the operation to complete.

### 5.4 How to fetch the RTSP video stream and http snapshot ?

- ① Main Stream : **rtsp://admin:123456@IP address/stream0**
- ② Sub Stream: **rtsp://admin:123456@IP address/stream1**

③Main stream snapshot:

<http://192.168.20.131/snapshot.cgi?stream=1&username=admin&password=123456>

④Sub Stream snapshot:

<http://192.168.20.23/snapshot.cgi?stream=0&username=admin&password=123456>

## 5.5 Why does the NVR not show image after adding your IP camera ?

- ①Make sure you selected the right protocol and enter the correct username and password when adding the cameras.
- ②Make sure the NVR and IP camera are the same IP segment.(eg. NVR:**192.168.1.x**, and IP camera:**192.168.1.y**).
- ③Try changing the camera encode mode to **H.264** if the NVR can't support **H.265**. (Configuration -> Camera -> Video > Encode mode: H.264)