

POE Security Camera System

Quick User Guide



Table of Contents

1. Camera	1
1.1 Camera Features	1
1.2 Device Initialization	1
1.3 Modify IP Address	7
1.4 Login WEB Interface	7
2. Camera Setup	9
3. Connect cameras to NVR	13

3.1 System Topology (reference only)	13
3.2 Dahua NVR Configuration	14
3.3 NVR Configuration with ONVIF (Take Hikvision NVR as an example).....	19
4. Mobile Phone APP	26
4.1 Download and install APP	26
4.2 Add Device	26

1.Camera

1.1 Camera Features:

- ✓ 4MP/6MP POE IP camera dome/bullet, night vision, smart detection, built-in Mic optional, SD storage optional, motorized VF lens optional, 4X/5X zoom optional
- ✓ Plug and Play with Dahua POE NVR, can also work with ONVIF, easy access to third-party NVR and video surveillance system
- ✓ Management Software: Smart PSS, GDMSS, IDMSS, Easy4ip ,also easy setup in Blue Iris and VLC.
- ✓ Easy P2P monitoring via smart phone APP(Android/IOS)
- ✓ IP67, IK10, Metal Body
- ✓ Power Supply: DC 12V or POE 803.2a.f

Note:

1.OEM model POE camera customized from dahua WITHOUT BRAND LOGO ,don't support firmware update. you can also add the camera to your security system referencing dahua official website guidance.

2.Default IP :192.168.1.108. Default user name and password are both admin. In order to enable the camera to get access to the network smoothly, please set the useable IP segment reasonably according to the actual network environment.

1.2 Device Initialization

Some models of cameras have been initialized after factory testing (such as HDW4631C-A, HDBW4631R-S, HDBW4631R-ZS, HDBW4631R-AS, HDW4631C-A, HFW4631H-ZSA, HFW4431R-Z and HFW4631F-ZSA. Some model cameras are uninitialized(such as hdw4433C-A, HDBW4433R-ZS, HFW4433M-I2).

Step1: Install ConfigTool

Firstly open the official website :<https://www.dahuasecurity.com>, then select the detailed pages "Support" > "Download Center">"Tools" > "Maintenance Tools" (download the ToolBox for Microsoft system, you can also directly download the Config Tool for Mac system . Download the ToolBox for an example) > "Download the ToolBox" > Click the ""Install" to install the Config Tool. (See Figure 1-1 - Figure 1-5)

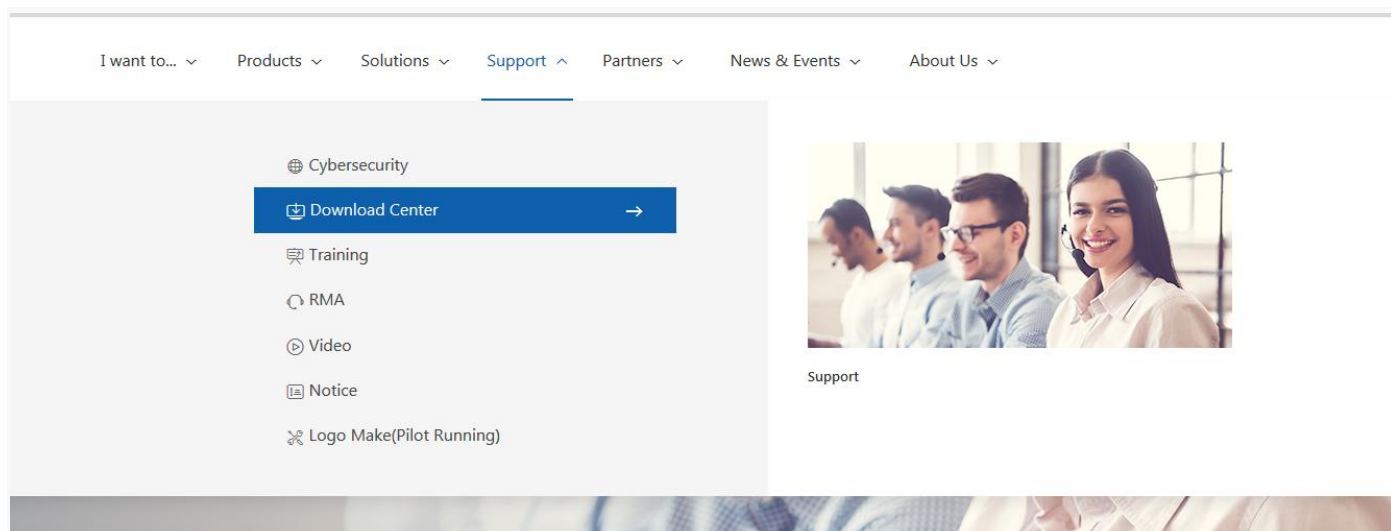


Figure 1-1

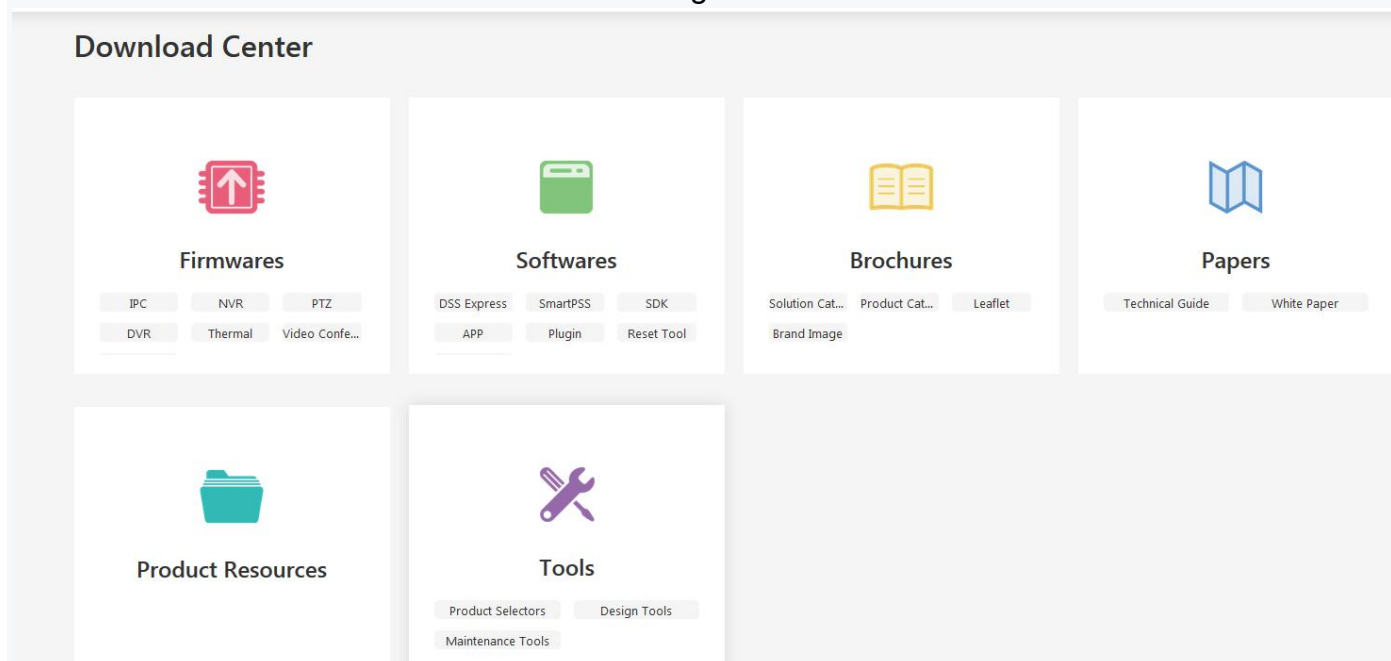


Figure 1-2

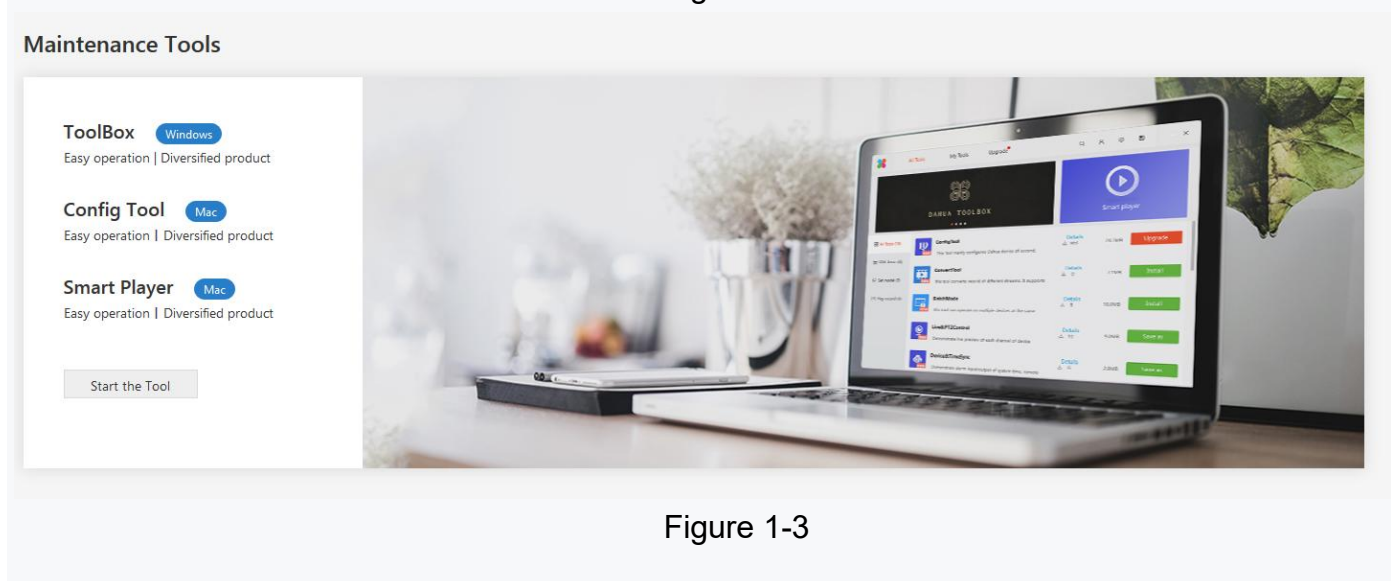


Figure 1-3

Maintenance Tools

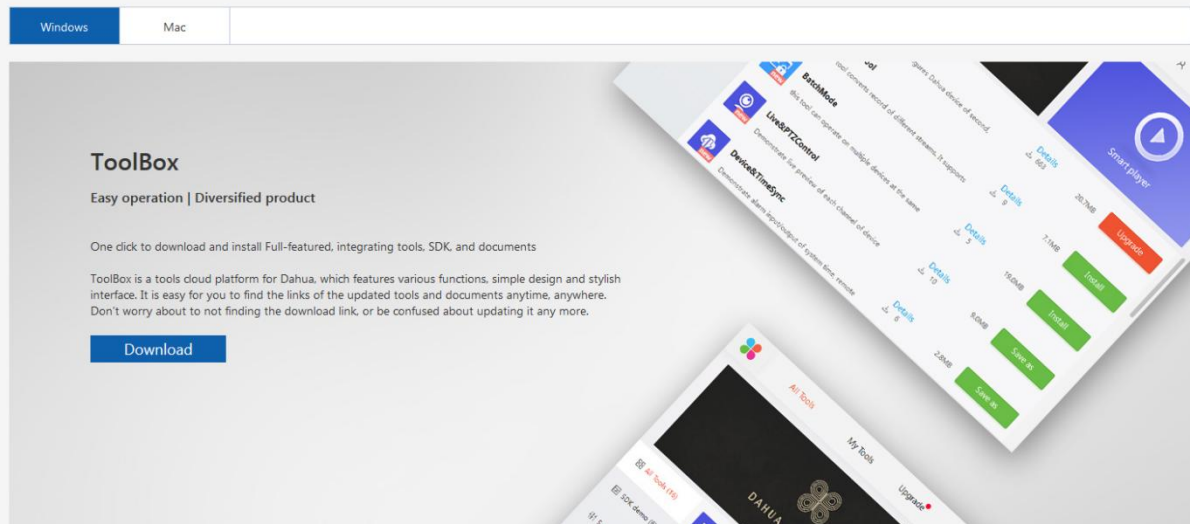


Figure 1-4

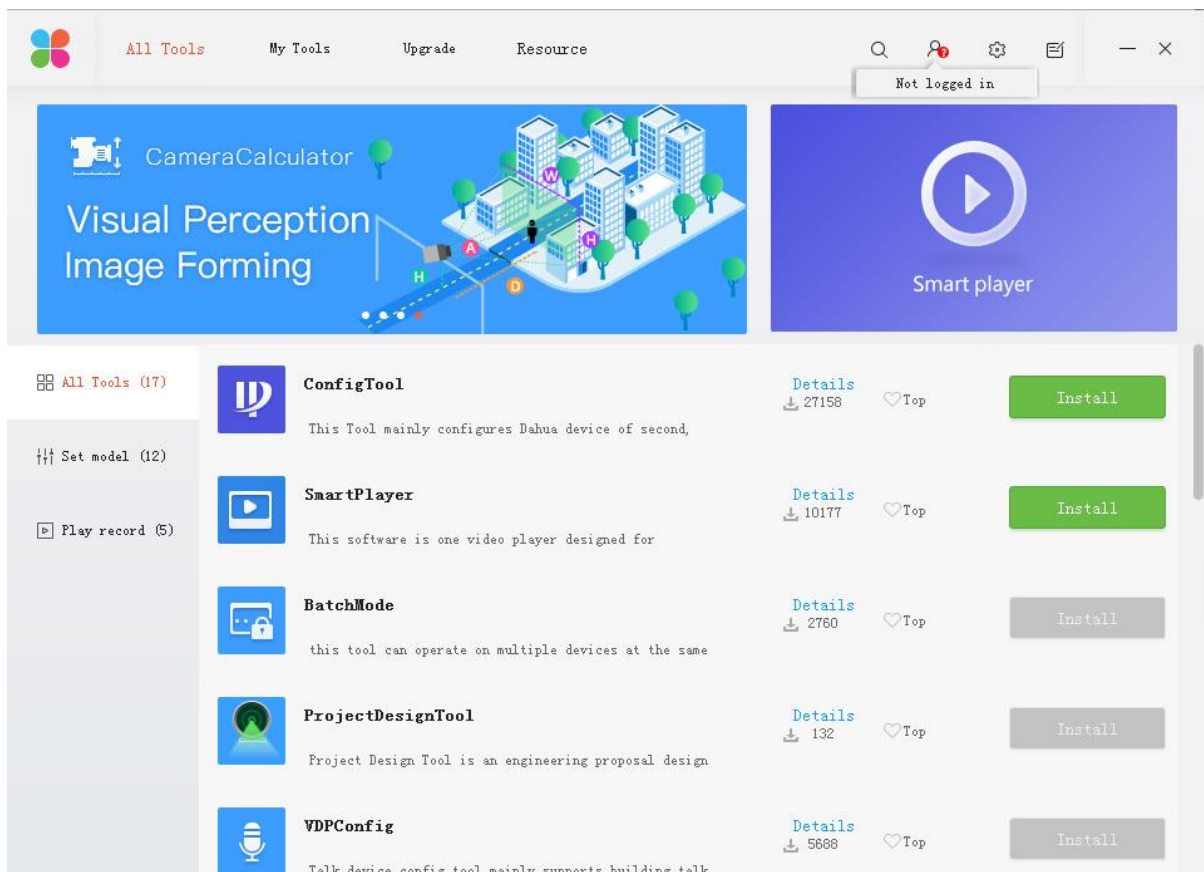


Figure 1-5

Step2:Initialize Camera

Connect the camera to the LAN (local area network) > Open the the ConfigTool to search for the devices that need to be initialized > Select the device and Click the “initialize” > Enter your new password and confirm the password you have entered > Enter a email address to reset the password in case you forget the initial password you have set > Click the“Next”> Click the “ OK ” ,then the camera start being been initialized> Wait a few seconds to complete the initialization. (See Figure 1-6 - Figure 1-10)

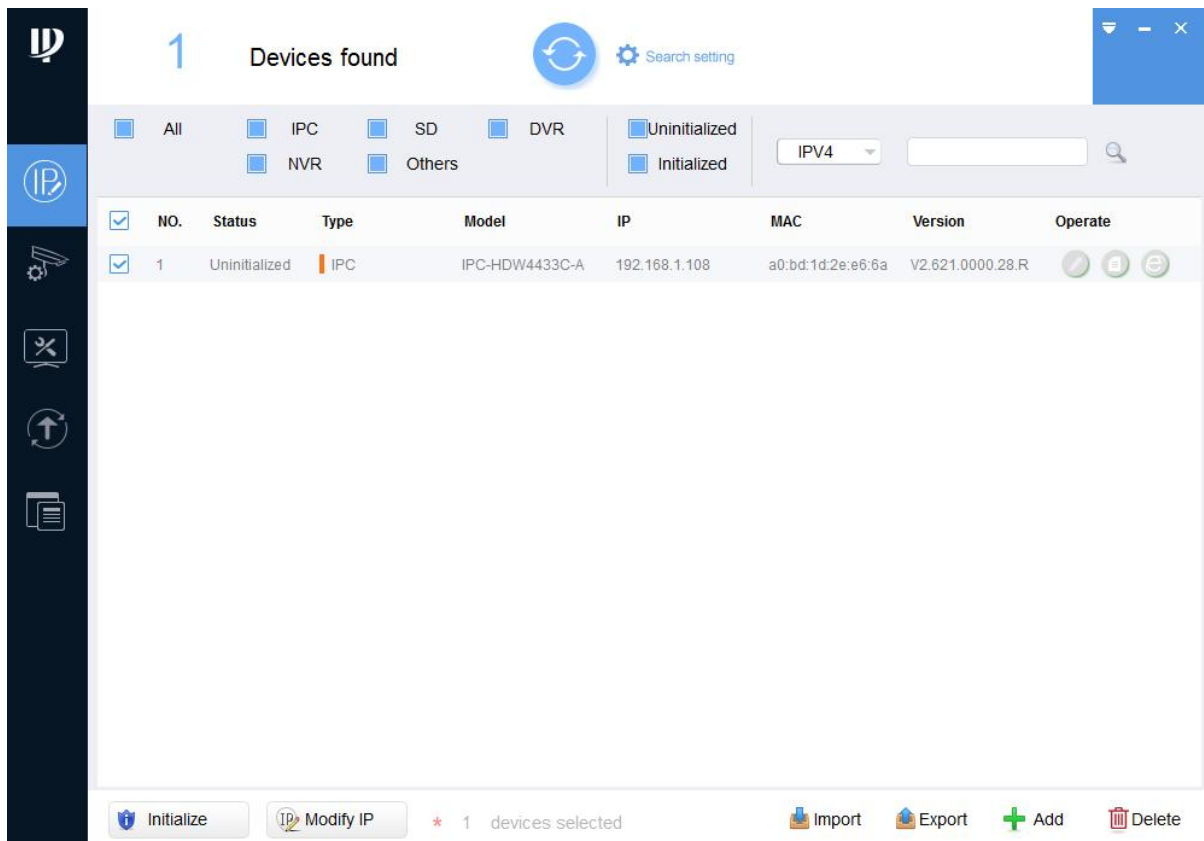


Figure 1-6

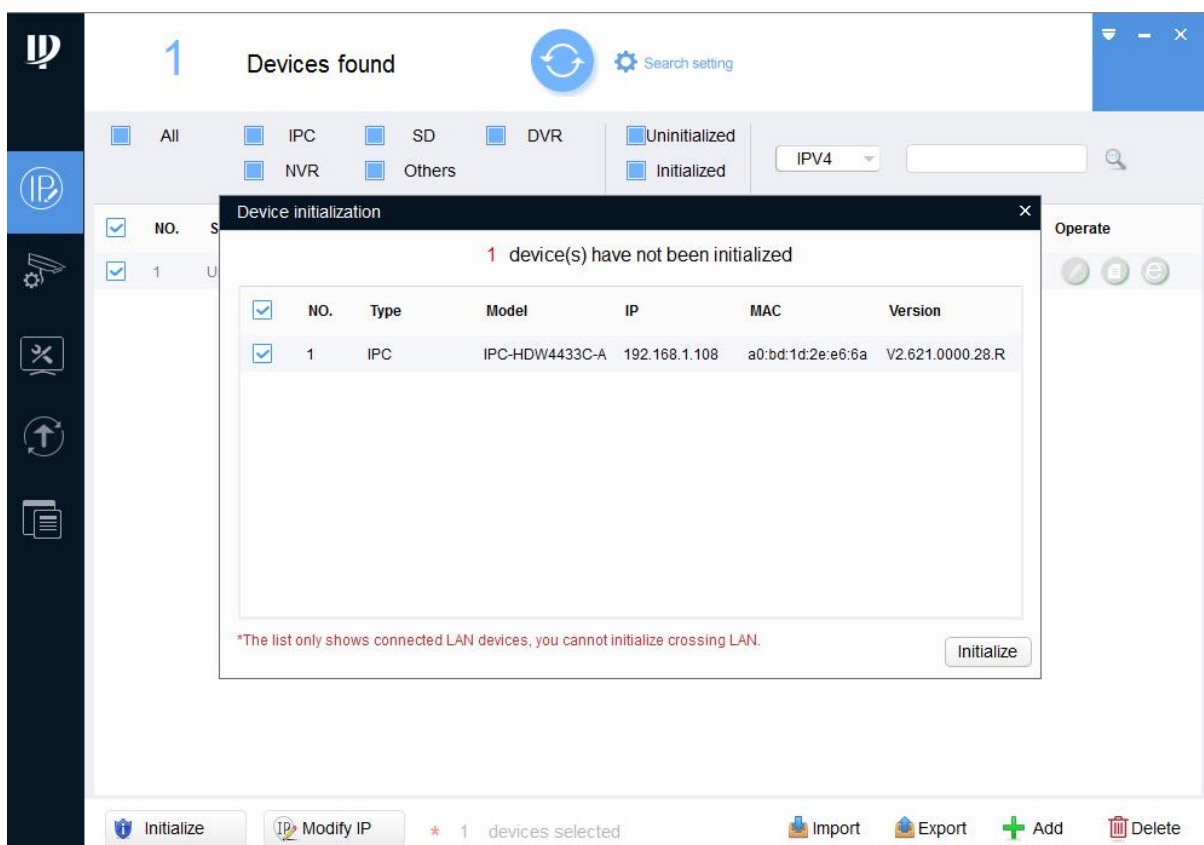


Figure 1-7

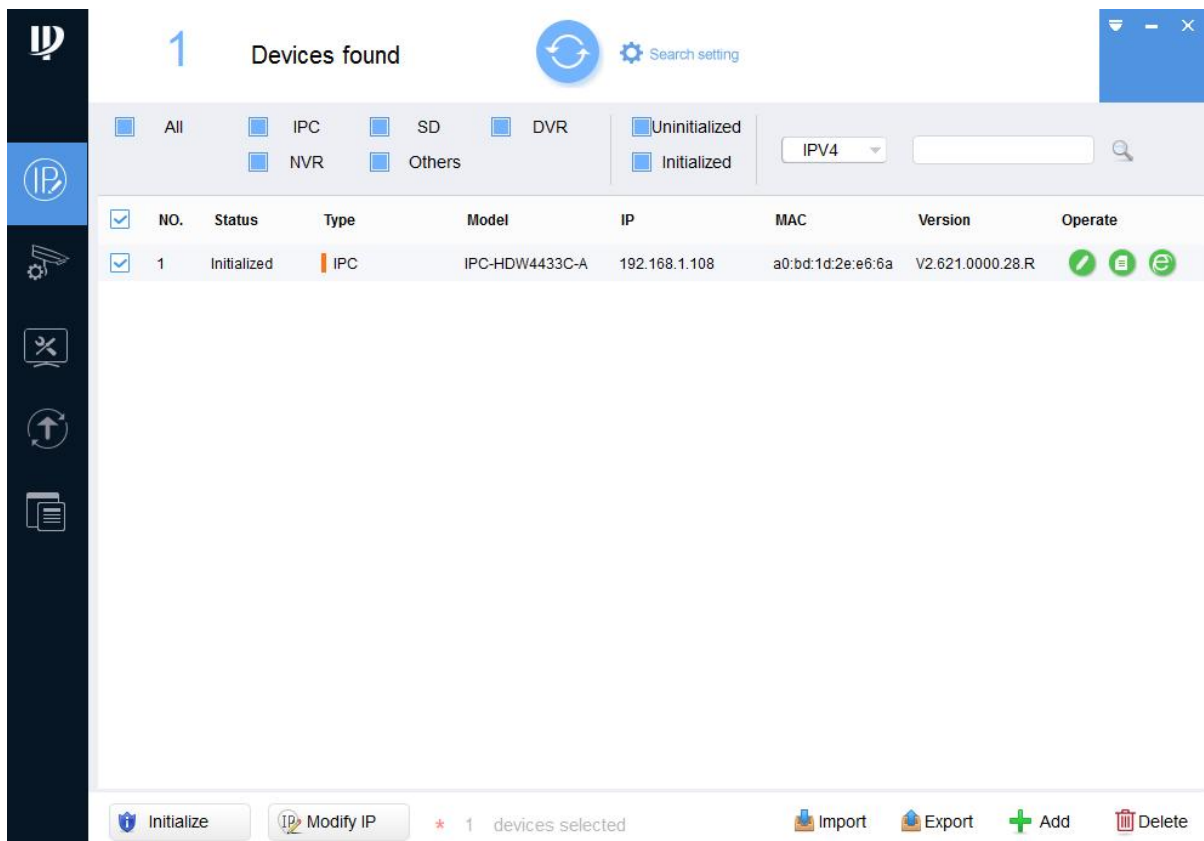


Figure 1-10

Note:

The following 2 lines of red warnings show the same IP conflict in the same LAN, you have to modify different IP addresses for the same IP devices . (See Figure 1-11)

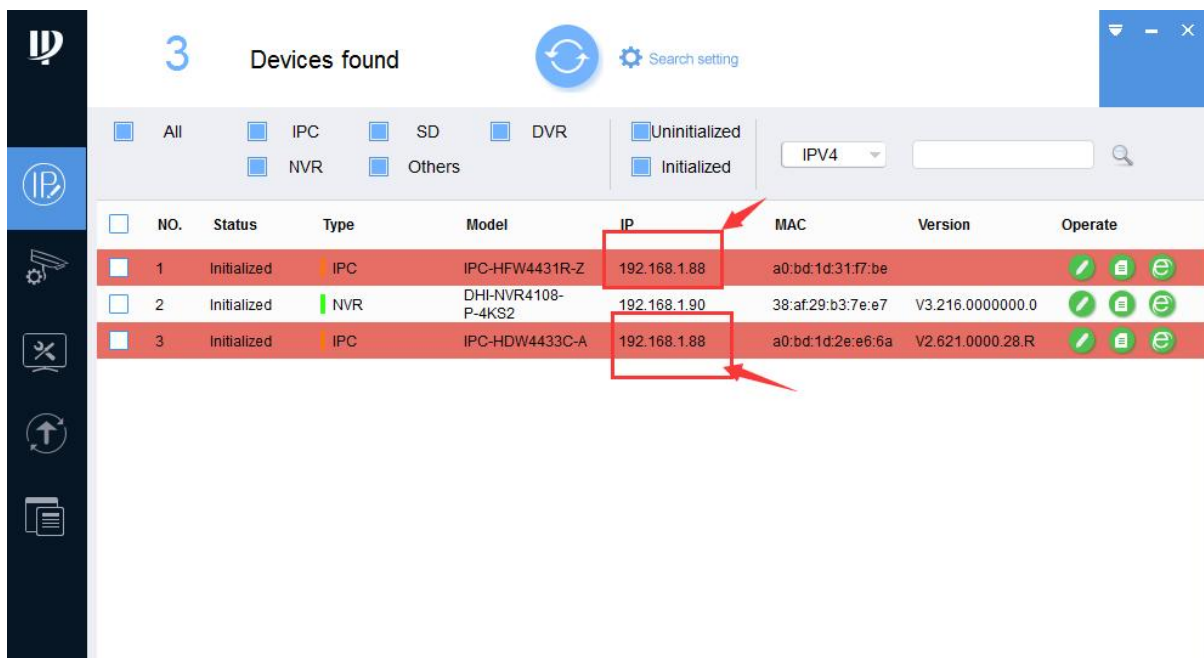





Figure 1-11

1.3 Modify IP Address

Steps: Select the devices that the IP need to be modified > Select the “Search Setting”

 and enter the camera's user name and password > Click “Modify IP”
“ or  > Select the “Static”, and enter the start IP, subnet mask and gateway according to your LAN > Click “OK” to complete the IP modification. (See Figure 1-12)

Note:

You can set the DHCP mode if the local network can support the DHCP service, the device will automatically be assigned a IP address from the DHCP server.

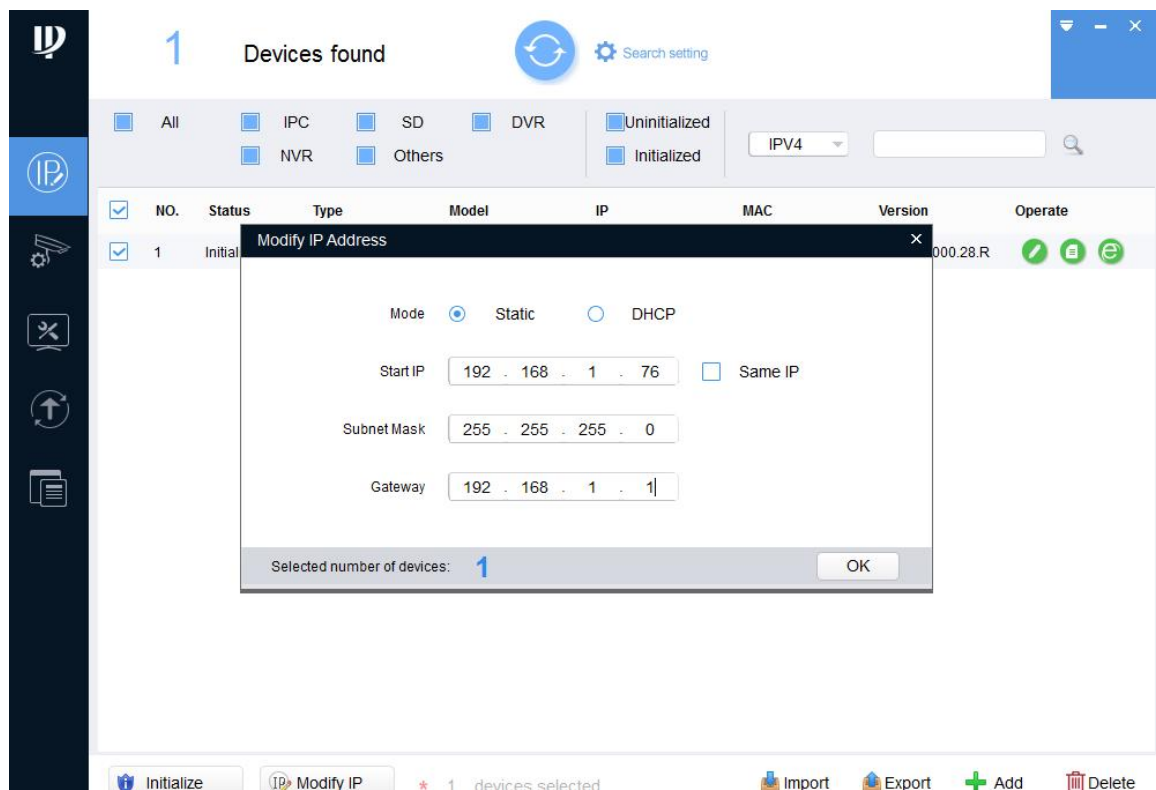


Figure 1-12

1.4 Login WEB Interface


Steps: Open IE browser, enter the camera’s IP address you have set Or click  to quickly open IE interface > Enter username and password and click “Login”.> Download the plug-in when you log in for the first time > When plug-in installation is completed, refresh existing web pages or re-login, then the captured video image will be displayed. (See Figure 1-13 - Figure 1-15)



Figure 1-13

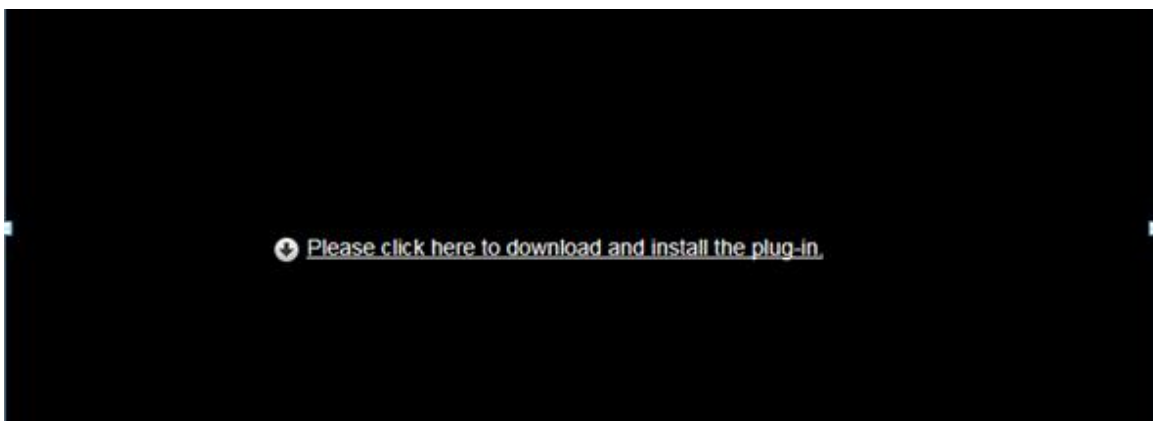


Figure 1-14

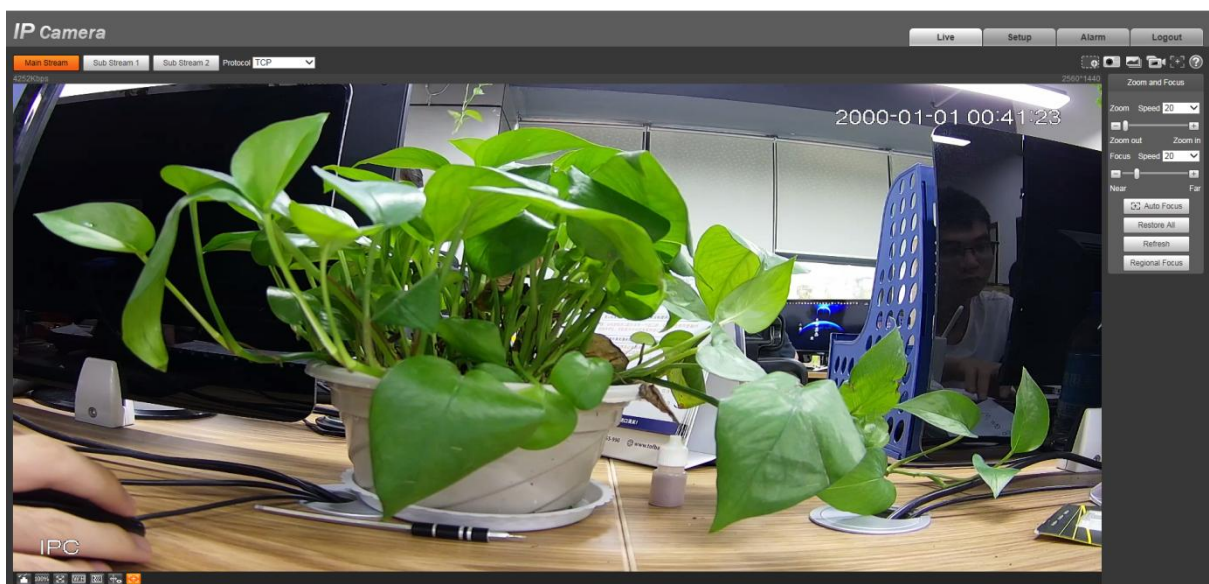


Figure 1-15

2.Camera Setup

< Conditions >

Select “Setup” > “Camera” > “Conditions” > ,the system will display the settings for the camera conditions. (See Figure 2-1)

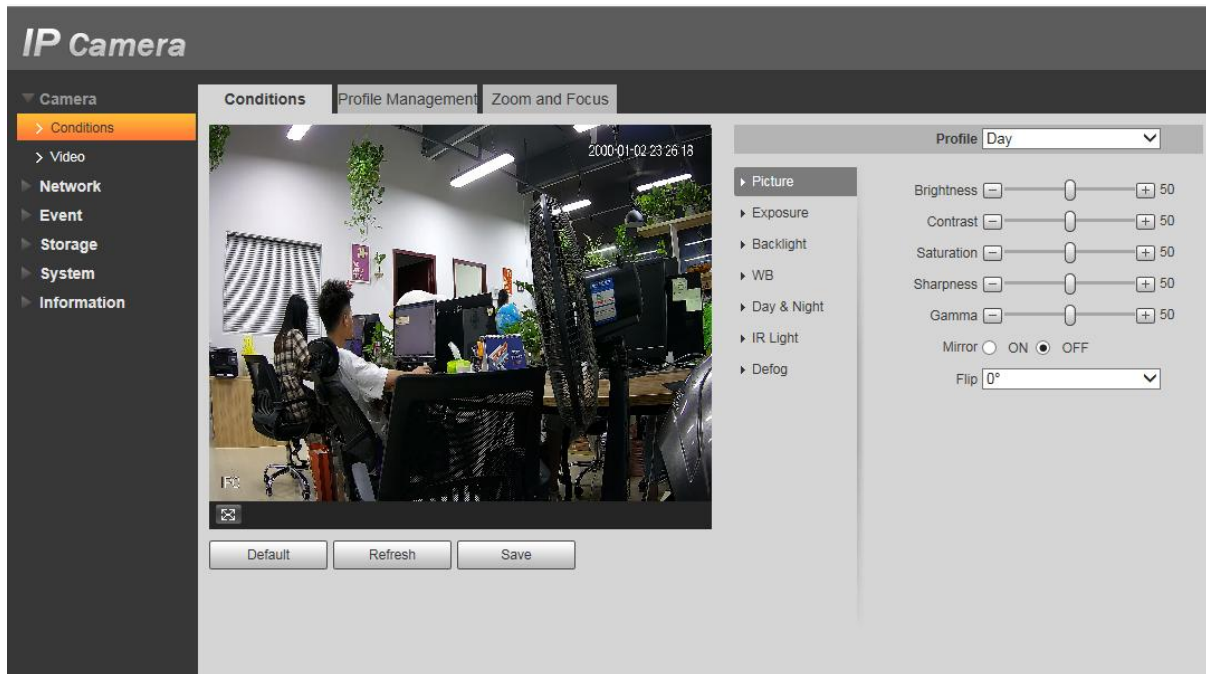


Figure 2-1

< Zoom and Focus >

Note:

Only motorized vari-focal devices support focus and zoom function, like IPC-HDBW4431R-ZS, IPC-HFW4431R-Z , IPC-HDBW4631R-ZS, IPC-HFW4631H-ZSA)

Select “Setup” > “Camera” > “Conditions” > “Zoom and Focus” ,the system will display the zoom and focus settings. (See Figure 2-2)

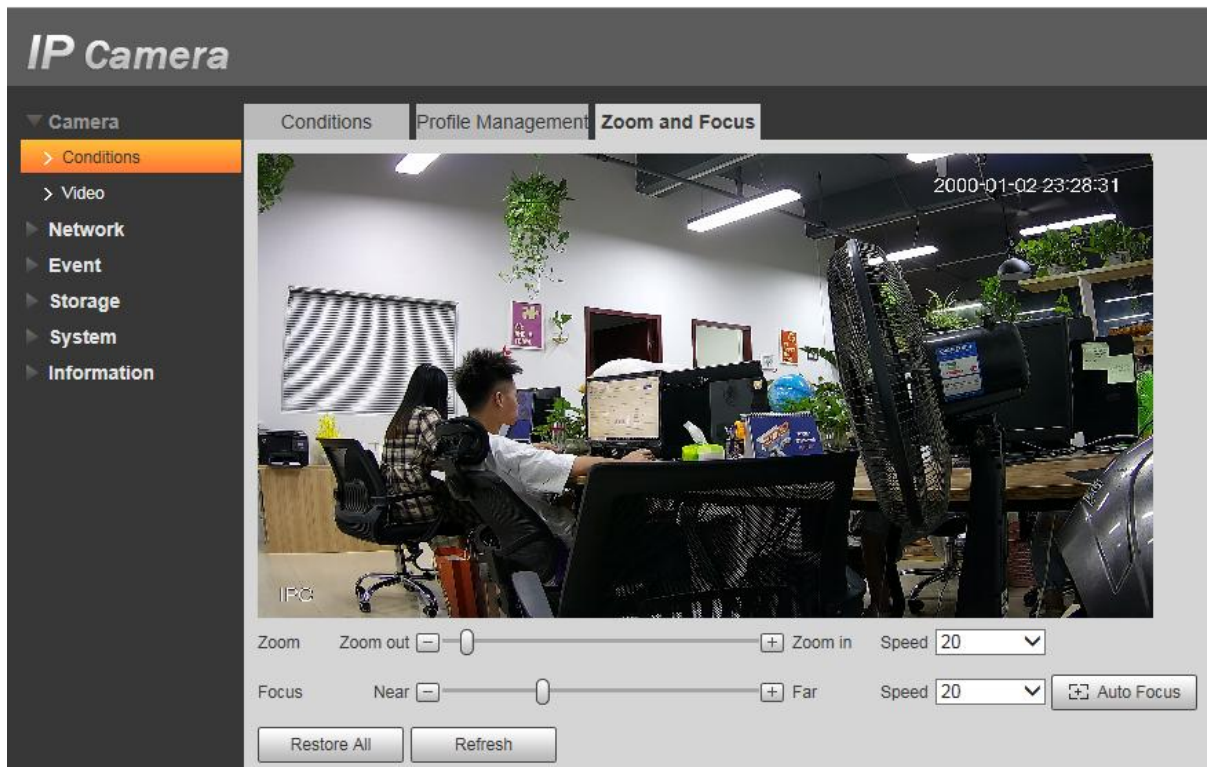


Figure 2-2

< Video >

Select “Setup” > “Camera” > “Video” , the system will display the video setting interface.
(See Figure 2-3)

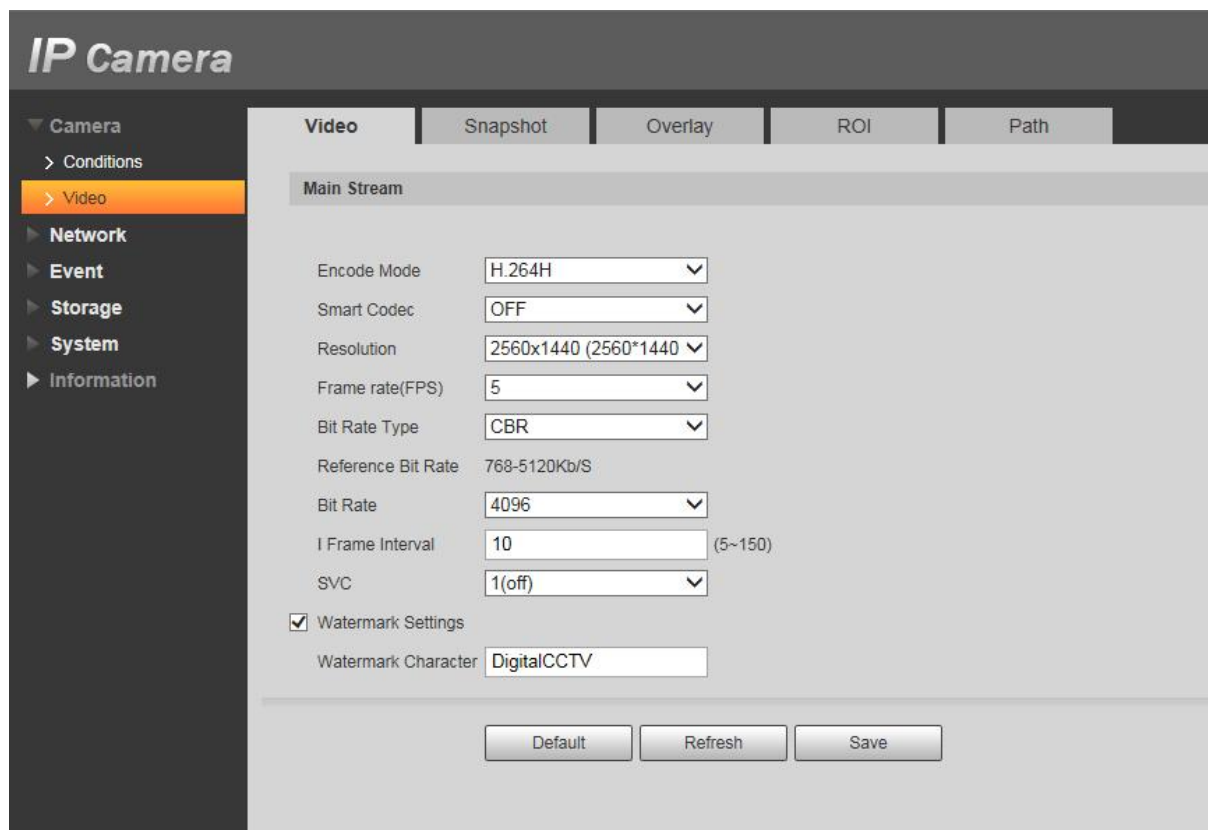


Figure 2-3

< Motion Detection >

Select “Setup” > “Event” > “Video Detection” > “Motion Detection” > “Area Setup”, the system will display the “Motion Detection” setting interface. (Firstly select the “ Enable” to enable the motion detection function). (See Figure 2-4 - Figure 2-5)

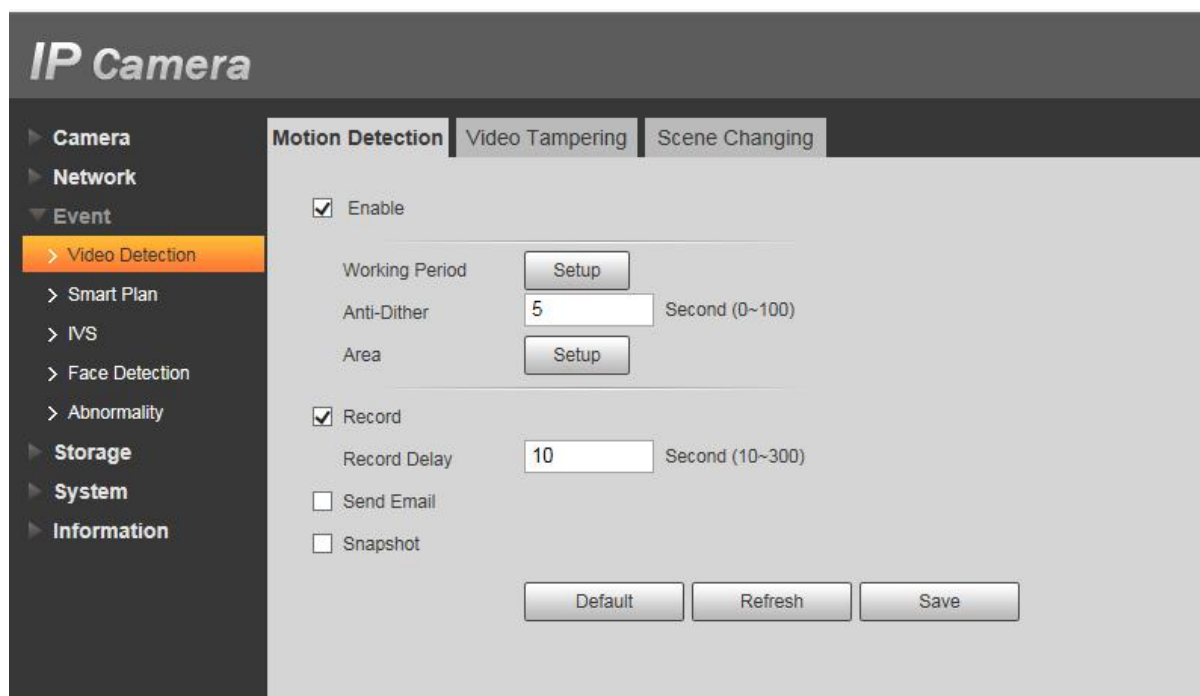


Figure 2-4

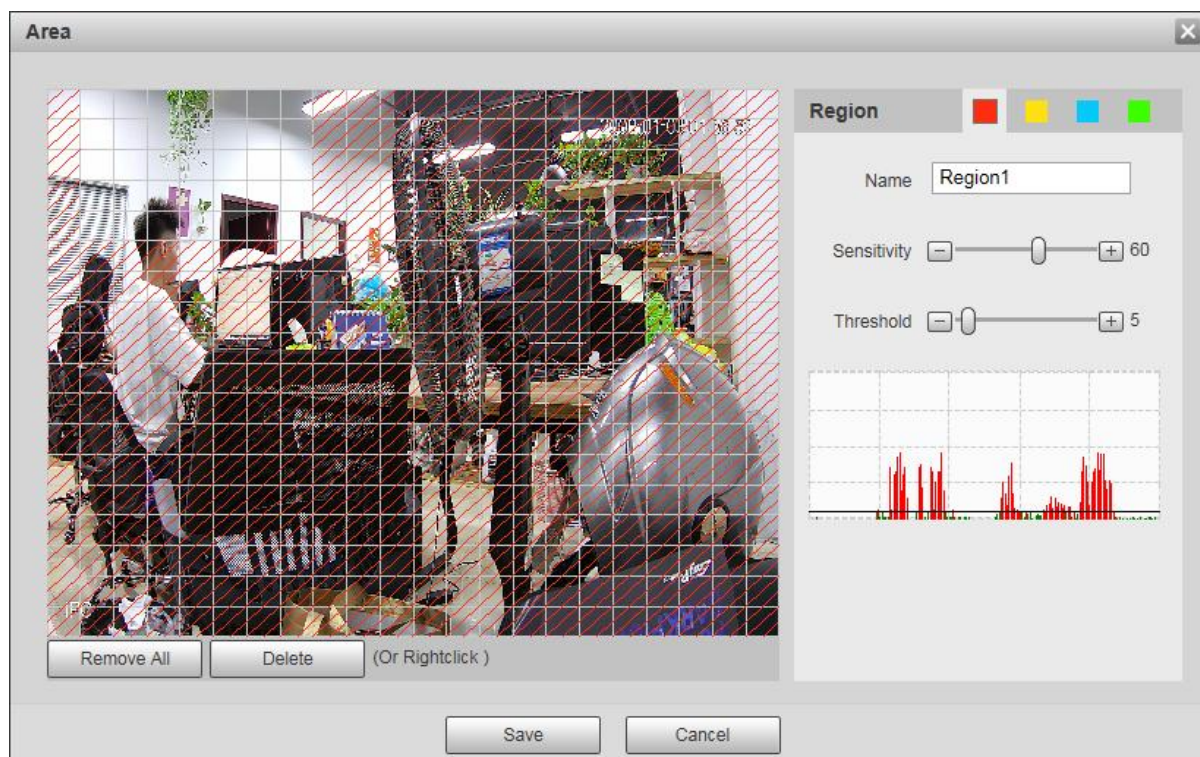


Figure 2-5

Note:

1. Different colors stand for different areas; can set different colors for different detection area.
2. The red line in the Oscillogram means triggering motion detection; green line means not

triggering motion detection.


< Smart Plan >

Select “Setup” > “Event” > “Smart Plan”, the system will display the “Smart Plan” setting interface.
(Firstly enable the smart plan before making the settings for IVS, Face Detection and other smart functions). (See Figure 2-6)



Figure 2-6

< IVS >

Select “Setup” > “Event” > “IVS”, the system will display the “IVS” setting interface. Click “ ” to set rule name and select the rule type. (See Figure 2-7)

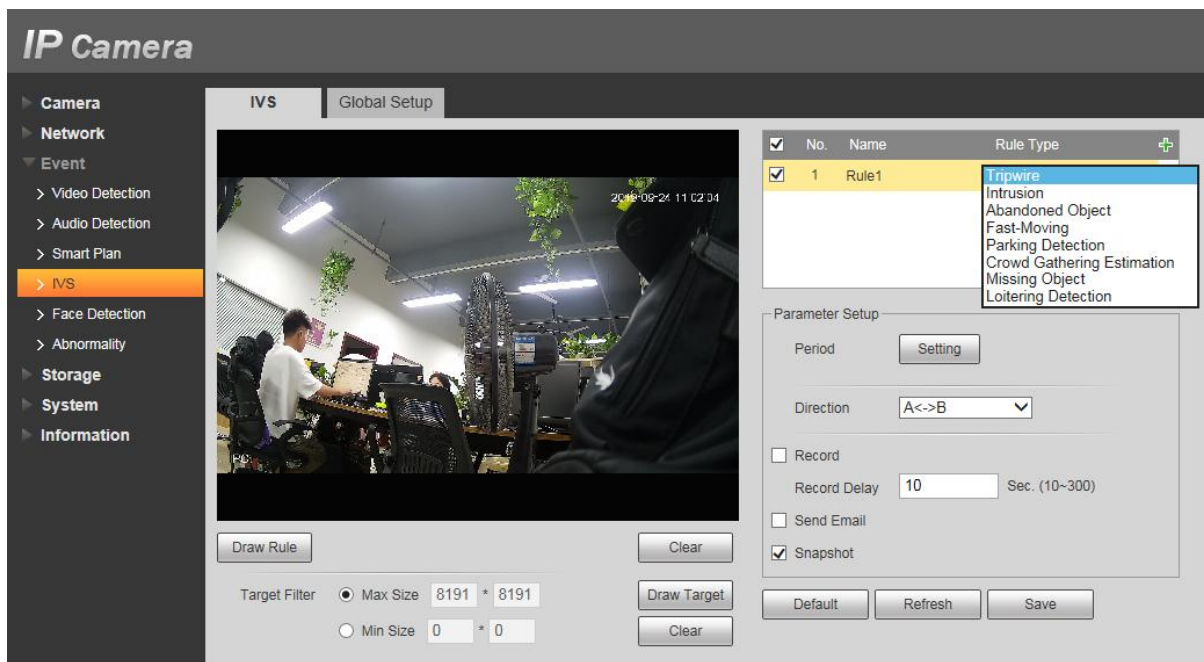


Figure 2-7

3.Connect cameras to NVR

3.1.System Topology (reference only)

3.1.1 NVR without POE (See Figure 3-1)

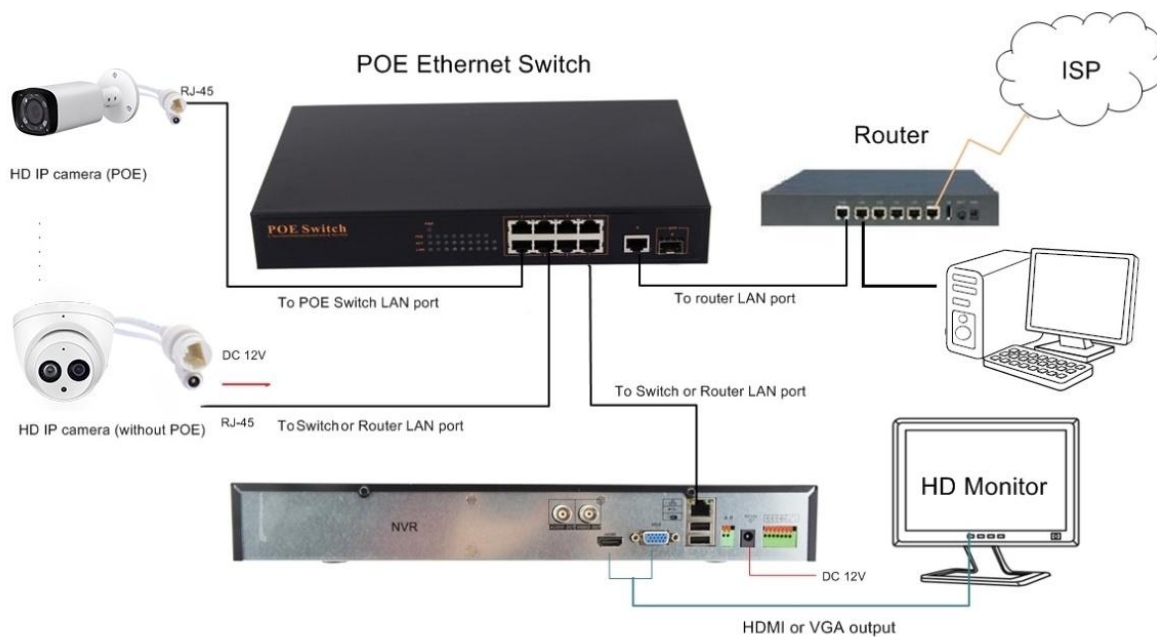


Figure 3-1

3.1.2 NVR with POE (See Figure 3-2)

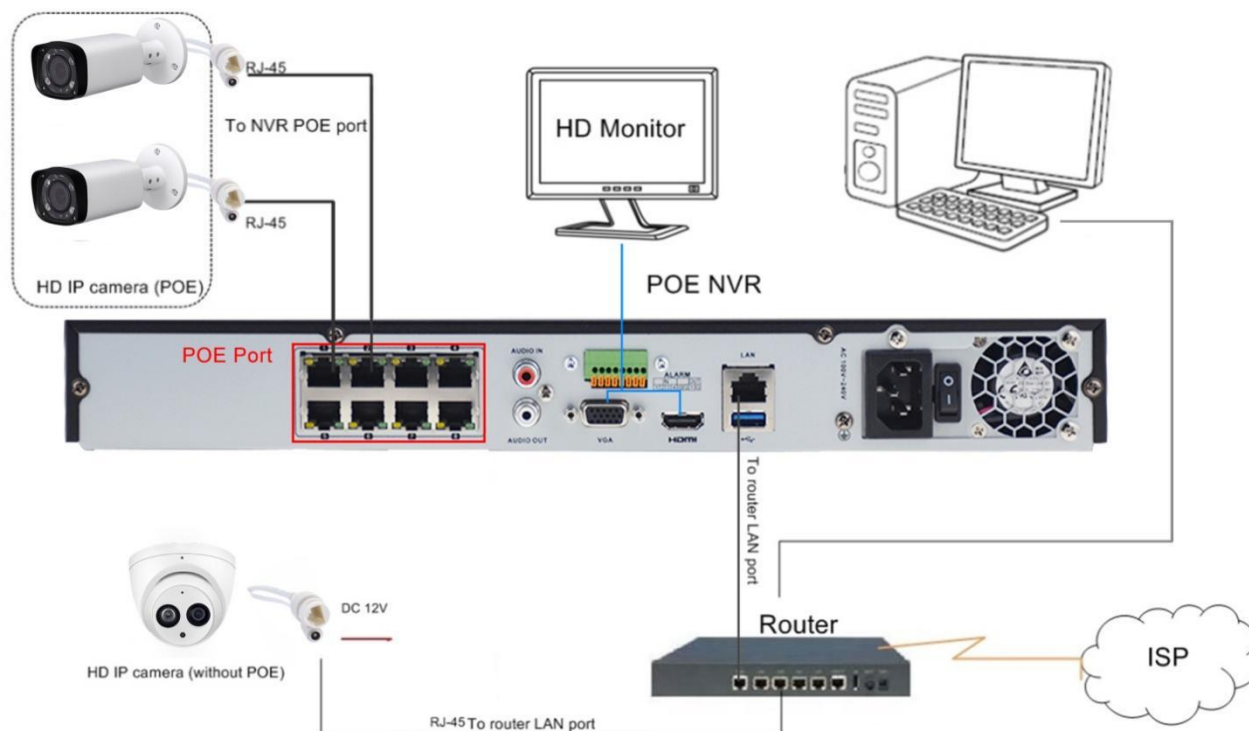


Figure 3-2

The camera can work with Dahua POE NVR, Plug and Play, besides, the IP camera also supports standard ONVIF protocol, which can be added to third-party video recorder easily with ONVIF.

Note:

- ① Before connecting cameras to NVR that has POE switch, make sure the NVR and cameras have valid IP scheme that matches each other. (e.g.: Hikvision NVR POE Port's IP Network Segment is 192.168.25.XX, so the camera IP must be 192.168.25.XX)
- ② Before connecting cameras to NVR that has no POE switch, make sure the NVR, cameras and the POE switch router have valid IP scheme that matches each other. (e.g.: POE switch router's IP is 192.168.1.1, so the camera IP must be 192.168.1.XX)
- ③ Some POE NVR models support plug and play (such as Dahua POE NVR), if the "Plug & Play" feature is not available or not applicable, please add camera manually.

3.2 Dahua NVR Configuration

3.2.1 Dahua POE NVR Configuration, Plug and Play

Steps1: Just play and plug, connect cameras to NVR's POE Ports, and then connect monitor and NVR via VGA or HDMI ports, power for those devices.

Steps2: The camera will automatically match the IP address of the NVR's POE switch , refresh few seconds, video is showing, adding camera successfully. **IP address of NVR's POE SWITCH : 10.1.1.X (65)** .(See Figure 3-3 - Figure 3-5)

CAMERA

Camera List

Device Status

Firmware

Update

Image

Overlay

Encode

Camera Name

PoE

Search Device

Plug and Play

H.265 Auto Switch

Initialize

All

Not Initialized

Not Auto Connected

Filter

			Live	Status	IP Address	Manufacturer	Type	MAC Address	Port	
3		Modify IP								
1				✓	192.168.1.21	ONVIF	PTZ-4840X-IS	00:00:00:00:00:00	80	P1
2				✓	192.168.1.34	ONVIF	YM800SV2_YPTZN_Y3	00:00:00:00:00:00	80	YK
3				✓	192.168.1.217	ONVIF	VK608Q	80-7c-62-3c-be-2e	80	VK

Add

Manual Add

Modify IP

Change Camera Login Password

Added Device

Camera Linked Info

Channel	Edit	Delete	Status	IP Address	Port	Device Name	Remote CH No.	Camera Name
D1			●	10.1.1.65	Port 1	4D0154BPAG58288	1	IPC

Delete

Import

Export

Remaining Bandwidth/Total Bandwidth: 83.62Mbps/88.00Mbps

Figure 3-3

NETWORK

TCP/IP

Port

DDNS

Email

Register

Switch

P2P

IP Address

Subnet Mask

Default Gateway

10 . 1 . 1 . 1

255 . 255 . 255 . 0

10 . 1 . 1 . 1

Apply

Back

Figure 3-4

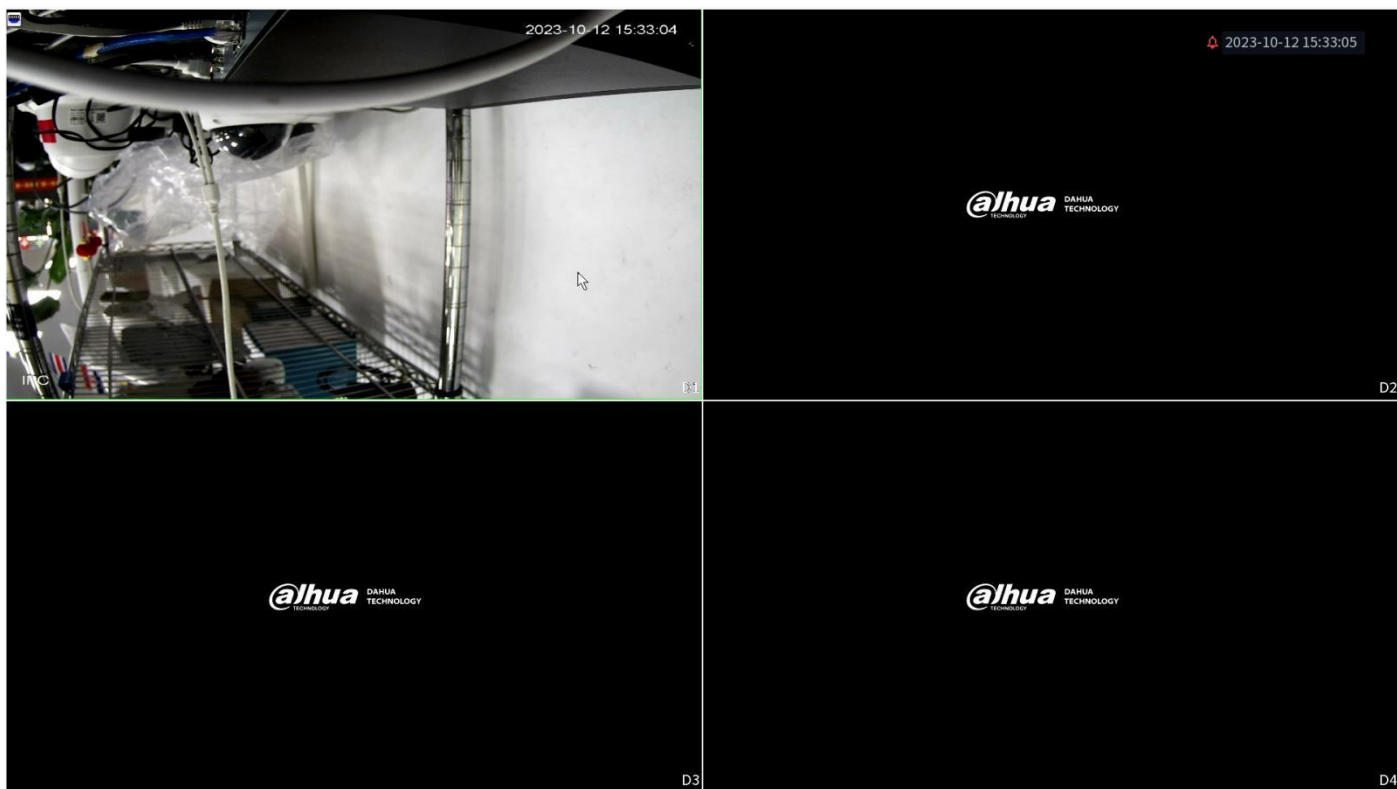


Figure 3-5

3.2.2 Dahua NVR (**WITHOUT POE**) Configuration, adding camera manually

Steps1: Connect cameras to POE switch or router 's Ports ,and then connect monitor and NVR via VGA or HDMI ports, power for those devices .**Confirm the the LAN is available, and make sure the NVR , cameras and the POE switch router have valid IP scheme that matchs each other.(e.g.: POE switch router router's IP is 192.168.1.1, so the camera and NVR's IP must be 192.168.1.XX).** (See Figure 3-6)

Step2: Access NVR's UI page > Select"Main Menu" > "SETTING">"Camera" > "REGISTRATION" (See Figure 3-7)

Step3: Select "Manual add" > Enter camera's IP address and password > Click "OK" > Refresh few seconds, video is showing, adding camera successfully. (See Figure3-8 - Figure3-10)

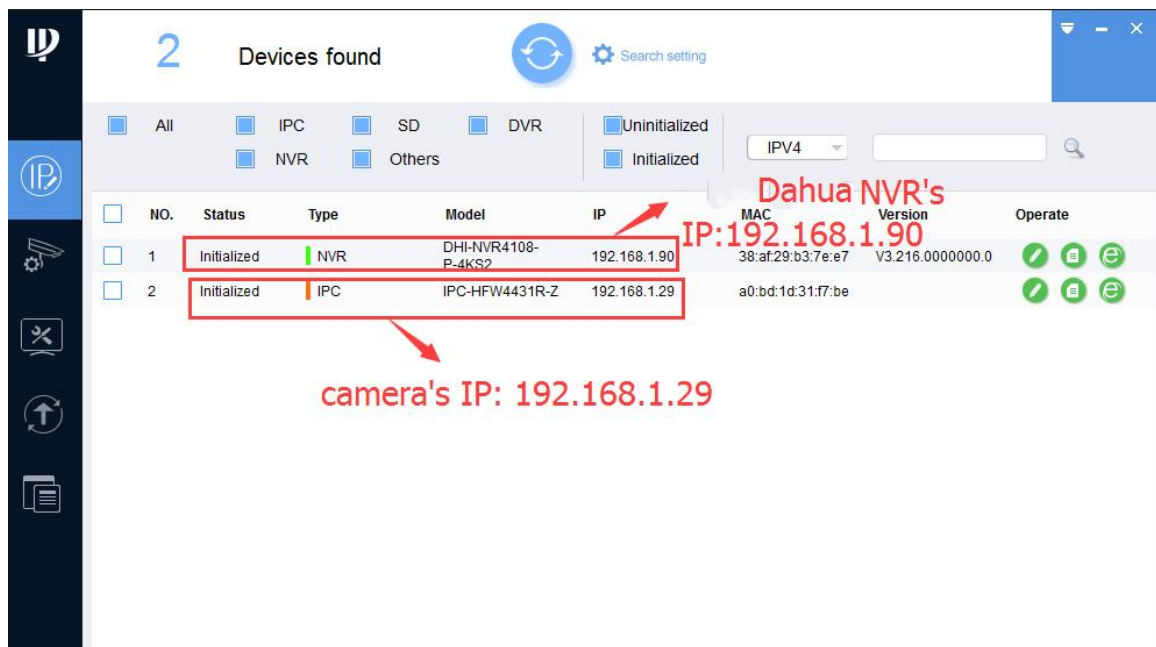


Figure 3-6

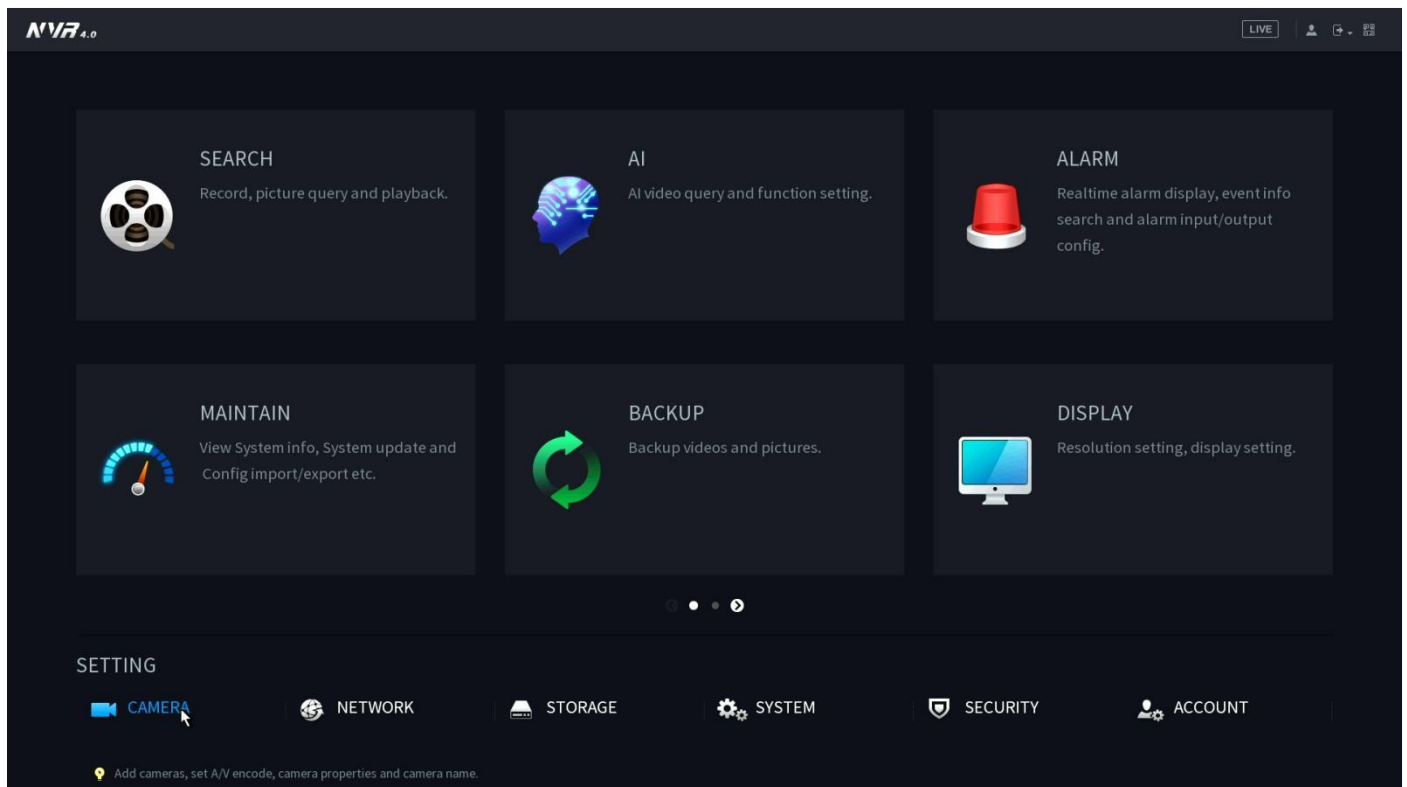


Figure 3-7

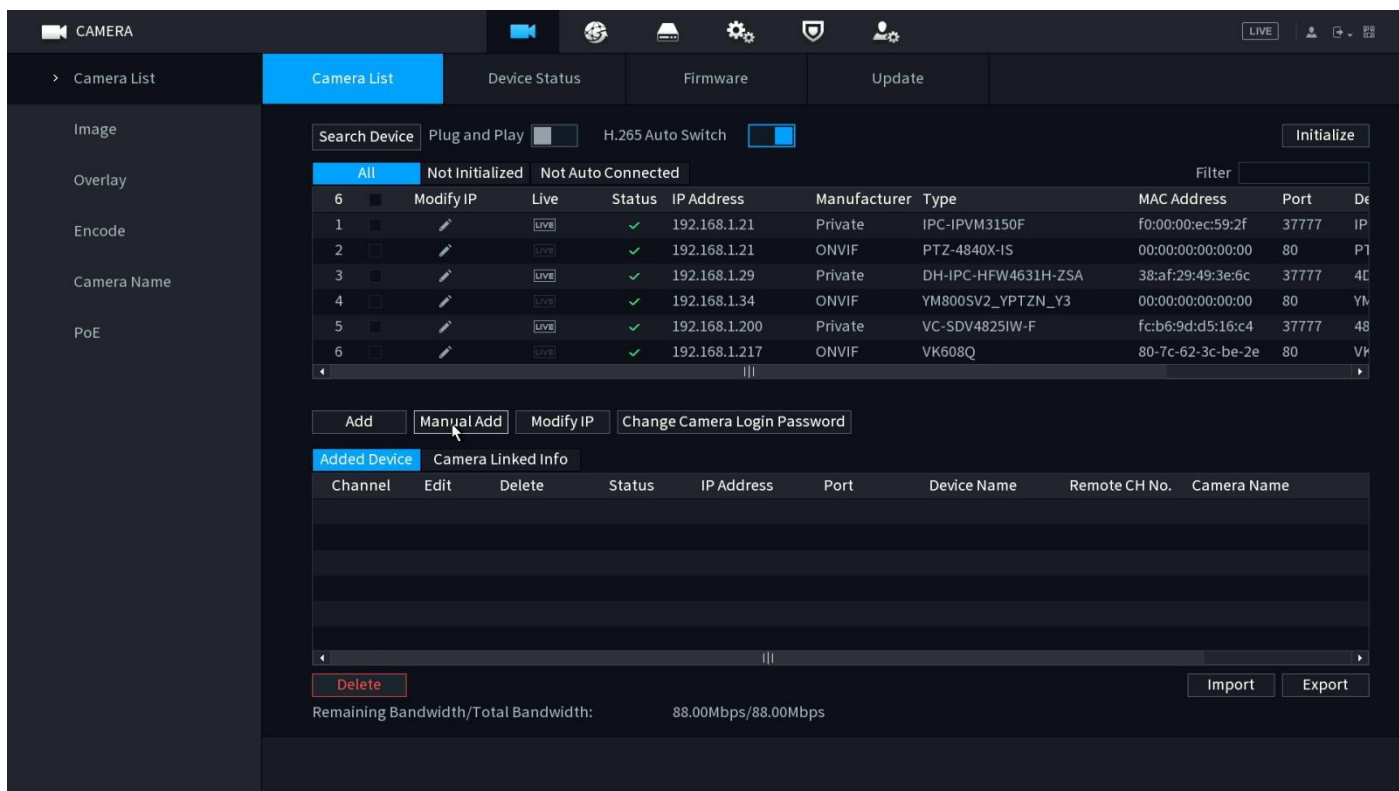


Figure 3-8

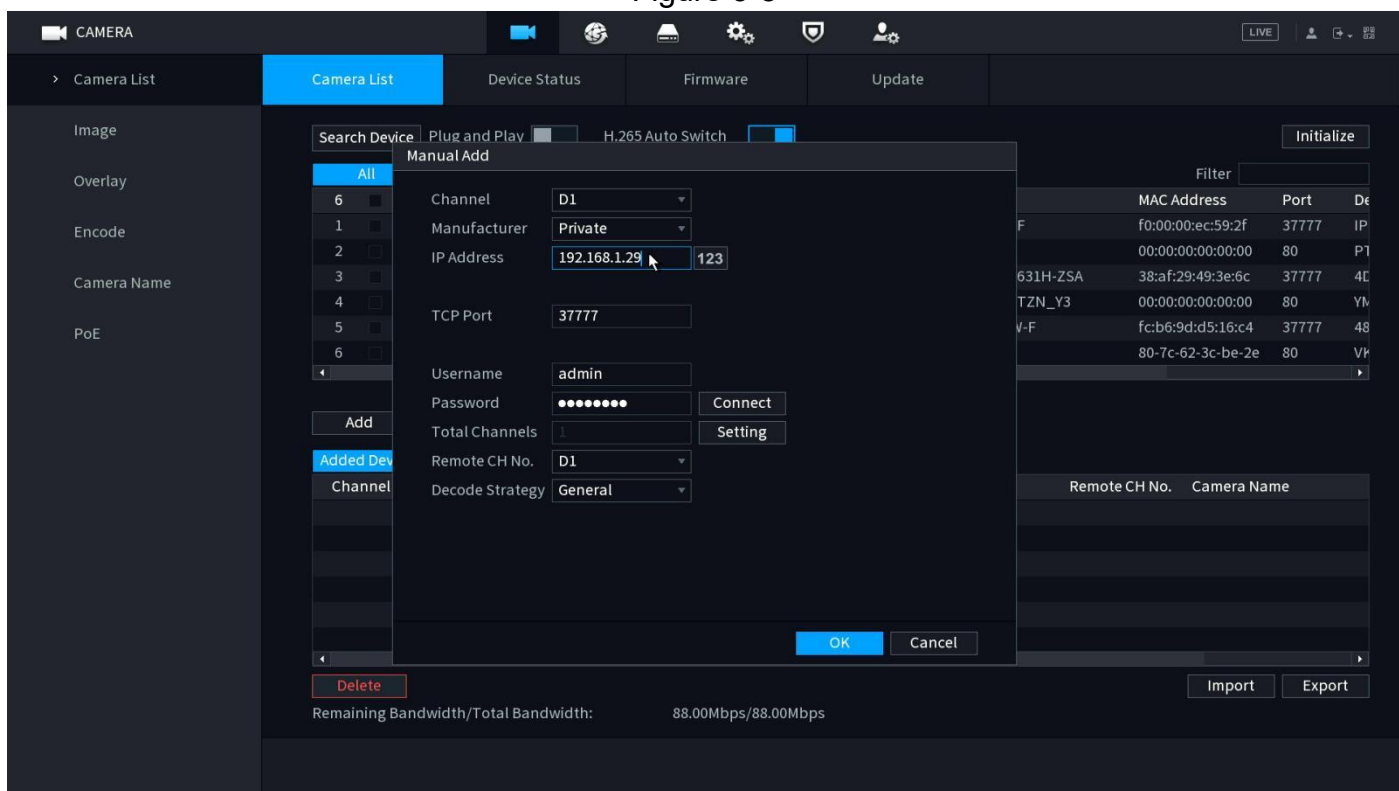


Figure 3-9

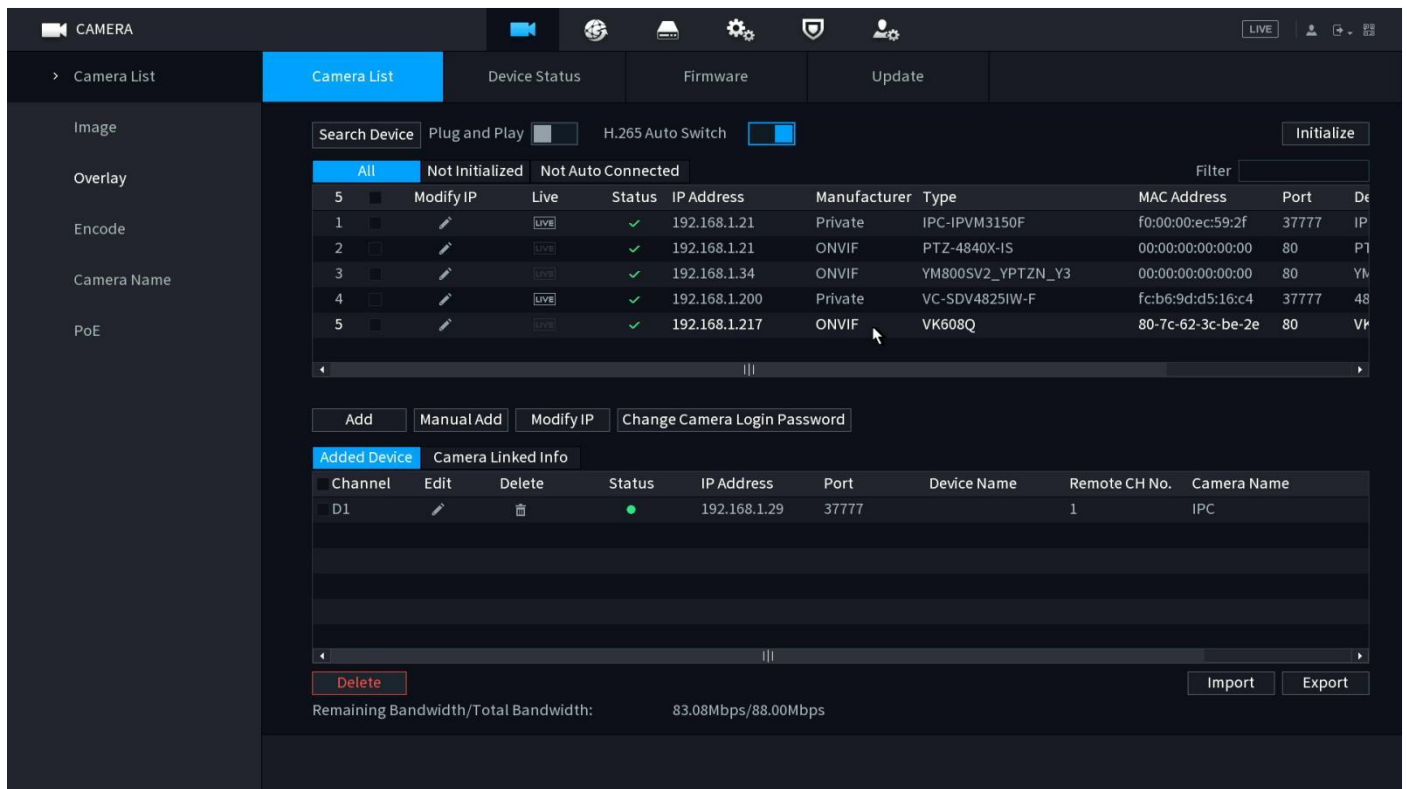


Figure 3-10

You can also login in the IE Web interface of the NVR to add the camera manually. (See Figure 3-11)

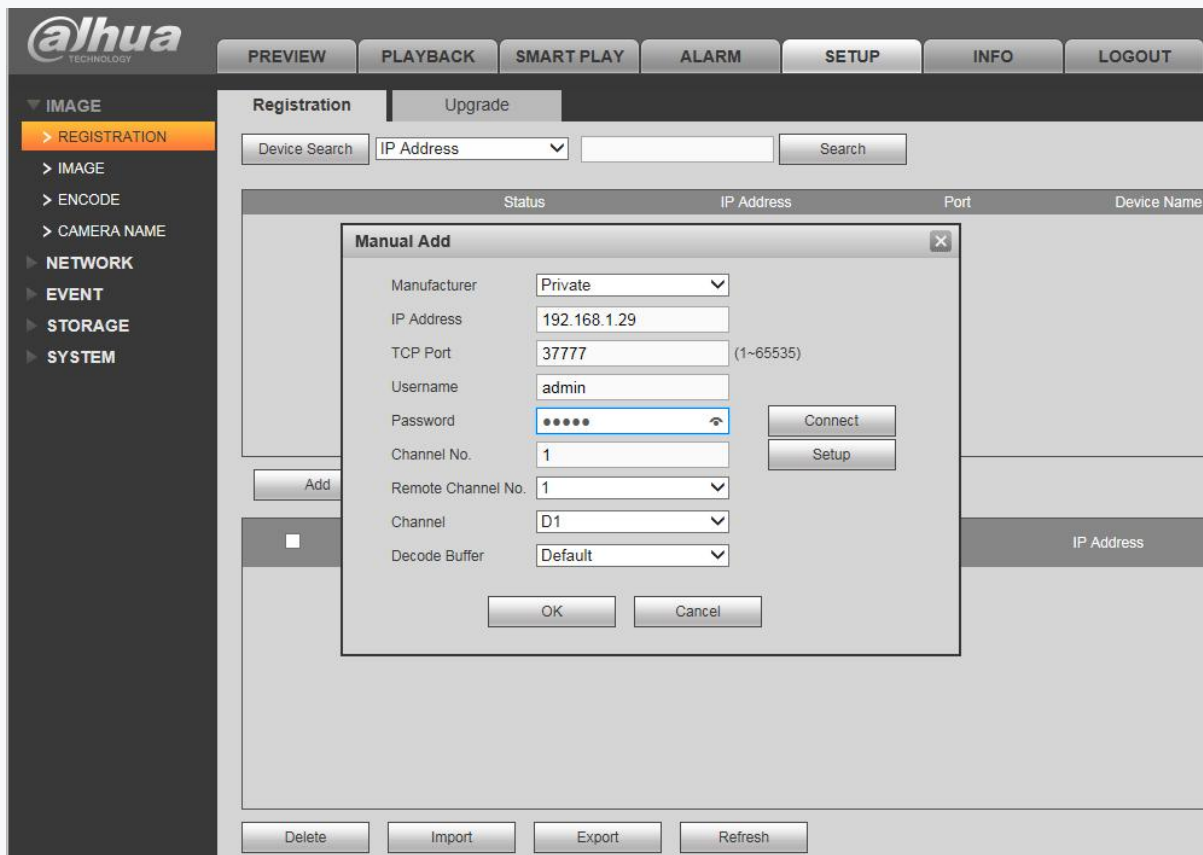


Figure 3-11

< Dahua NVR Web Adding Interface >

3.3 NVR Configuration with ONVIF (Take Hikvision NVR as an example)

3.3.1 Camera connect to Hikvision POE NVR (NVR have POE Ports)

Note: 1. Make sure the POE switch's IP address of the NVR and cameras have valid IP scheme that matches each other

2. Enable the "ONVIF" of the camera and NVR in Web interface.

Step1: Search for the NVR's internal NIC IPv4 address.

Access NVR's UI page > Select "System" > "Network" > "TCP/IP" > "internal NIC IPv4 address". (See Figure 3-12)

Step2: Modify the camera's IP to match the same network segment with NVR. (See Figure 3-14)

Step3: Connect camera to NVR's POE Ports and add camera manually with ONVIF

Access NVR's UI page > Select "camera" > Select the camera's connecting channel number > Click the add button > Select "Manual" for the adding method > Select "ONVIF" > Enter the camera's IP address, user name and password > Select "OK", refresh few seconds, video is showing, adding camera successfully. (See Figure 3-15- Figure 3-17)

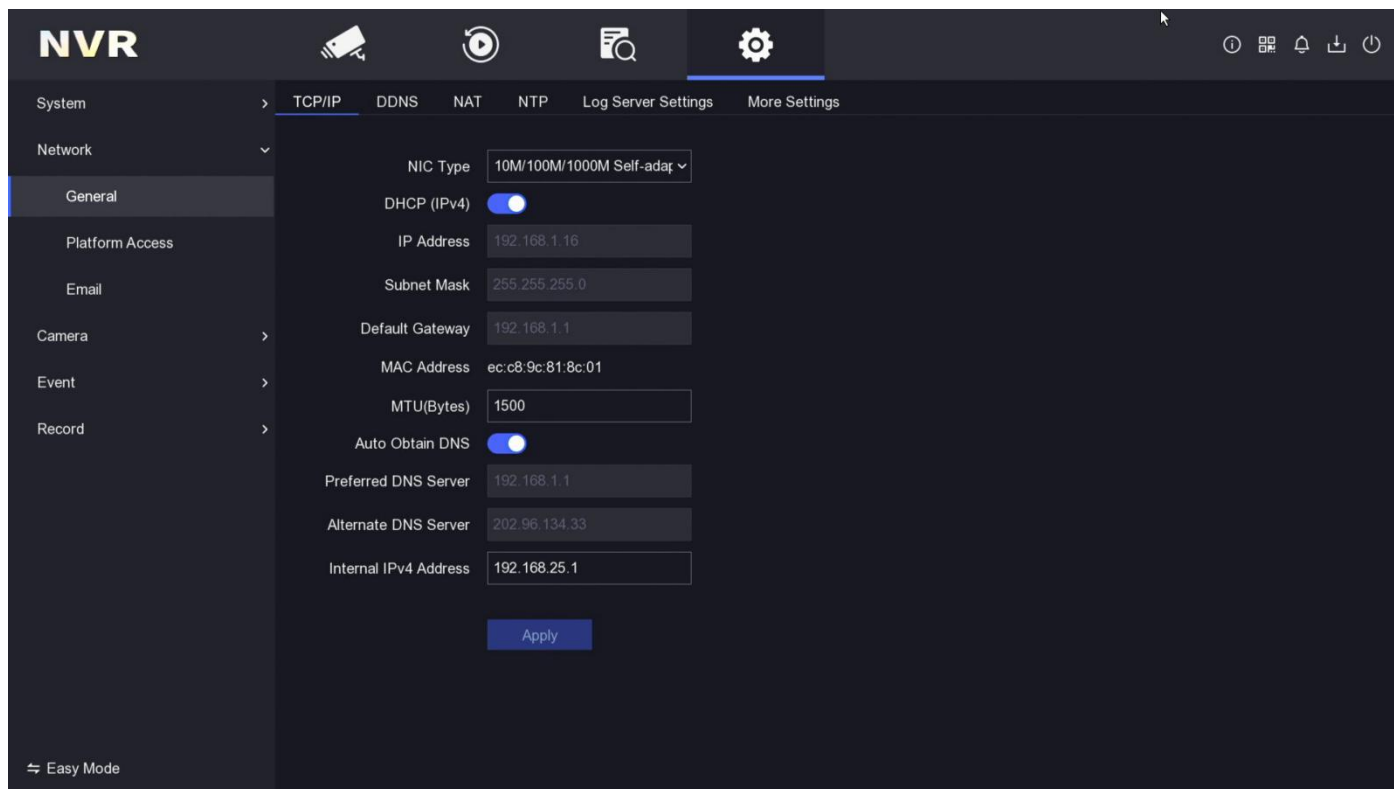


Figure 3-12

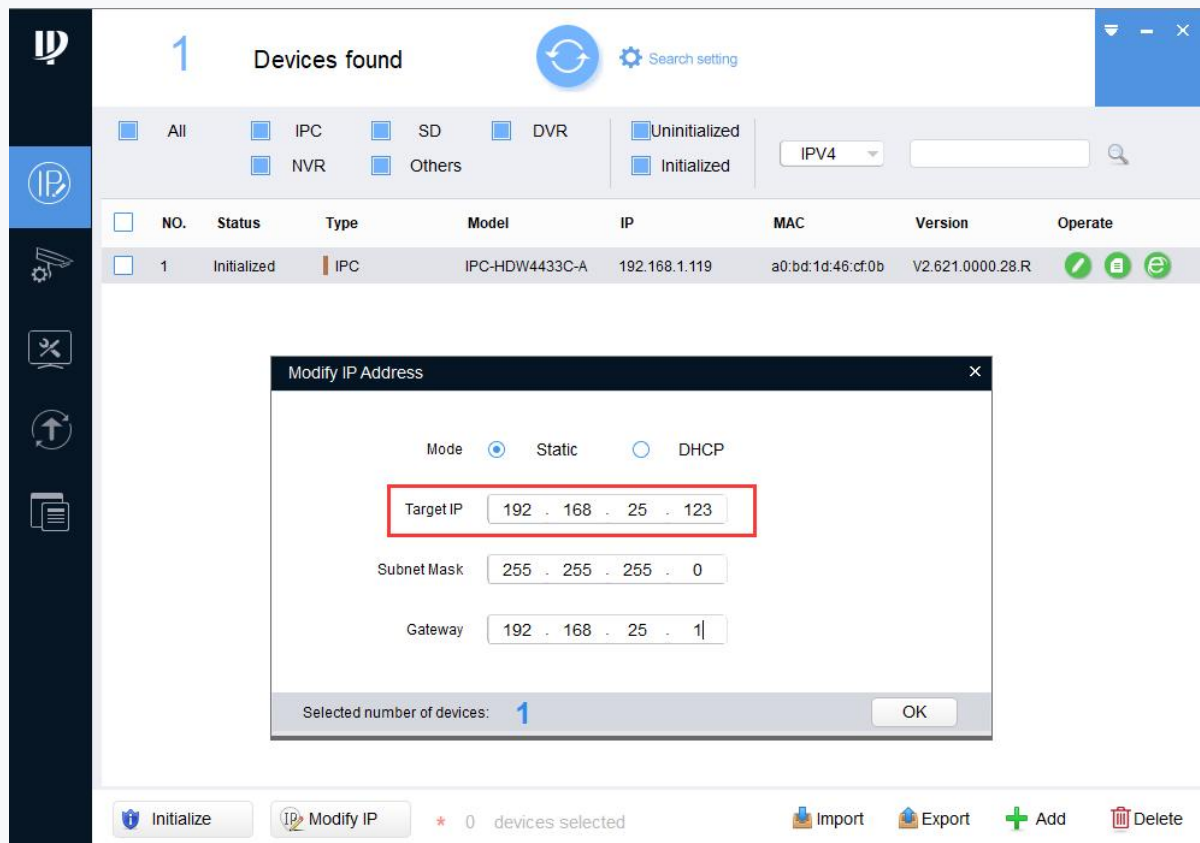


Figure 3-14

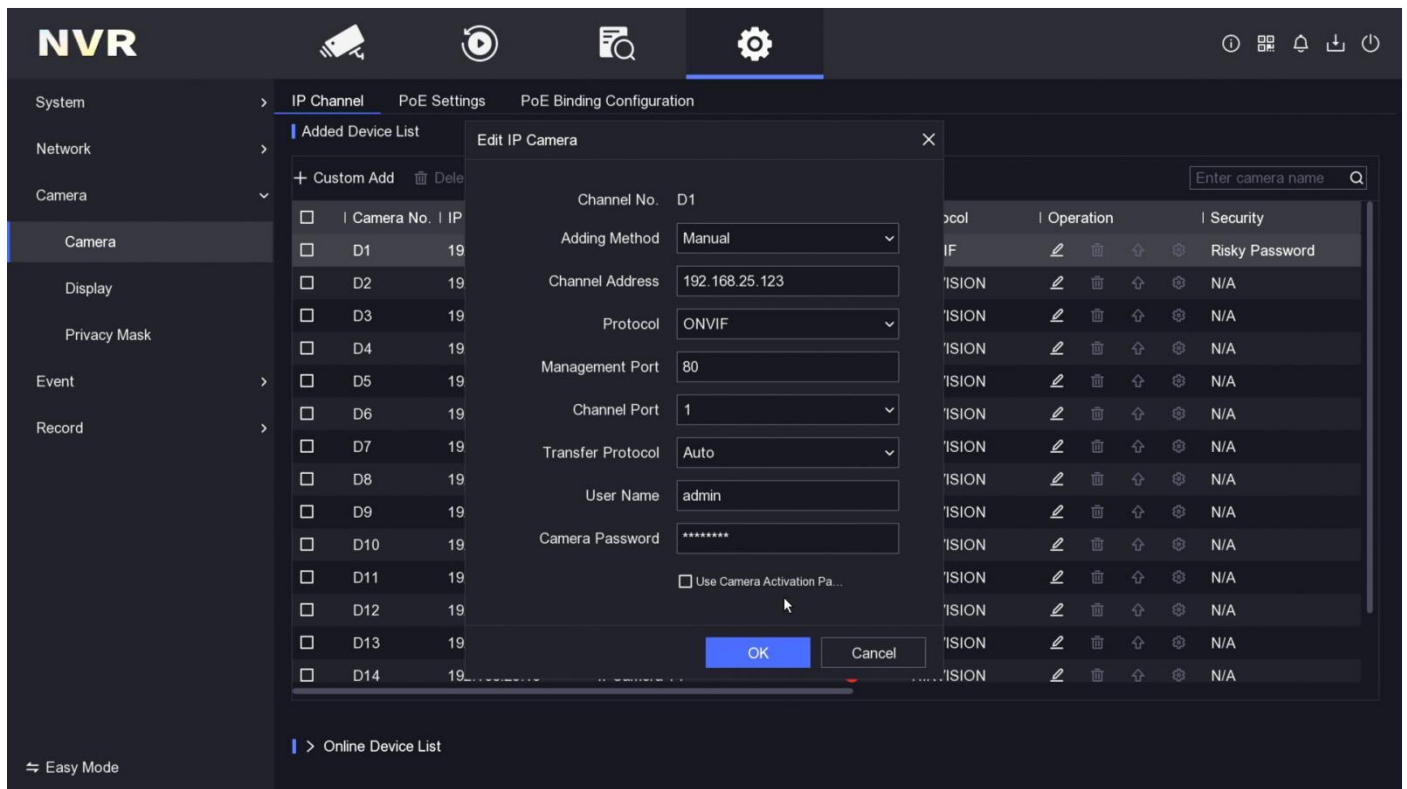


Figure 3-15

Figure 3-16

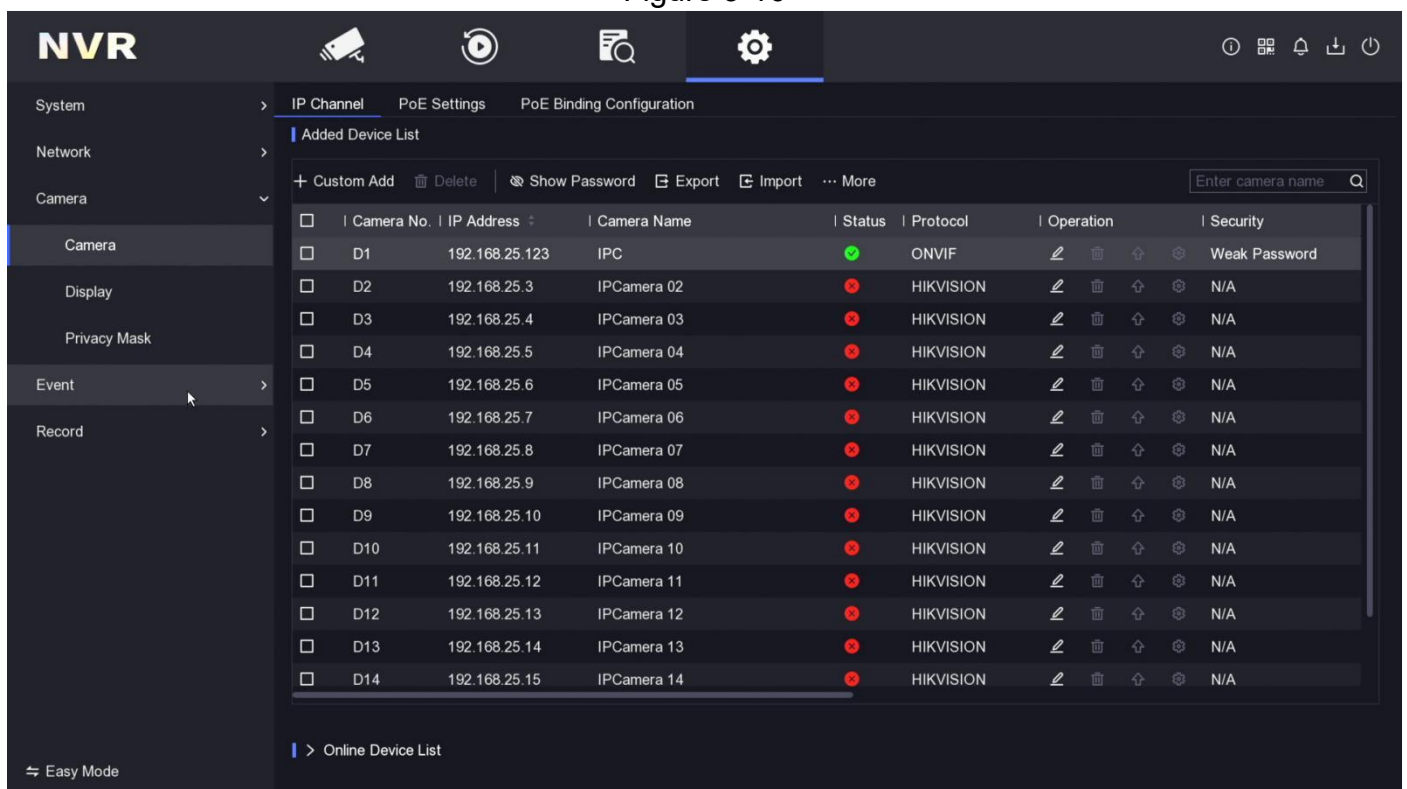


Figure 3-17

You can also login in the IE Web interface of the NVR to add the camera manually. (See Figure 3-18)

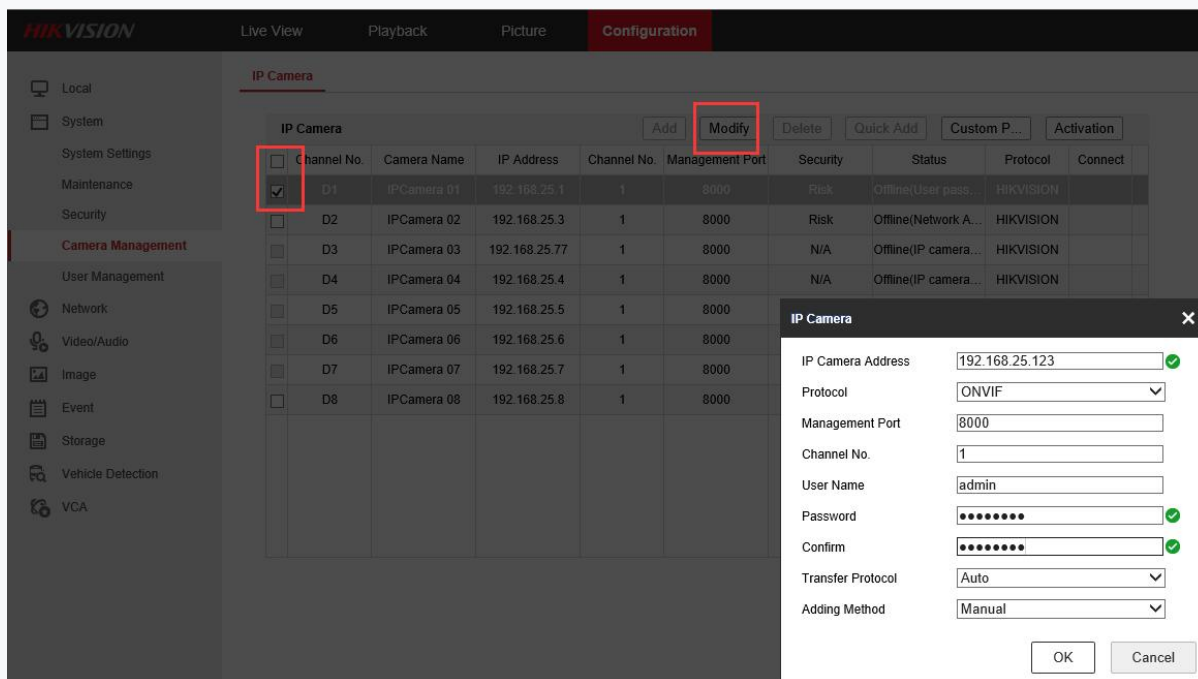


Figure 3-18
<NVR Web Adding Interface>

3.3.2 Camera connect to Hikvision NVR via Router or POE Switch (NVR havn't POE Ports)

Note: 1.Make sure the NVR and cameras 'IP address have valid IP scheme that matchs each other
2.Enable the "ONVIF" of the camera and NVR in Web interface

Step 1:Modify the IP address of camera and NVR to make sure the NVR , cameras and the POE switch router have valid IP scheme that matchs each other.(e.g.: POE switch router's IP is 192.168.1.1, so the camera and NVR's IP must be 192.168.1.XX) . (See Figure 3-19 - Figure 3-20)

Step2: Add camera to NVR manually with ONVIF

Access NVR's UI page > Select "camera" > Select the camera's connecting channel number>Click the add button > Select "Manual" for the adding method > Select "ONVIF" > Enter the camera's IP address,user name and password > Select "OK",refresh few seconds,video is showing,adding camera successfully. (See Figure 3-21 - Figure 3-23)

< Config Tool for modifying Camera's IP >



Figure 3-19

< SADP for modifying NVR's IP >

SADP

Total number of online devices: 2

ID	Device Type	Status	IPv4 Address	Port	Enhanced SDK Service Port	Software Version	IPv4 Gateway	HTTP Port	Device
001	DS-7716N-E4/16P	Active	192.168.1.60	8000	N/A	V3.4.6build 1604...	192.168.1.1	80	DS-7
002	DS-7608NI-I2/8P	Active	192.168.1.105	8000	N/A	V4.1.11build 171...	192.168.1.1	80	DS-7

192.168.1.105

Figure 3-20

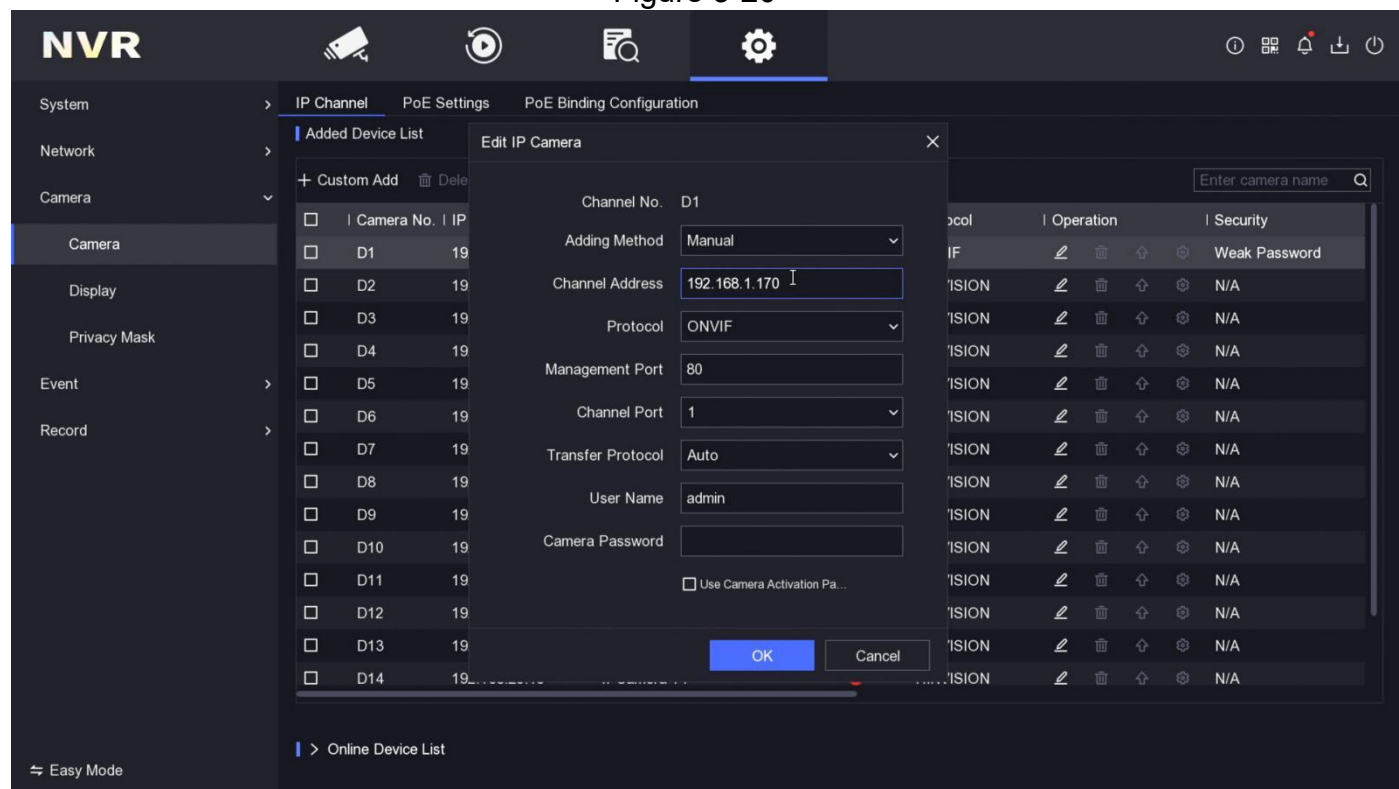


Figure 3-21

Figure 3-22

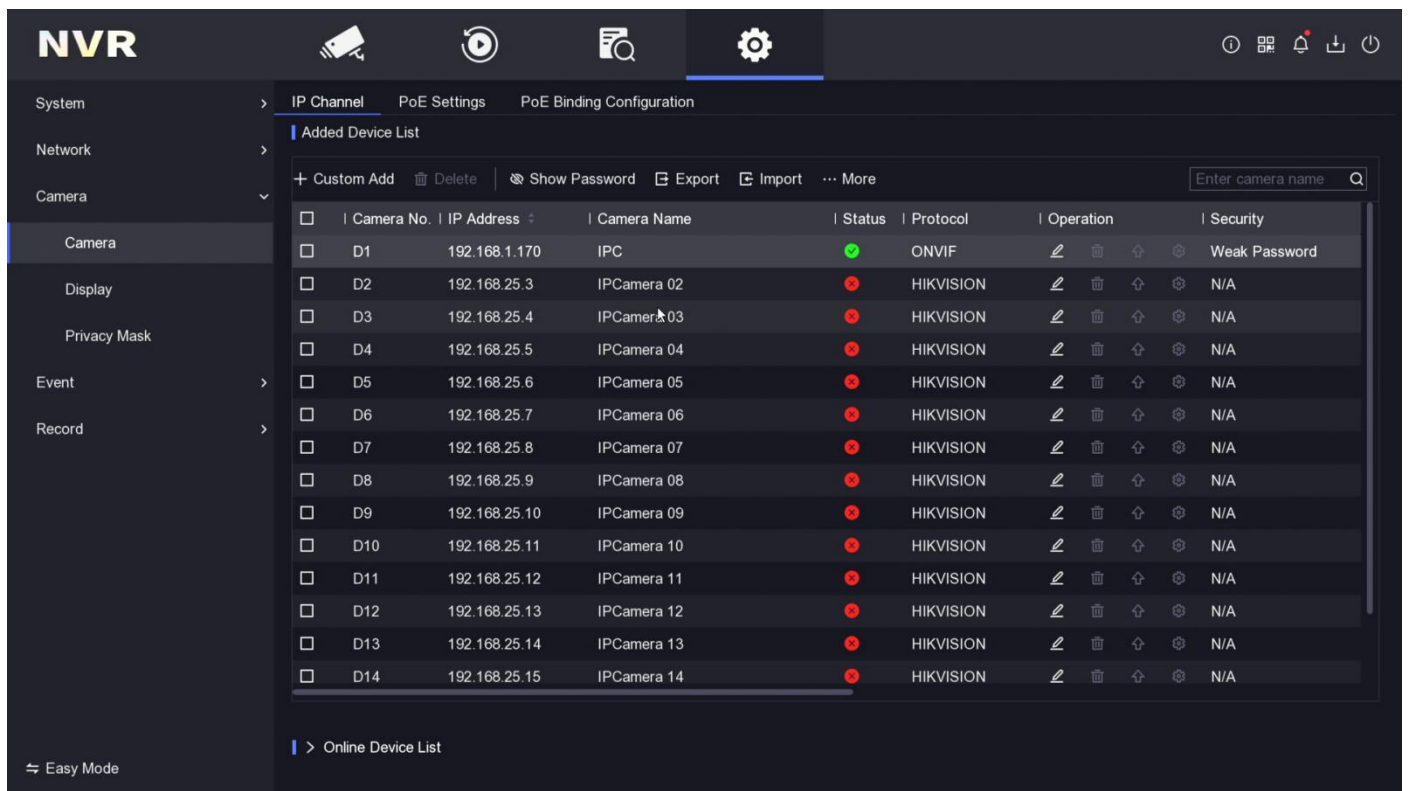


Figure 3-23

You can also login in the IE Web interface of the NVR to add the camera manually (See Figure 3-24)

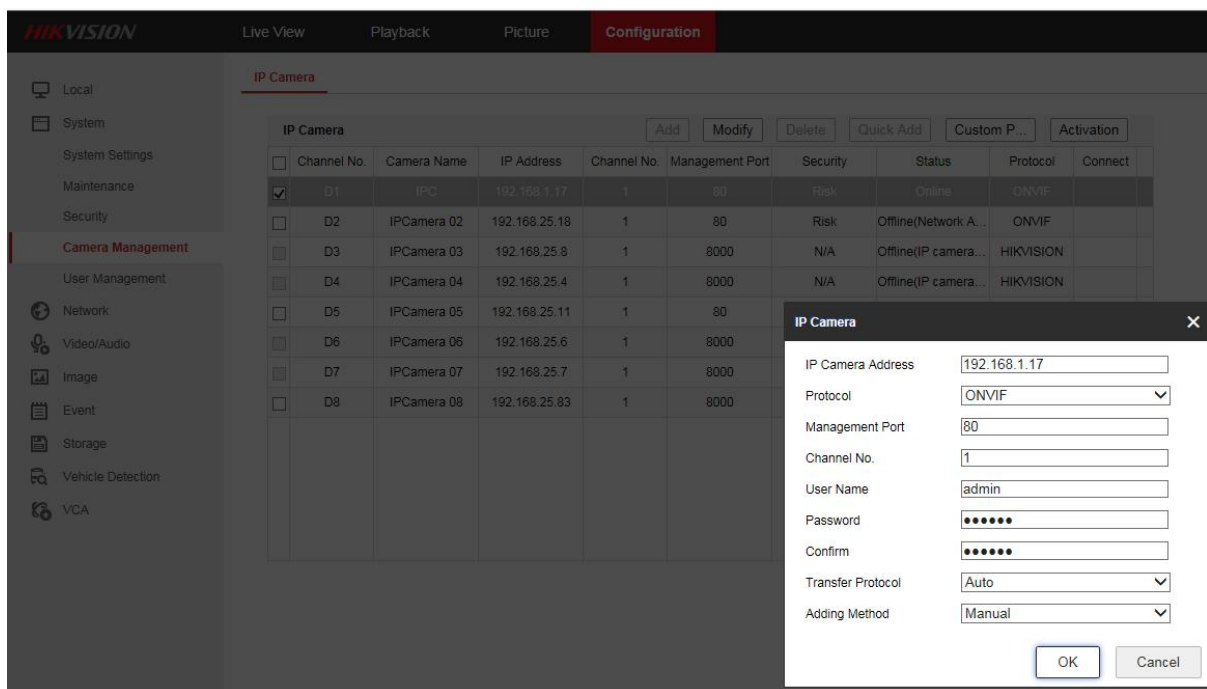


Figure 3-24

< Hikvision NVR Web Adding Interface >

4. Mobile Phone APP

4.1 Download and install APP

You can directly scan the QR code below based on your smartphone system to download app for Android or IOS (**DMSS**), you can also go to the “Google Play” or “App Store” to download and install it.

Mobile Phone APP for IOS:

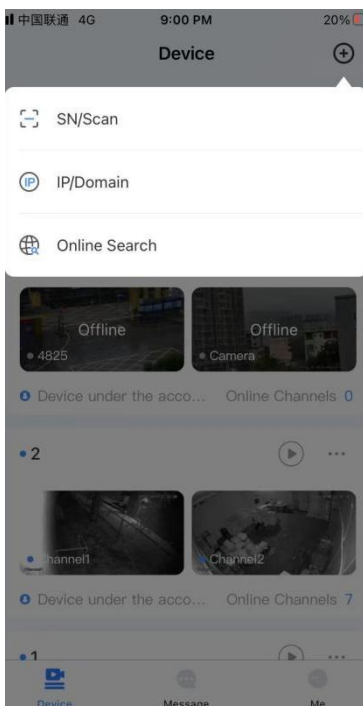


Mobile Phone APP for Android :

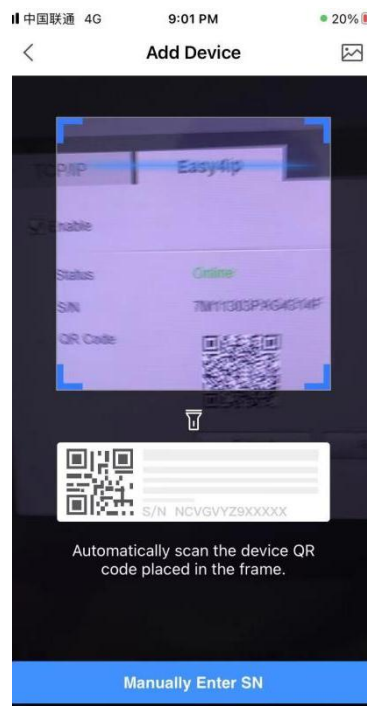


4.2 Add Device

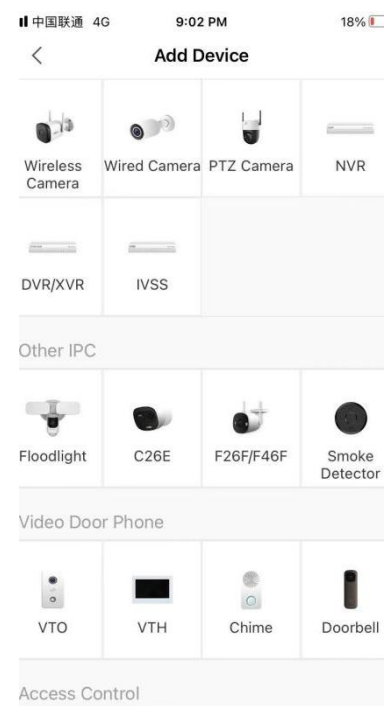
1. Scan the QR code on the p2p of the device, and fill in the device name and device account password according to the prompts.



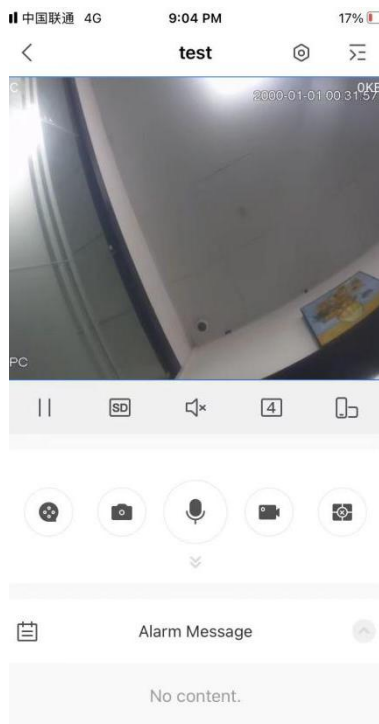
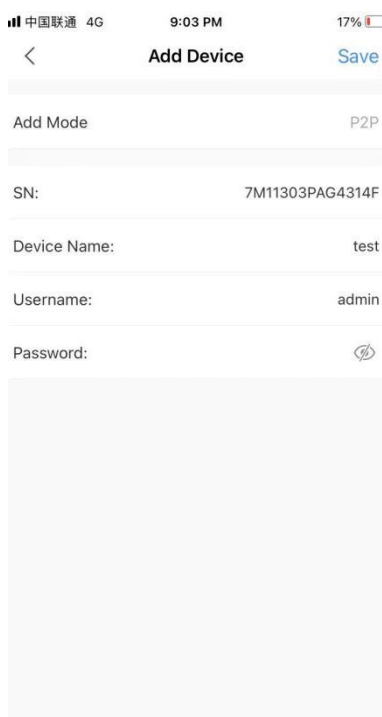
1



2



3



1. Click “+”add device.
2. Scan the QR code of the device or enter the device sequence list.
3. Select device model.
4. Enter device name and password.
5. Real-time preview.

Note: you can use the ConfigTool or login in the IE web pages to find the SN of the camera.

(See Figure 4-10 - Figure 4-11)

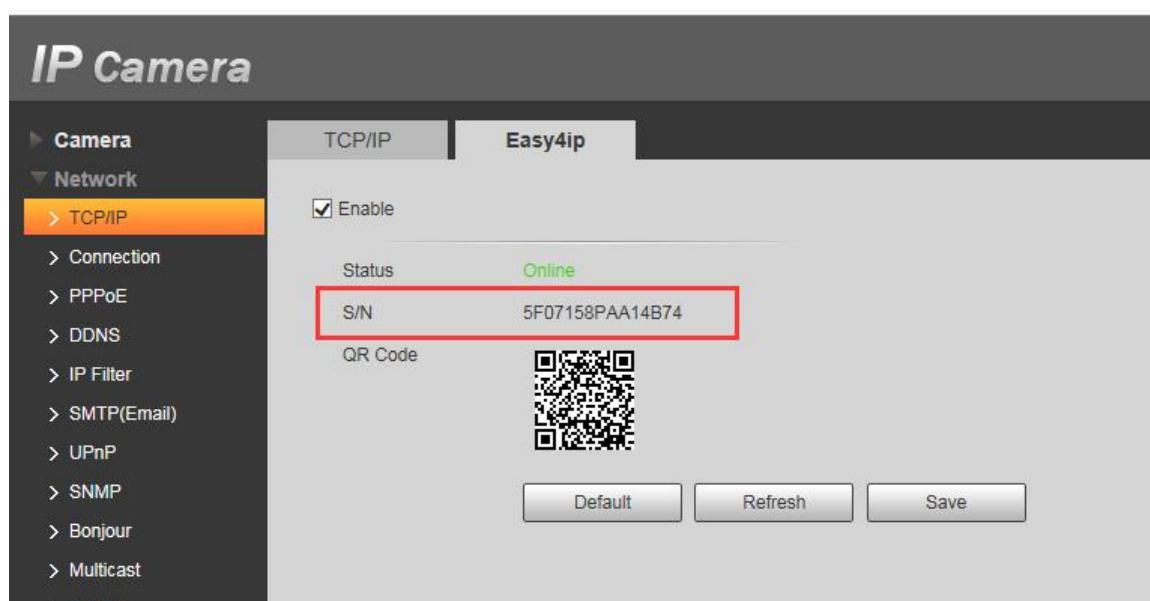


Figure 4-10

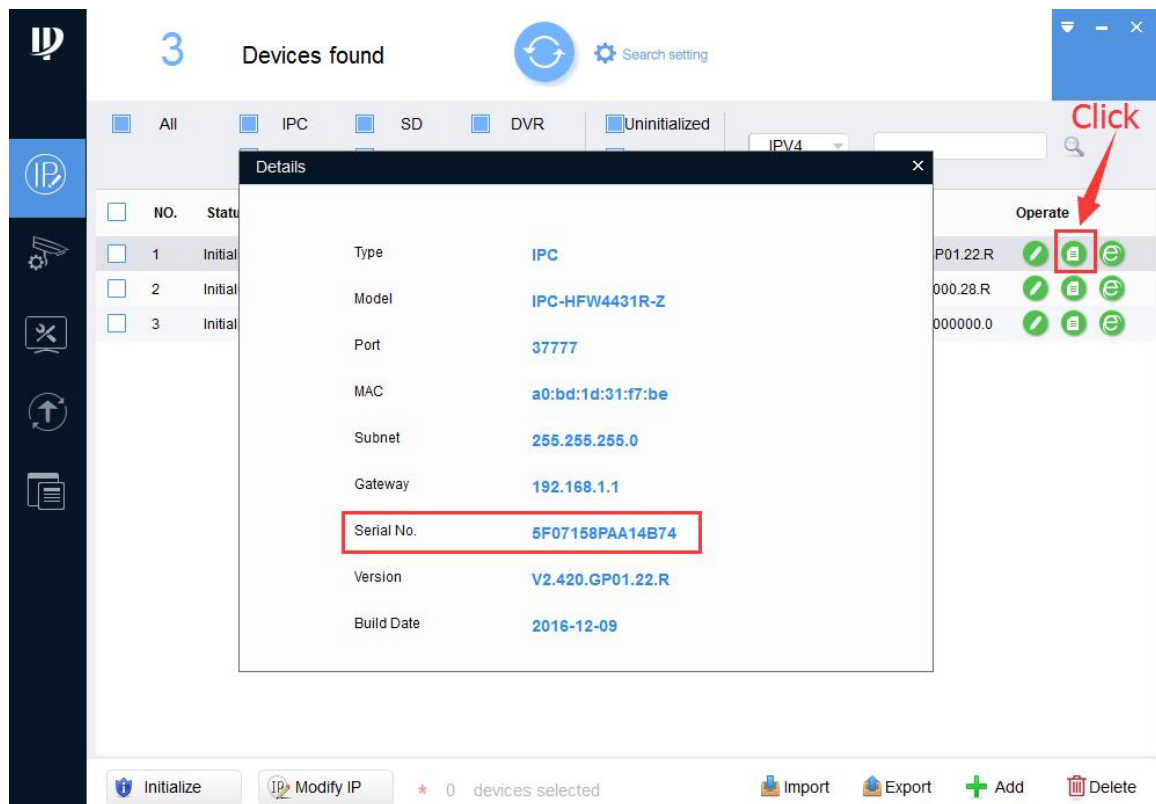


Figure 4-11

Dear Customer

Thank you for your recent purchase of our IP cameras. We hope you will be pleased with both the product and service you received. If not, please give our helpful customer service team an opportunity to improve your experience right away; our team members are more than happy to help.

Meanwhile, we also welcome you to post a Product Review so that others can benefit from your experience. As a growing business, we know how scarce time can be, so we especially appreciate your time and input.

We're always looking for ways to improve, so thanks again for your business, support ,and feedback.

Warm Regards

Customer Tech Support Team