

VD Series POE IP Camera

Quick Start Guide

System Requirement

Operating System
Microsoft Windows XP/7/8/10

Web Browser
For camera that supports plug-in free live view
Google Chrome 45 and later version, Mozilla Firefox 46 and later version, Microsoft Edge, mac os safari. Internet Explorer 8.0 and later version.

Network Connection

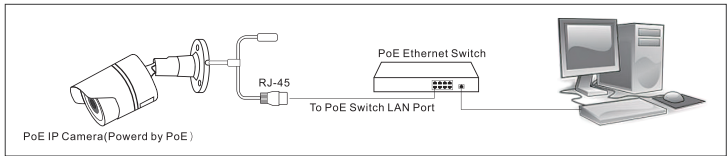
2.1 Setting the Network Camera over the LAN.

To view and configure the camera via a LAN,you need to connect the network camera in the same subnet with your computer,and install the **ConfigTool** or **SmartPSS** Lite software to search and change the IP of the network camera.

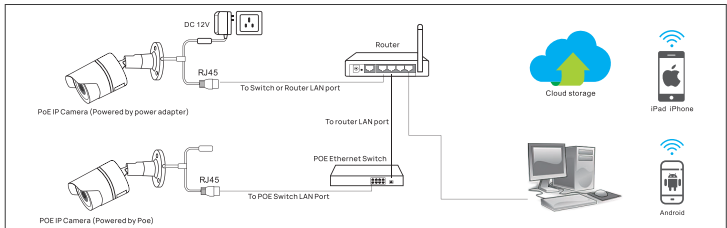
2.2 Wiring over the LAN.

the following figures show the two ways of cable connection of a network camera and a computer.

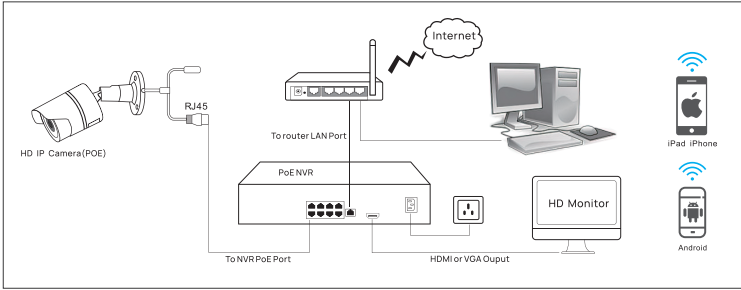
Purpose:
① to test the network camera,you can directly connect the network camera and a computer with a network cable.



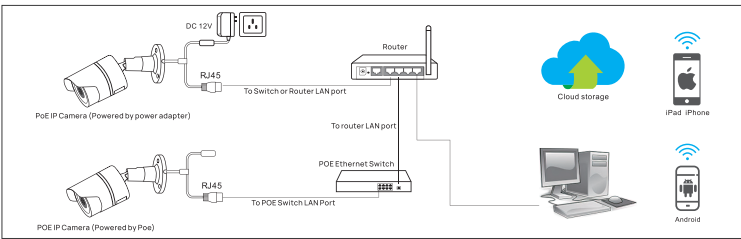
② set network camera over the LAN via a switch or a router.(if it is a POE switch,you do not need to power the camera).



③ connect cameras to NVR



NVR with POE



NVR without POE

Supporting software and download

3.1 ConfigTool (PC software)



The **ConfigTool** can help you to initialize the device, modify the IP, set parameters, upgrade firmware, and so forth.

3.2 DMSS (Android/IOS APP)



The **DMSS** offers a professional remote surveillance management platform to customers with smart phone. **DMSS** can realize device migration with individual accounts, device sharing, and remote monitoring through both live view and video playback. it can receive alarm push notifications anytime and anywhere by internet.

3.3 SmartPSS Lite (PC software)



The **SmartPSS Lite** Client Software is designed to configure and manage devices such as IP cameras, network video recorders (NVRs) with computer. It provides multiple functionalities, including live view, smart search and playback, receiving of multiple events and alarms.

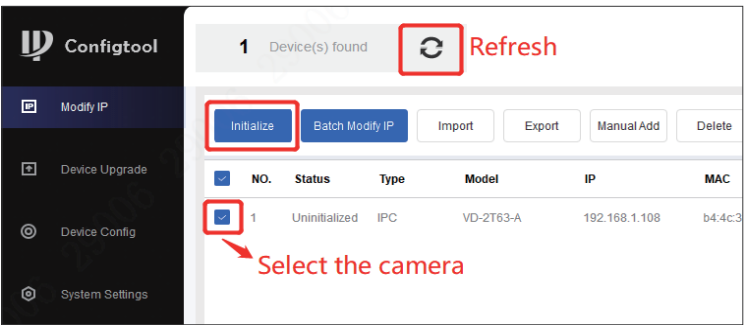
Access to the camera

4.1 Access to the camera by ConfigTool

① Open ConfigTool and click "**Refresh**" to search for the camera.

② Initialize the camera:

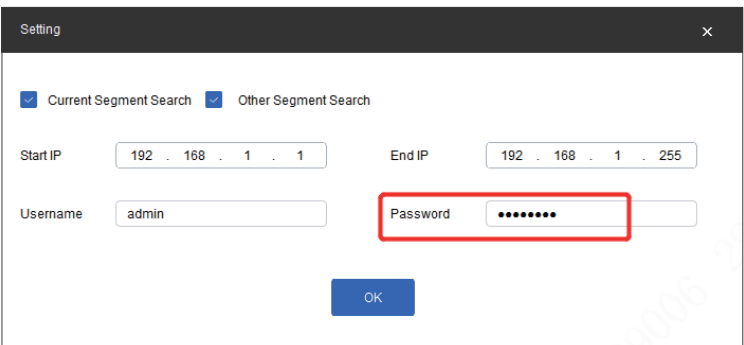
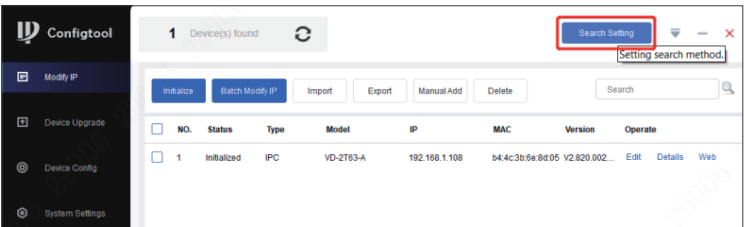
• Step 1: Select the camera, then click "**Initialize**".



• Step 2: Click "**Initialize**".
• Step 3: Set the password. Key in your email address and select P/N for the video format. Then click "**Next**"-->Then click "**OK**"-->Click **Finish**..

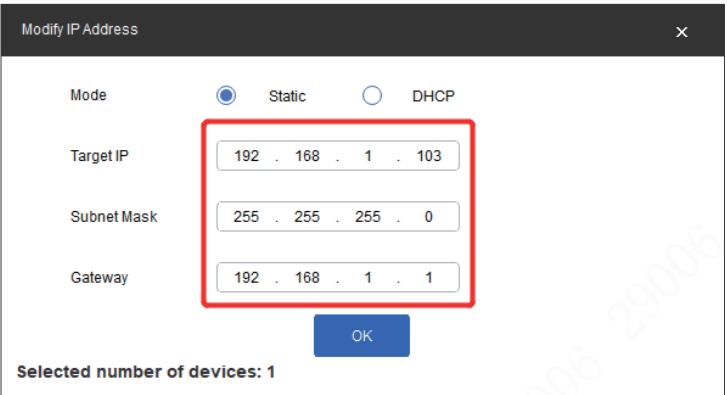
③ Modify the IP address of camera

• Step 1: Click"**Search setting**", key in password of the camera, and then click "**OK**".

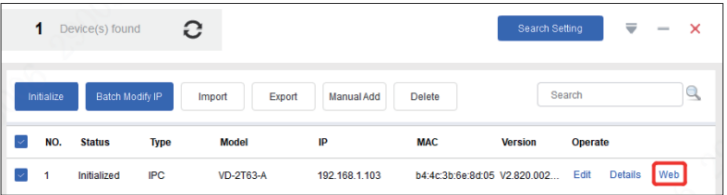


• Step 2: Select the camera, click "**edit**".

• Step 3: Key in Target IP, Subnet Mask and Gateway to make sure the **IP** address of the camera is in the same network segment with your PC. Then click "**OK**". then click "**Refresh**", the IP address will update.



④ Visit the camera by web browser: Select the camera, click "**web**", then you can visit the camera through **web** browser.



4.2 Access to the camera by Web Browsers

① Finish network connection refer to 2.2.

② you need to make sure the **IP** address of your PC is in the same network segment with the camera.

③ Initialize the camera.

• Step 1: Key in the IP address of the camera **192.168.1.108** in the Address Bar of the browser, and then press "**Enter**", you will find a page as below:

• Step 2: Finish Country/Region setting according the using region of the camera.

• Step 3: Finish "Time Zone Setting" as your requirement.

• Step 4: Finish Device Initialization. Set the password of the camera-Key in your email address.

• Step 5: Select or disselect **P2P** function and "**Auto-check for updates**",The initialization is finished.

④ Please refer to chapter 2.2 for network connection operation. Key in user name and Password in the login page, then click "**login**", you will access to the camera.it may prompt you to install the Plug-in. Please operate as the tips. then close all browsers and re-install the Plug-in.

4.3 Access to the camera by DMSS

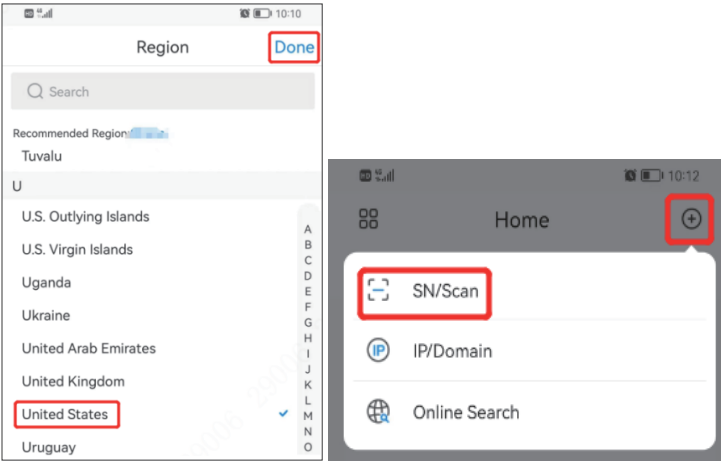
① Finish network connection refer to 2.2. Finish router setting and make sure your camera can access to the Internet.

② Finish "**Device initialization**" refer to 4.1. Then visit the camera in the web, **Setting** → **Network** → **Access Platform**, enable **P2P** function. It is **OK** when you found the status of P2P is "**Online**".

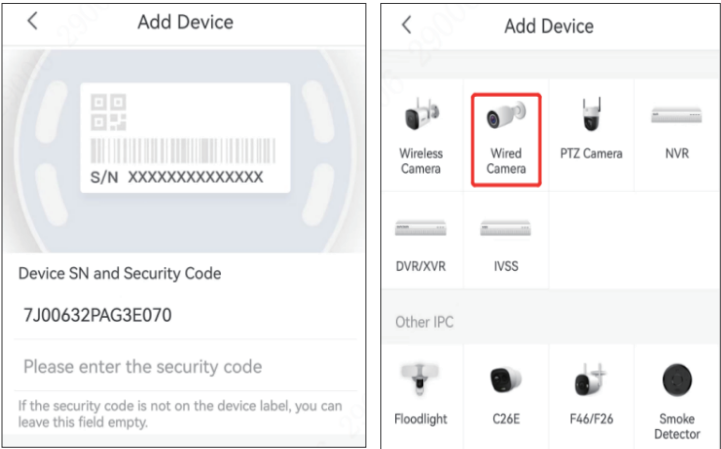
③ Install DMSS and add the camera.

• Step 1: Download and install **DMSS** into your smart phone.

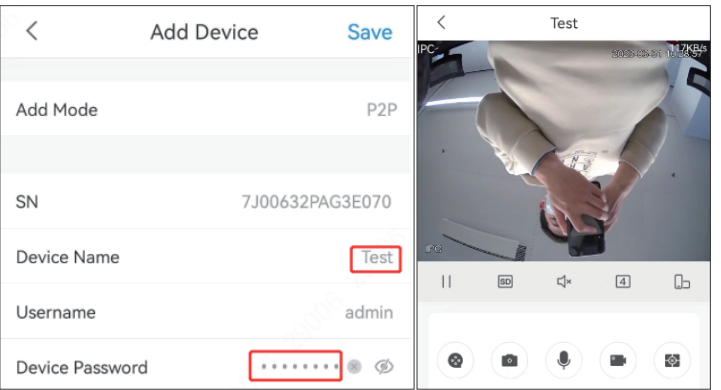
• Step 2: Select the Region, then click "**Done**".



- Step 3: Go into the home page, click the ⊕ icon, then select **SN/Scan**, scan the QR code of camera label or in the **P2P** page of the web, then click **Next**.



- Step 4: Select the correct type of camera, then key in **"Device Name"** and **"Device Password"**, click **"Save"**. Click **"Done"**, and you will see the video in **DMSS**.



4.4 Access to the camera by SmartPSS Lite

- ① Finish network connection refer to 2.2.
- ② Software installation: Download and install SmartPSS Lite into your PC.
- ③ Search the device.

- Step 1: Open SmartPSS Lite, and click **"Device Manager"**→Step 2: Click **"Auto Search"**, please modify the **"Device Segment"** to **192.168.1.1 - 192.168.1.255**, and click **"Search"**.

- ④ Intialize the camera.

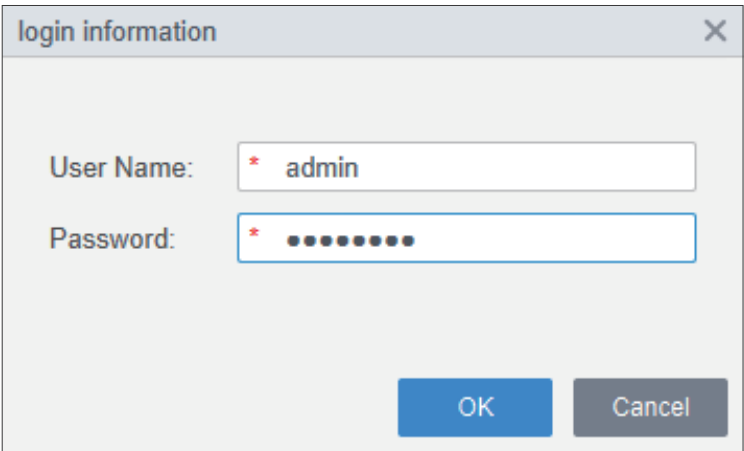
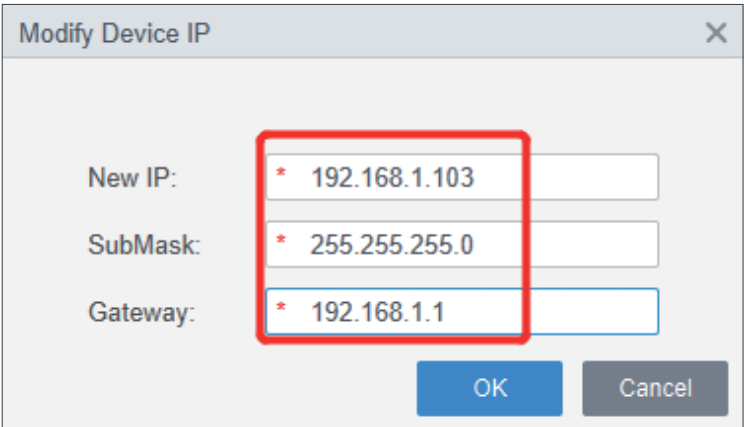
- Step 1: Select the camera, click **"Initialization"**→ Set the password of the camera Then click **"Next"**→ Key in your Email Address → Key in IP address, Subnet Mask, Gateway of the camera. Initialization Completed.

- ⑤ Modify the **IP** of the camera and add the camera.

- Step 1: To modify the IP of the camera, you need to make sure the IP address of your PC is in the same network segment with the camera. Please refer to VI of 4.1 to finish the settings.

- Step 2: Select the camera, and click **"Modify IP"**.

- Step 3: Key in the target **IP address, Subnet Mask, Gateway of the camera**, then click **OK**.next key in the **User Name** and **Password** click **"OK"**. After several seconds, the **IP** address of the camera will update automatically.



- Step 4: Select the camera, then click **"Add"**. key in the User Name and Password of the camera once again.the camera appear in the page of Device Manager.

- Step 5: In the page, you can see the online status of the camera, and you can modify the name of **IP camera** after clicking **"edit"** and visit the web browser of the camera after click **"Go to device config"**.

- ⑥ Live View function introduction

- Step 1: Click Home → Monitor Solution → Live View

- ⑦ The Playback function introduction

- Step 1: Click Home → Monitor Solution → Playback

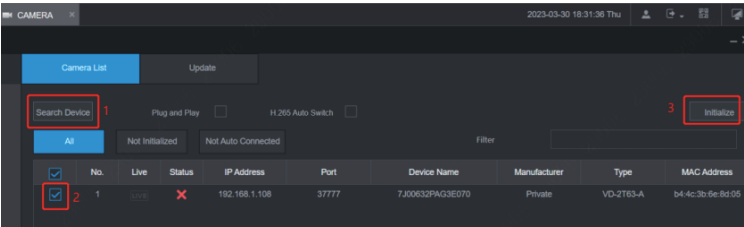
4.5 Access to the camera by NVR

- ① Connect the camera to the dahua NVR by PoE port Finish the camera connection, refer to 2.2 if camera not Initialization , the camera image will display automatically. if not work , need manual add follow 2 step 2.

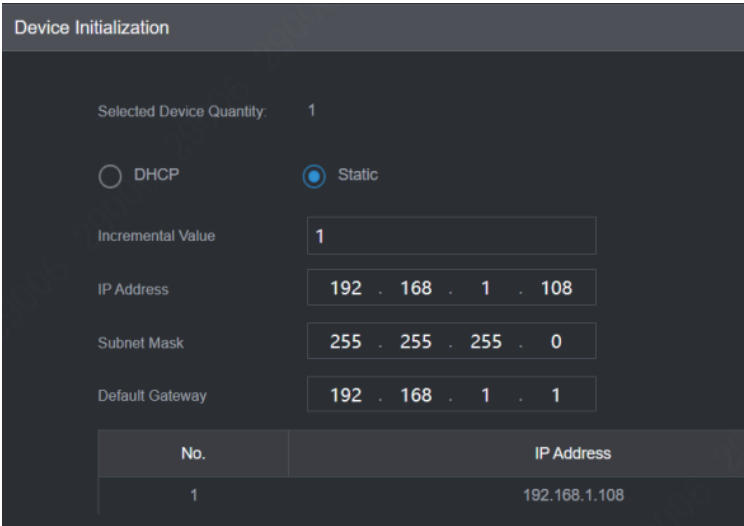
- ② Connect the camera to the NVR without PoE port or manual add camera.

- Step 1: Finish the camera connection, refer to 2.2

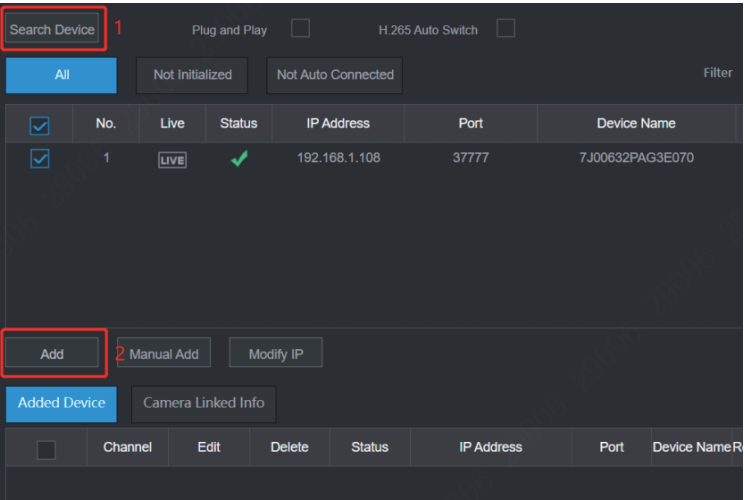
- Step 2: Login into the NVR, go to the camera setting page. Click **"Search Device"** to look for the camera, then select it, click **"Initialize"**.



- Step 3: Check **"Use local password and email"**, then the camera will use the same password and email settings as the **NVR**; Click **"Next"**. Set the **IP address** of the camera as what you want. the IP address of your camera should is in the same network segment with the **NVR**. Click **"Next"**, click **"OK"** to finish the initialization.



- Step 4: Click **"Search Device"** to refresh the page. Select the camera, then click **"Add"**. After several seconds, you will see the video of camera in the Live page.



Frequently Asked Questions

5.1 Why can't I open the default IP address 192.168.1.108 via web browser?

The default IP address of camera maybe in the different network segment with your PC. Please check the IP address of your PC before accessing the camera.modify the IP of camera address of the camera. For detailed instruction, please refer to **V** and **VI** of 4.1.

5.2 Why can't the ConfigTool find the IP camera?

- ① Please check the settings of ConfigTool, click **"Search Setting"**, then check if both **"Current Segment Search"** and **"Other Segment Search"** have been selected, and **"Start IP"** and **"End IP"** should be **"192.168.1.1"** and **"192.168.1.255"**.

- ② If the settings is ok, please modify the **IP address** of your **PC** to **192.168.1.x**, then search it again.

For detailed instruction, please refer to **V** and **VI** of 4.1.

5.3 Why can't DMSS connect to the IP camera?

P2P function didn't active successfully. Make sure that you have finish all network settings about the router and **PC** so that your **IP camera** can access to Internet. And make sure that you have finish camera initialization and the status of P2P is **"Online"**.

For detailed instruction, please refer to 4.3.

5.4 Why does the NVR not show image after adding your IP camera?

- ① Make sure you selected the right protocol and key in the correct username and password when adding the camera.

- ② Make sure the IP address of **NVR** and the **IP camera** are in the same network segment,Change the video encode mode of the IP camera to **H.264** if the **NVR** doesn't support **H.265**. (Setting → CAMERA → Encode → Audio/Video: select the correct channel, Main stream → Compression: H.264).

5.5 I forgot the camera password.

- ① If you have registered your email address during camera initialization, please click **"Forgot password?"** in the login page of camera, then click **"ok"** to allow the reset process collect your email and device information. If you have added this camera to **DMSS**? Please open **DMSS**, Me → Tool Manager → Device Password Management, use DMSS to scan the QR code in the web page, and fill in the Security code received in your email, after clicking **"Next"**, you can reset the password. If you didn't use DMSS before, please use other APP to scan the QR code to get encryption strings, then copy these encryption strings to a new mail and send to support_gpwd@htmicrochip.com with the email address registered. Please fill in the Security code received in the web page, after clicking **"Next"**, you can reset the password.

- ② If you didn't fill in the email address during camera initialization, please open ConfigTool. Go to **"Password Reset"**, click **"Reset"**, then click **"Agree"** to confirm the reset process collect your information, then click **"OK"** to confirm to use xml to reset the password. Click **"ok"** again to export the reset file of **ExportFile.xml**, send it to the technical support of seller. Then he will send you a new XML file. Import this new XML file in the **"Password Reset"**, then you can reset the password the camera.